

STG-1 SUCTION SCRUBBER

MAWP: 655 PSIG @ 300°F
MDMT: -20°F @ 655PSIG
12.75" OD X 40" SS

V-210

MAWP: 655 PSIG @ 300°F
MDMT: -20°F @ 655PSIG
1" NPT X 40" SS

G-120

ARIEL CYLINDER 2-3/4M
4.75" BORE
H.E.V.C.P.

G-220

ARIEL CYLINDER 2-3/4M
2.5" BORE
H.E.V.C.P.

G-730

COMPRESSOR FRAME
ARIEL COMPRESSOR FRAME JGA/2
600-1185 RPM, BALANCED OPPOSED

M1

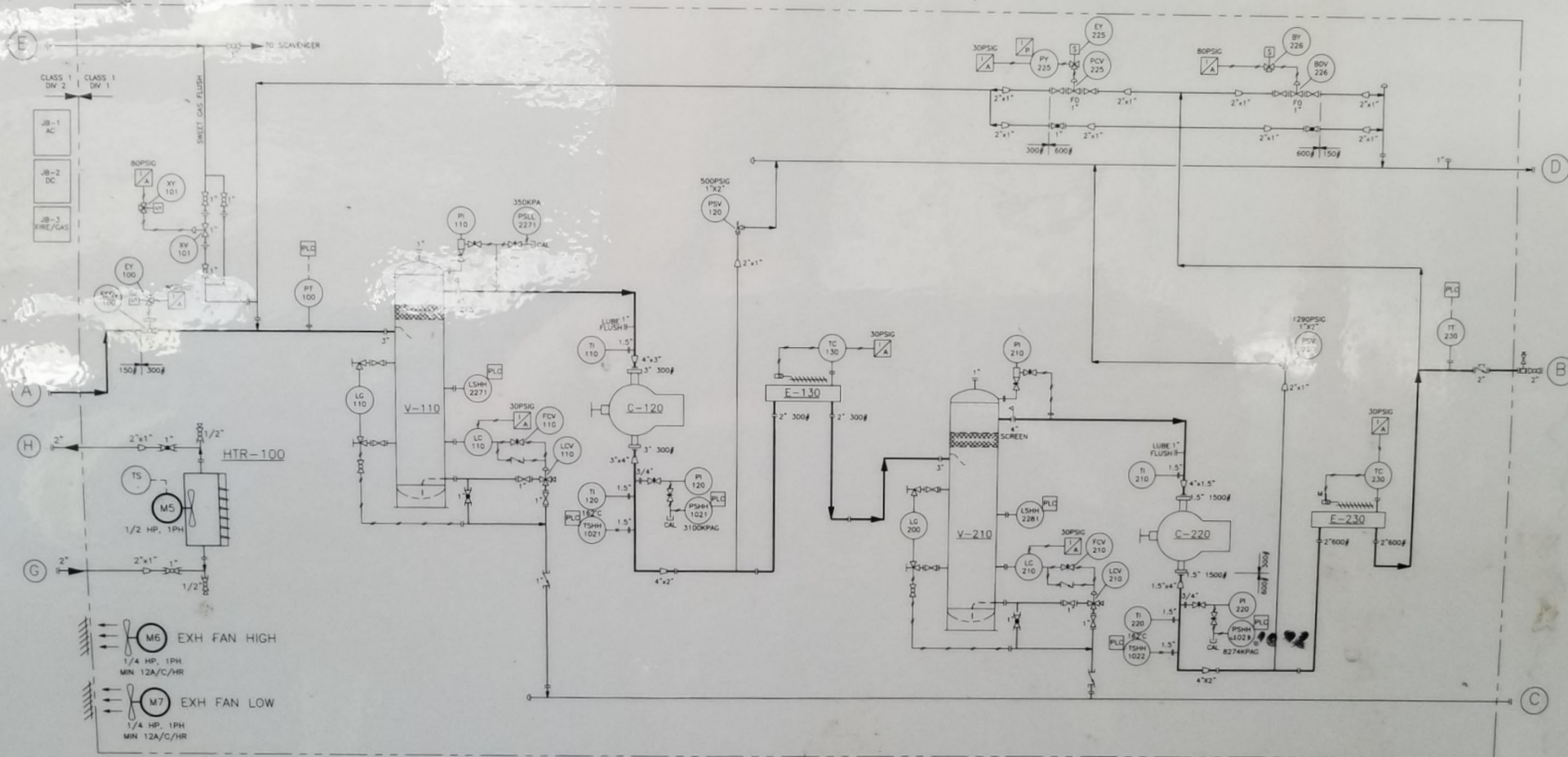
COMPRESSOR MOTOR
BALDOR MOTOR
75HP, 1185RPM 40ST
460 VAC, 3PH EXP, INVERTER DUTY

E-130/230

GLYCOL AFTER COOLER
FIN-X-LTD
SST TUBES

HTR-100

GLYCOL HEATER
RUFFNECK
HP-5-20 GLYCOL



REF	FUNCTION	SIZE RATING	PROJ	REF	FUNCTION	SIZE RATING	PROJ	SCALE	Vapor-Tech Systems Edmonton	
A	GAS INLET	3" 150 RFWN FLANGE	B"	H	HEAT GLYCOL OUT	2" 300 RFWN FLANGE	B"	NTS		
B	FINAL DISCHARGE	2" 600 RFWN FLANGE	BROWN	I	LP FLARE	2" 150 RFWN FLANGE	B"		2-STG RECYCLE COMPRESSOR BURLINGTON RESOURCES GREGG LAKE	
C	CONDENSATE DRAIN	2" 300 RFWN FLANGE	B"	Z	SKID DRAIN	2" NPTM PIPE	2"			
D	RELIEF HEADER	2" 150 RFWN FLANGE	B"						P&ID PROCESS FLOWSHEET	
E	FUEL GAS	1" NPT UNION	B"							
F	INSTRUMENT AIR	1/2" NPT UNION	B"						100-1429	
G	HEAT GLYCOL IN	2" 300 RFWN FLANGE	B"							
REVISIONS								SCALE	REV DATE	
0	AS BUILT			BW	11/26/01	KJE	CHECKED			
1	REVISED			BW	09/25/01	KJE	CHECKED			
A	FIRST ISSUE			BW	08/29/01	KJE	CHECKED			
REV. NO.	DESCRIPTION			BY	DATE	CHECKED	CAD FILE			