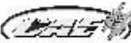
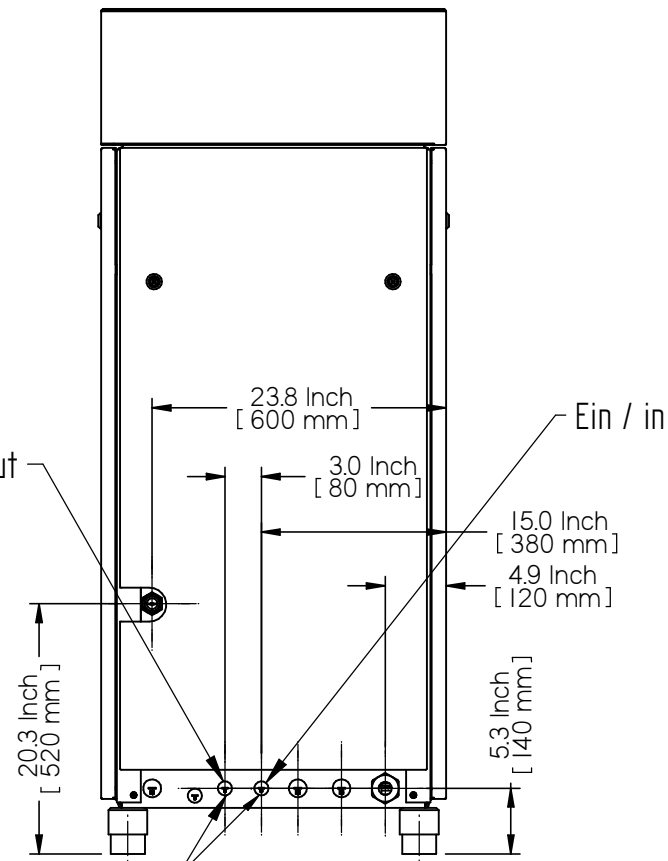
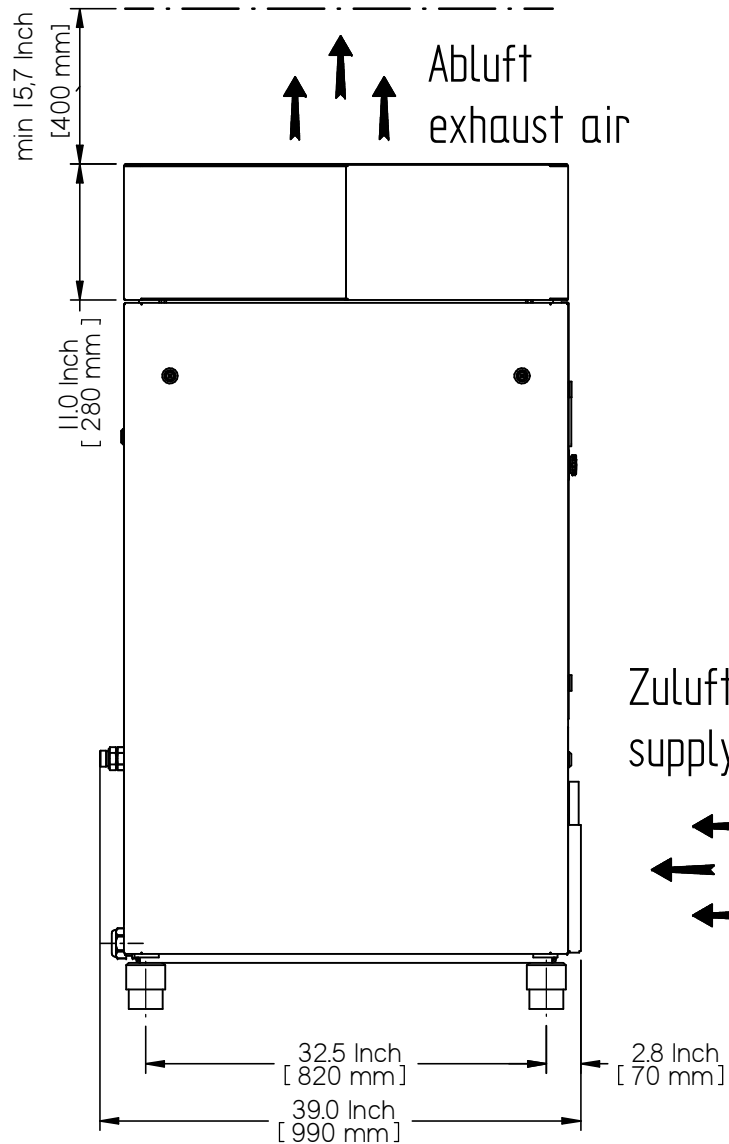
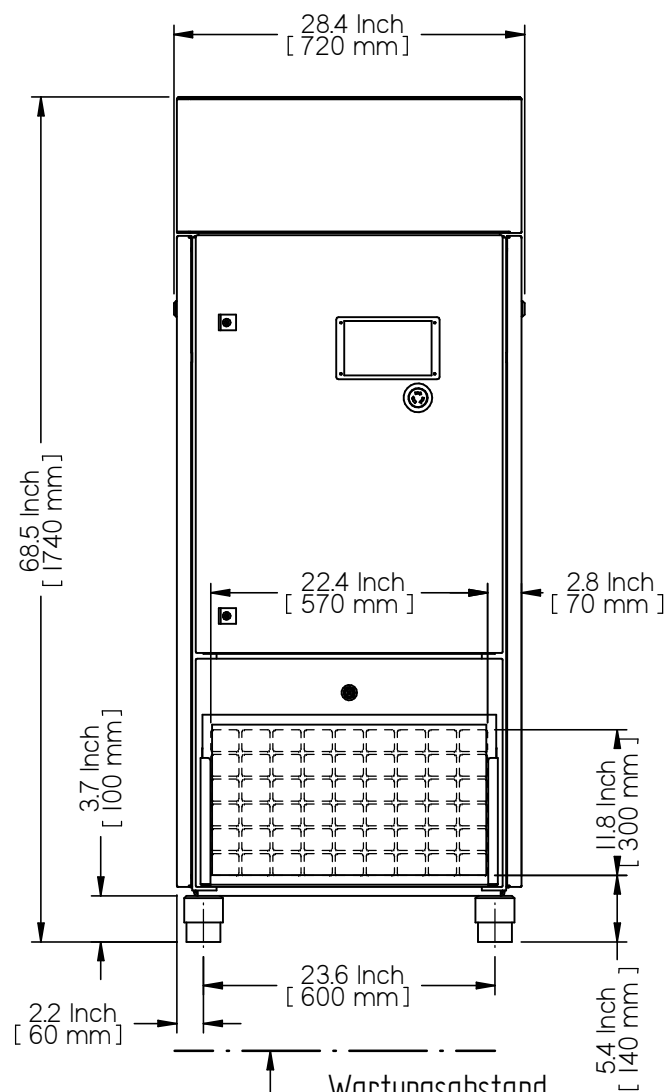
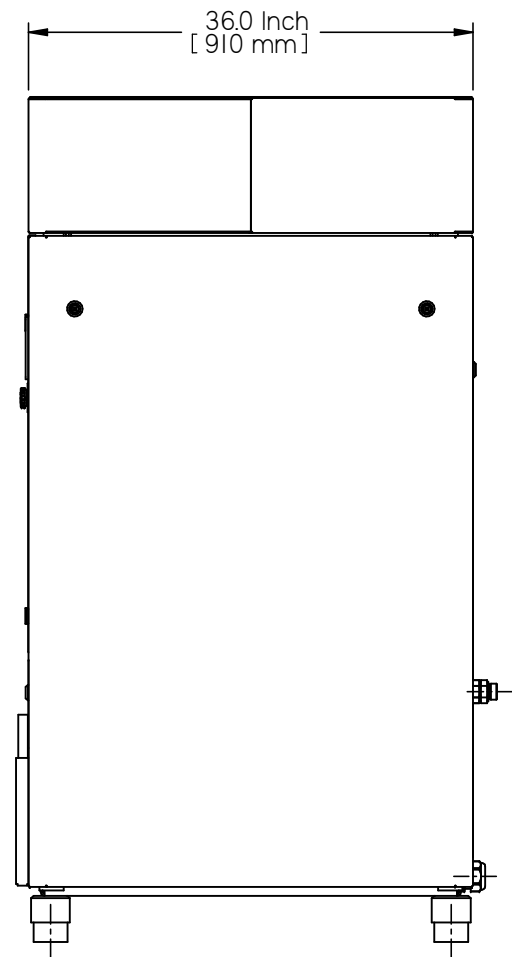


- NOTES:
1. ALL EQUIPMENT TO BE GROUNDED TO SKID
 2. SKID TO SIT ON LEVEL CONCRETE FLOOR, NO ANCHOR BOLTS REQUIRED
 3. DYNAMIC LOADING NEGLIGIBLE
 4. STATIC LOADING EVENLY DISTRIBUTED AT 53.5 LB/FT
 5. SEE DATA SHEETS FOR PROCESS AND DESIGN DATA
 6. ALL PAINTING PER CAE PAINT SPECIFICATION

B		CHANGES PER VENDOR MARKUPS	07MAR2014	SPH				
A		INITIAL RELEASE	24JAN2014	SPH				
REV	DCN NO.	DESCRIPTION	DATE	APPROVED				
REVISIONS								
<div></div> <div>CENTRAL AIR EQUIPMENT (FAB) LTD.</div>								
<div>1. DO NOT SCALE THIS DRAWING.</div> <div>2. UNLESS OTHERWISE SPECIFIED DIMENSIONS ARE IN INCHES. () ARE IN MILLIMETERS.</div> <div>3. TOLERANCES UNLESS OTHERWISE NOTED: .XXX 0.001 (0.005mm) .XX 0.01 (0.01mm) .X 0.1 (0.2mm)</div> <div>4. VIEWS SHOWN IN 3RD ANGLE PROJECTION.</div>		CENTRAL AIR EQUIPMENT LTD.			OIL FREE INSTRUMENT AIR PACKAGE: GENERAL ARRANGEMENT DRAWING			
		THIS PRINT IS THE PROPERTY OF CENTRAL AIR EQUIPMENT LTD. AND MAY NOT BE COPIED OR GIVEN TO ANY OTHER CONCER WITHOUT THE CONSENT OF CENTRAL AIR EQUIPMENT LTD			CLIENT NAME: MEG ENERGY PROJECT NAME: 1500 BPD HI-Q FIELD DEMONSTRATION PILOT PROJECT NO.: H343937 PROJECT LOCATION: BRUDERHIEM / ALBERTA			
		DRAWN	BY SPH	DATE 24JAN2014	SIZE A3	DRAWING NO. 60187-GA	PART NO. 60187A/B	REV B
		CHECK	BY	DATE	SCALE 1:35	WEIGHT 5350 LBS	SHEET SHEET 1 OF 1	
		APPRV	BY SPH	DATE 24JAN2014				



Elektrischer Anschluß
electrical connection

Wartungsabstand
maintenance clearance

Druckluftabgang NPT 1
compressed air outlet NPT 1

Wartungsabstand
maintenance clearance

Wartungsabstand
maintenance clearance

**VENDOR DRAWINGS
FOR REFERENCE ONLY**

	1)	2)	3)	4)	5)					
Typ	kg	lbs	N/cm ²	psi	m ³ /h	cfm	m ³ /h	cfm	m ²	sq.ft
C 16	481	1060	31	45	1700	1002	3700	2180	0,50	5,5
C 20	491	1082	32	46	2500	1475	4900	2890	0,65	7,2
C 25	504	1111	33	48	3100	1826	6000	3535	0,75	8,3
C 30	541	1193	35	51	3450	2033	7000	4125	0,90	9,9

Bedienseite
operating side

Sicherheitsabstand nach VDE 0100 Teil 729
safety clearance acc.to VDE 0100 section 729

1) Gewicht / weight

2) Die stat. Belastungen liegen unter den lt. VOB zulässigen Werten!
The static loads below the permissible values according to VOB!

3) Warmluftmenge / warm air amount

4) Erforderliche Ventilatorleistung zur Betriebsraumbelüftung
Required Ventilator power for ventilation of mechanical room.

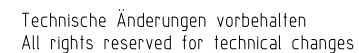
5) Erforderliche Zuluftöffnung (bei evtl. Einbau von Jalousien
u. d. ca. 20% größer)
Required supply air opening (with installation of shutters and
similar approx. 20% more largely)

4) + 5) Nach VDMA-Einheitsblatt 4363
acc. to VDMA standard sheet 4363

Technische Änderung vorbehalten / All rights reserved for technical changes

CLIENT NAME: MEG ENERGY
PROJECT NAME: 1500 BPD Hi-Q FIELD
DEMONSTRATION PILOT
PROJECT NO.: H343937
PROJECT LOCATION: BRUDERHIEM / ALBERTA

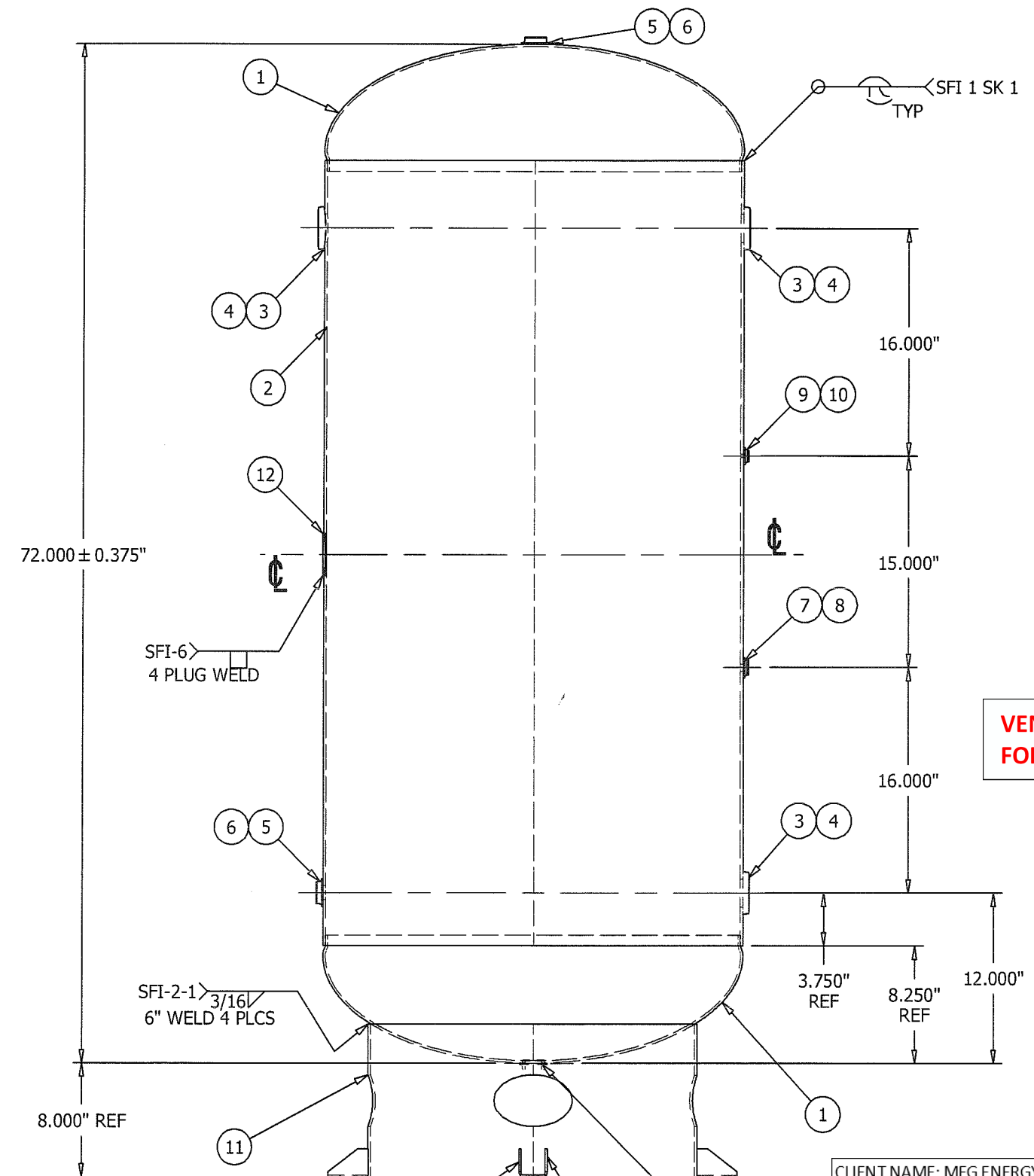
Maßstab scale				Wst.: material	
SAP-Gewicht 0				Identnummer identification number	
-	-	-	-	Datum/Date	Name/Name
-	-	-	-	11.06.2012	Heptner
-	-	-	-	11.06.2012	Heptner
-	-	-	-	11.06.2012	Heptner
-	-	-	-	Benennung/designation	
-	-	-	-	Schraubenkompressor Luftgekühlt screw compressor air cooled	
-	-	-	-	C 16 - C 30	
-	-	-	-	Zeichnungsnummer drawing number	
-	-	-	-	M3200.0924 DE-US	
-	-	-	-	Blatt/Sheet	
-	-	-	-	1 of 1	
Zust. status				Entf. discontinued	
Änderung/ modification				Entf. discontinued	
Datum / date				Entf. discontinued	
Name				Entf. discontinued	
DOK-ID				Entf. discontinued	
2160724/SDN/001/00				Entf. discontinued	
www.boge.com				Entf. discontinued	
The reproduction, distribution and utilization of this documents as well as the communication of its contents to others without expressed authorization is prohibited. Offenders will be held liable for the payment of damages. Rechte für den Fall der Patent-, Gebrauchsmuster- oder Geschmacksmuster-Eintragung vorbehalten.				The reproduction, distribution and utilization of this documents as well as the communication of its contents to others without expressed authorization is prohibited. Offenders will be held liable for the payment of damages. All rights reserved in the event of the grant of patent, utility model or ornamental design registration.	



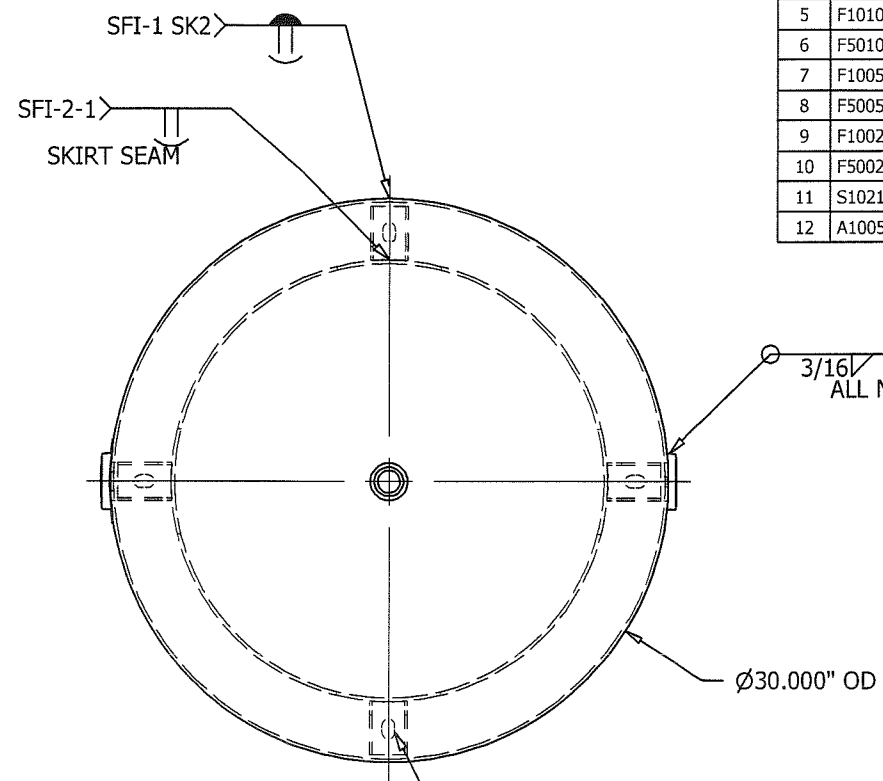
						Multi-tap scale		1 : 10		DIN A2 QUER		Nst./material:	
						Identnummer identification number		757109120					
						Datum/date		Name/name		Benennung/designation			
						06.01.2012		Wielbetier		Converter BC 22			
<p>Diese Zeichnung wurde mit CAD erstellt und ist ohne Unterschrift gültig. This drawing was made with CAD, valid without signature.</p> <div style="text-align: center;">  <p>www.boge.com</p> </div>													
						Zeichnungsnummer drawing number		M3100.0713 DE-GB				Blatt/sheet	
												Bl. of sheet	
Zust. changes		Änderung / modification		Datum / date		Name name		Urspr./origin		Erst/ registering by		Fertig/ implementation by	
<p>Werkzeuge sowie Vervielfältigung dieser Dokumente, Fälschung und Mitteilung seines Inhalts sind verboten, soweit nicht ausdrücklich gestattet. Zuwiderhandlungen verpflichten zu Schadenersatz. Alle Rechte für den Fall der Patent-, Gebrauchsmuster- oder Geschmackschutzverletzung vorbehalten.</p> <p>The reproduction, distribution and utilization of this documents as well as the communication of its contents to others without expressed authorization is prohibited. Offenders will be held liable for the payment of damages. All rights reserved in the event of the grant of patent, utility model or ornamental design registration.</p>													

**VENDOR DRAWINGS
FOR REFERENCE ONLY**

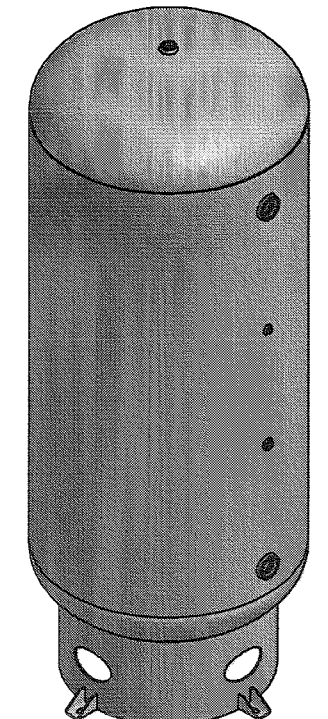
CLIENT NAME: MEG ENERGY
PROJECT NAME: 1500 BPD HI-Q FIELD
DEMONSTRATION PILOT
PROJECT NO.: H343937
PROJECT LOCATION: BRUDERHIEM / ALBERTA



FRONT VIEW
TRUE ELEVATION



TOP VIEW
TRUE ORIENTATION



ITEM	P/N	DESCRIPTION	MATERIAL	QTY
1	H30174J	HEAD , 0.174 M x 30" OD SE 2:1 JOGGLE	SA414-G	2
2	A10051-SLP	SHELL, .200" x 55.5" x 93.625"	SA414-G	1
3	F102001	WELD FLG, 2 NPT RAD O-RING	SA181-70	3
4	F502000	PLUG, 2 NPT PLASTIC PIPE	PLASTIC	3
5	F101000	WELD FLG, 1 NPT	SA181-70	3
6	F501000	PLUG, 1 NPT PLASTIC PIPE	PLASTIC	3
7	F100500	WELD FLG, 1/2 NPT	SA181-70	1
8	F500500	PLUG, 1/2 NPT PLASTIC PIPE	PLASTIC	1
9	F100250	WELD FLG, 1/4 NPT	SA181-70	1
10	F500250	PLUG, 1/4 NPT PLASTIC PIPE	PLASTIC	1
11	S102186	SKIRT ASY, 7GA x 23.50"OD	A-569	1
12	A10051-NP	NAME PLATE FOR A10051	A569	1

VENDOR DRAWINGS
FOR REFERENCE ONLY

**SHELL CUT SIZE IS REFERENCE ONLY
**SHIPPING WEIGHT: 455#
**IMPACT TEST EXEMPT PER UG 20(f)

30" x 72" 200# VERTICAL AIR RECEIVER
NOTES

TRAVELER REQUIRED	No	REQUISITION REQUIRED	No
RELEASED TO PRODUCTION		CALCULATED MINIMUMS	
SALES ORDER#		HEAD THK: .163"	MIN
RELEASE DATE:		SHELL THK: .199"	MIN
NB/SERIAL#			

HEAD THK: .174" MIN	C.A.: ---	MAT'L SA414-G	EFF 85 %
SHELL THK: .200" NOM	C.A.: ---	MAT'L SA414-G	EFF 70 %
NAT'L BD: YES	STAMP " U "	MAEWP --- PSI AT --- °F	
VOLUME: 200 APPROX GAL		MAWP 200 PSI AT 400 °F	
CRN: L4036.5C		MDMT -20 °F AT 200 PSI	
REF:		TEST: HYDRO AT 260 PSI	
		TEST: PNEU AT 260 PSI	

DESIGN & CALCULATIONS COMPLY WITH ASME CODE SECTION VIII, DIV1. LATEST EDITION AND ADDENDA			
STOCK		ENG. APP'L / DATE RGO - 3/27/1989	
		QCM. APP'L / DATE BW - 6/1/2007	
		A.I. VERIFICATION / DATE BQ - 6/1/2007	
STEEL FAB			
OAKVILLE, ONT.		ABINGDON, VA.	
DRAWN BY: RGO	P/N	A10051	PAGE 1 OF 2
DATE: 3/27/1989			REV. 14

CLIENT NAME: MEG ENERGY
PROJECT NAME: 1500 BPD Hi-Q FIELD
DEMONSTRATION PILOT
PROJECT NO.: H343937
PROJECT LOCATION: BRUDERHIEM / ALBERTA

REV	DATE	DESCRIPTION	ENG	QCM	AI/DATE
14	8/3/12	REMOVE FRONT OPENINGS/BOTTOM LEFT WAS 2"/ROTATE NAME PLATE	AH	JP	8/3/12
13	2/3/11	REDRAW IN INVENTOR - SHELL NOW PURCHASED	AH	JP	BQ 2/11/11

A10051

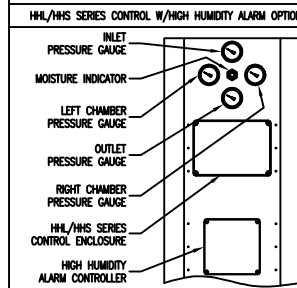
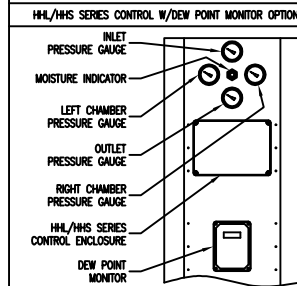
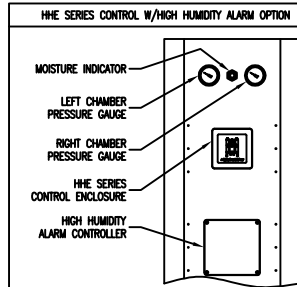
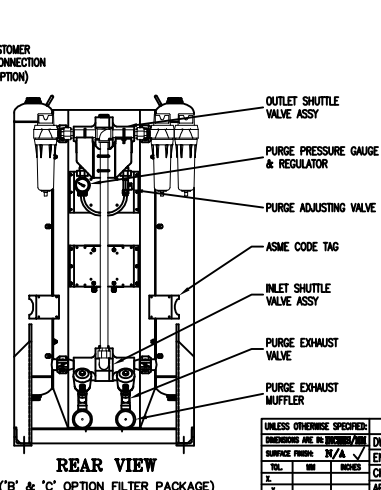
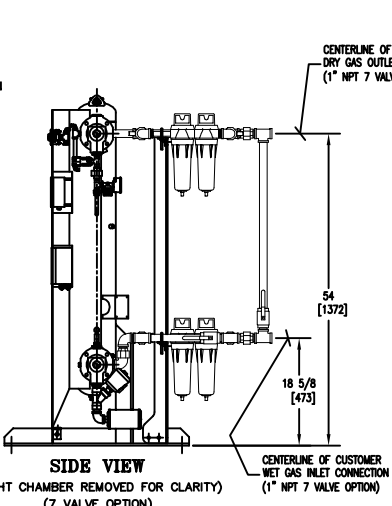
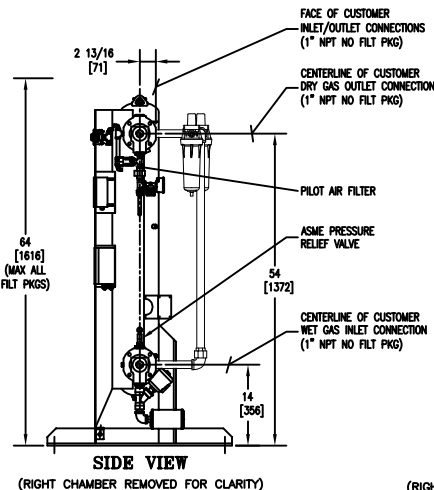
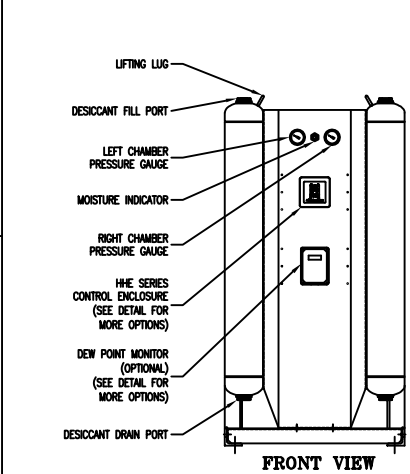
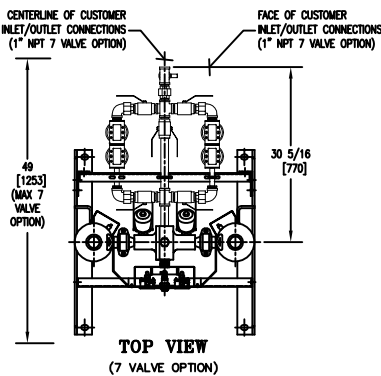
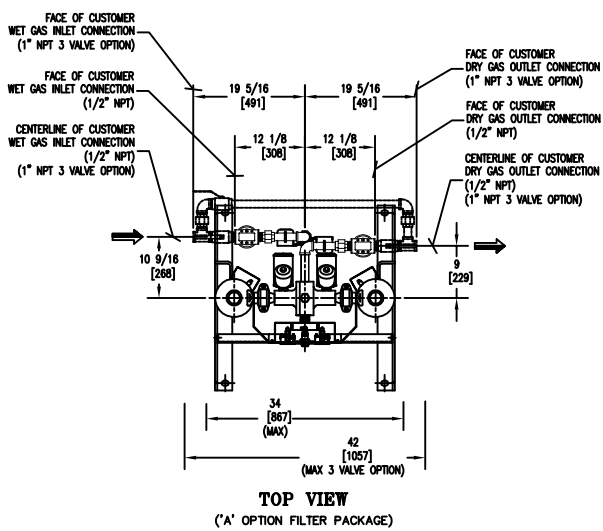
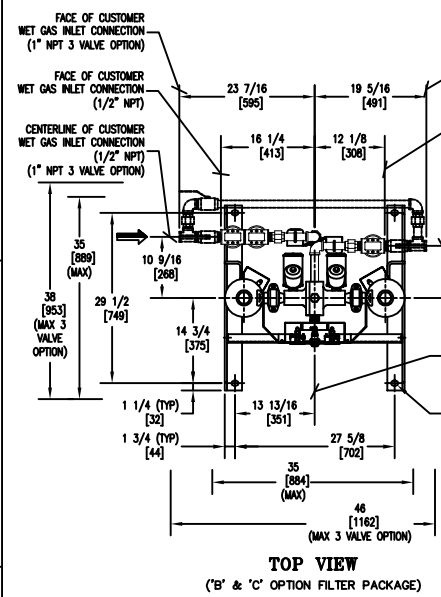
**VENDOR DRAWINGS
FOR REFERENCE ONLY**

CLIENT NAME: MEG ENERGY
PROJECT NAME: 1500 BPD HI-Q FIELD
DEMONSTRATION PILOT
PROJECT NO.: H343937
PROJECT LOCATION: BRUDERHIEM / ALBERTA

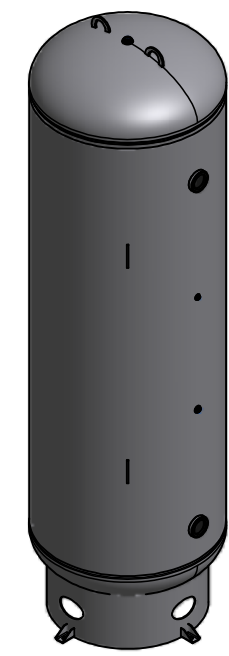
-- REVISIONS --									
ZONE	REV	DESCRIPTION	CHK BY	CHK BY	APP BY	REL BY	DATE		
-	1	ADDED 7 VALVE OPTION	SDM	DEB	DEB	SDM	02/06/08		

- NOTES:
- THIS DRAWING, TOGETHER WITH PAID AND SPECIFICATION SHEET, PROVIDES OPERATING CONDITIONS, SPECIFICATIONS, INSTALLATION, MOUNTING AND CONNECTION REQUIREMENTS.
 - PRESSURE VESSELS ARE DESIGNED AND BUILT IN ACCORDANCE WITH THE CURRENT CODE AND ADDENDA OF SECTION VIII, DIV. 1, OF THE A.S.M.E. CODE FOR UNFIRE PRESSURE VESSELS.
 - ELECTRICAL CONSTRUCTION IS IN ACCORDANCE WITH THE NATIONAL ELECTRICAL CODE.
 - ANCHOR BOLTS ARE TO PROJECT A MINIMUM OF 2" ABOVE THE FOUNDATION. ANCHOR BOLTS SHOULD BE INSTALLED IN SLEEVES TO ALLOW SOME ADJUSTMENT AT TIME OF INSTALLATION.
 - FOR MAINTENANCE PURPOSES, RECOMMENDED CLEARANCE AROUND DRYER IS 4 FEET (1220 MM).

- IF THE EQUIPMENT IS TO DRY (OR REACTIVATE WITH) A GAS OTHER THAN AIR, THE OUTLETS OF THE SAFETY VALVE, REACTIVATION GAS OUTLET LINE, BLOWDOWN VALVES, ETC. TO BE PIPED AWAY TO A SAFE LOCATION (BY PURCHASER). IN PIPING AWAY GAS, DO NOT PIPE UPWARD WITHOUT ADEQUATE ARRANGEMENTS TO PREVENT TRAPPING CONDENSATION.
- CUSTOMER SHOULD REQUEST A COPY OF QMS-013 IF PLANNING ON STORING UNIT LONG TERM BEFORE PLACING INTO SERVICE.
- WEIGHTS: SHIPPING WEIGHT 445 LBS. (APPROX.)
OPERATING WEIGHT 202 KGS (APPROX.)
202 KGS



UNLESS OTHERWISE SPECIFIED:		NAME	DATE
DIMENSIONS ARE IN INCHES/MILLIMETERS		SDM	06/18/05
TOLERANCES ARE:		ENG BY	06/18/05
FRACTIONS ARE 1/8, 1/4, 1/2, 3/4, 1, 2, 3, 4, 5, 6, 8, 10, 12, 16, 20, 24, 32, 40, 48, 60, 72, 96, 120, 144, 180, 240, 360, 480, 720, 1440		CHK BY	06/18/05
TYPICAL DIMENSIONS ARE IN INCHES/MILLIMETERS		APP BY	06/18/05
TYPICAL DIMENSIONS ARE IN INCHES/MILLIMETERS		REL BY	06/18/05
TYPICAL DIMENSIONS ARE IN INCHES/MILLIMETERS		SDM	06/18/05
TYPICAL DIMENSIONS ARE IN INCHES/MILLIMETERS		CAT NO.	
TYPICAL DIMENSIONS ARE IN INCHES/MILLIMETERS		ID NO.	96145
TYPICAL DIMENSIONS ARE IN INCHES/MILLIMETERS		D	0059101-60
TYPICAL DIMENSIONS ARE IN INCHES/MILLIMETERS		A	



**SHELL CUT SIZE IS REFERENCE ONLY
 **SEE PAGE 2 FOR PAINT
 **SHIPPING WEIGHT: 1105#
 **IMPACT TEST EXEMPT PER UG 20(f)

36" X 117" 200# VERTICAL AIR RECEIVER

NOTES

TRAVELER REQUIRED		Yes		REQUISITION REQUIRED		No		FIXTURE REQUIRED		No		IF YES THEN FIXTURE #		STOCK	
RELEASED TO PRODUCTION				CALCULATED MINIMUMS				DESIGN & CALCULATIONS COMPLY WITH ASME CODE SECTION VIII, DIV1. LATEST EDITION AND ADDENDA							
SALES ORDER#				HEAD THK: .196" MIN											
RELEASE DATE:				SHELL THK: .239" MIN											
NB/SERIAL#								SFI STOCK				ENG. APPL / DATE SBB - 3/7/1990			
HEAD THK: .238" MIN C.A.: --- MAT'L SA414-G EFF 85 % SHELL THK: .250" NOM C.A.: --- MAT'L SA455 EFF 70 %												QCM. APPL / DATE GJ-3/7/1990			
												A.I. VERIFICATION / DATE BQ-8/26/2009			
NAT'L BD: YES		STAMP " U "		MAEWP --- PSI AT --- 'F		STEEL FAB									
VOLUME: 500 APPROX		GAL		MAWP 200 PSI AT 400 'F											
CRN: L4040.5678901234T				MDMT -20 'F AT 200 PSI		OAKVILLE, ONT.				ABINGDON, VA.					
REF:				TEST: HYDRO AT 260 PSI		DRAWN BY: SBB		P/N		A10130		PAGE		REV.	
				TEST: PNEU AT --- PSI		DATE: 3/7/1990						PAGE 1 OF 2		17	