

V-508
1ST STAGE SUCTION SCRUBBER

SIZE: OD x S/S
DP/DT: 4137 kPag @ 66°C
CORR ALLOWANCE: 1.59mm
MFR: BARBER IND. (1988)
CRN: H4597.2
SERIAL NUMBER: 203900-5
A' NUMBER: 149565
HUSKY NUMBER: 002839
SAP #66044102

V-510
1ST STAGE SUCTION BOTTLE

SIZE: OD x S/S
DP/DT: 4137 kPag @ 149°C
CORR ALLOWANCE: 1.59mm
MFR: BARBER IND. (1988)
CRN: H4598.2
SERIAL NUMBER: 203900-6
A' NUMBER: 149567
HUSKY NUMBER: 002840
SAP #66041655

V-511
1ST STAGE DIST. BOTTLE

SIZE: OD x S/S
DP/DT: 4516 kPag @ 149°C
CORR ALLOWANCE: 1.59mm
MFR: BARBER IND. (1988)
CRN: H4599.2
SERIAL NUMBER: 203900-7
A' NUMBER: 149567
HUSKY NUMBER: 281996
SAP #66041593

K-503
SALE GAS COMPRESSOR

MAKE: TOSHIBA (1988)
DRIVE: ELECTRIC
RPM: 885, HP: 1850
VOLTS: 4160, AMPS: 242, HZ: 60
MODEL: J1858PK310T
S/N: 8810115
COMP. TYPE: SUPERIOR MODEL W72 FRAME
OPERATING SPEED:
SERIAL NUMBER: 2789282
HUSKY NUMBER: 281999

V-509
2ND STAGE SUCTION SCRUBBER

SIZE: OD x S/S
DP/DT: 4516 kPag @ 149°C
CORR ALLOWANCE: 1.59mm
MFR: BARBER IND. (1988)
CRN: H4600.2
SERIAL NUMBER: 203900-8
A' NUMBER: 149566
HUSKY NUMBER: 002842
SAP #66044219

V-512
2ND STAGE SUCTION BOTTLE

SIZE: OD x S/S
DP/DT: 4516 kPag @ 149°C
CORR ALLOWANCE: 1.59mm
MFR: BARBER IND. (1988)
CRN: H4601.2
SERIAL NUMBER: 203900-9
A' NUMBER: 149568
HUSKY NUMBER: 002843
SAP #66042053

V-513
2ND STAGE DIST. BOTTLE

SIZE: OD x S/S
DP/DT: 9067 kPag @ 149°C
CORR ALLOWANCE: 1.59mm
MFR: BARBER IND. (1988)
CRN: H4602.2
SERIAL NUMBER: 203900-10
A' NUMBER: 149569
HUSKY NUMBER: 283031
SAP #66041992

C-505A
COMPRESSOR AFTER COOLER

MFR: AIR-X-CHANGER
MAWP: 4516kPag @ 149°C
CRN: F590.2
S/N: 884128-2
NAT'L BDF: 15899
HUSKY NUMBER: 002849

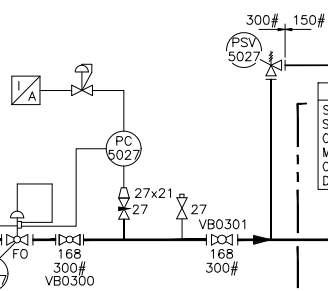
C-505B
COMPRESSOR AFTER COOLER

MFR: AIR-X-CHANGER
MAWP: 9067kPag @ 149°C
CRN: F372.2
S/N: 884128-3
NAT'L BDF: 15900
HUSKY NUMBER: 002848

S-103
VENT DRAIN TANK

SIZE: 250mm OD x 1000mm S/S
CAPACITY:
DP/DT: kPag @ °C
MFR:
CODE:
TYPE:
CRN:
HUSKY NUMBER:
INTERNAL COATING:

PG-BA-219.1-034
GAS FROM K-501
PI-0072-01
07-27-051-19W5



PSV-5027
SIZE: 114x168
SET @ 2758 kPa
ORIFICE: L
MFR: CROSBY
CAPACITY: 23305 SCFM
DESIGN: FAILURE

48

V-508

219
300#

219
300#

219
300#

219
300#

219
300#

219
300#

219
300#

219
300#

219
300#

219
300#

219
300#

219
300#

219
300#

219
300#

219
300#

219
300#

219
300#

219
300#

219
300#

219
300#

219
300#

219
300#

219
300#

219
300#

219
300#

219
300#

219
300#

219
300#

V-510

V-511

V-512

V-513

V-510

V-511

V-512

V-513

V-510

V-511

V-512

V-513

V-510

V-511

V-512

V-513

V-510

V-511

V-512

V-513

V-510

V-511

V-512

V-513

V-510

V-511

V-512

V-513

V-510

V-511

V-512

V-513

V-510

V-511

V-512

V-513

V-510

V-510

V-511

V-512

V-513

V-510

V-511

V-512

V-513

V-510

V-511

V-512

V-513

V-510

V-511

V-512

V-513

V-510

V-511

V-512

V-513

V-510

V-511

V-512

V-513

V-510

V-511

V-512

V-513

V-510

V-511

V-512

V-513

V-510

V-511

V-512

V-513

V-510

V-511

V-512

V-513

V-510

V-511

V-512

V-513

V-510

V-511

V-512

V-513

V-510

V-511

V-512

V-513

V-510

V-511

V-512

V-513

V-510

V-511

V-512

V-513

V-510

V-511

V-512

V-513

V-510

V-511

V-512

V-513

V-510

V-511

V-512

V-513

PRODUCED WATER TO HEADER
PI-0090-03
07-27-051-19W5
GAS TO SALES
PI-0083-01
07-27-051-19W5

HUSKY OIL OPERATIONS LIMITED
2019/07/24
AS BUILT

REF DWG NO	REFERENCE DRAWING DESCRIPTION	NO	REVISION HISTORY	REV AUTHOR	REV DATE	ISSUED FOR	NO	CURRENT REVISION	ISSUED FOR
		7	AS BUILT (GLE 08240)	EPC_GLE	2009/02/17	AS BUILT	12	AS BUILT FOR CC 80026796	AS BUILT
		8	UPDATED FROM MARK UPS FOR MOC 16506172	SK	2016/04/29	AS BUILT			DOC DATE 2019/07/24
		9	AS BUILT FOR CC 80026796	KZ	2016/09/02	CONSTRUCTION			DOC AUTHOR LG
		10	AS BUILT FOR CC 80026796	KZ	2019/03/08	AS BUILT			SCALE NTS
		11	AS BUILT FOR CC 80026796	SK	2019/07/03	AS BUILT			ALTERNATE IDENTIFIER F-81901-F-00-01-27
		5	RE DRAWN & AS BUILT FROM F-81901-F-00-01 FOR CALTECH 11334	EPC_CALTECH	2006/11/24	AS BUILT			SURFACE L&D 07-27-051-19W5
		6	PREPARED FOR EWR 011603, GLE 08090	EPC_GLE	2008/05/21	CONSTRUCTION			DOCUMENT IDENTIFIER PI-0081-01

NOTES:
1. WIRELESS TRANSMITTERS (PRESS. & TEMP.) ARE FOR COMPRESSOR MONITORING ONLY. NO CONTROL OR SD. ACTIONS.

Husky Oil Operations Limited

ANSELL GAS PLANT #1 07-27-051-19W5

K-503 SALES GAS COMPRESSOR
PIPING & INSTRUMENTATION DIAGRAM

CAD DRAWING: DO NOT CHANGE MANUALLY