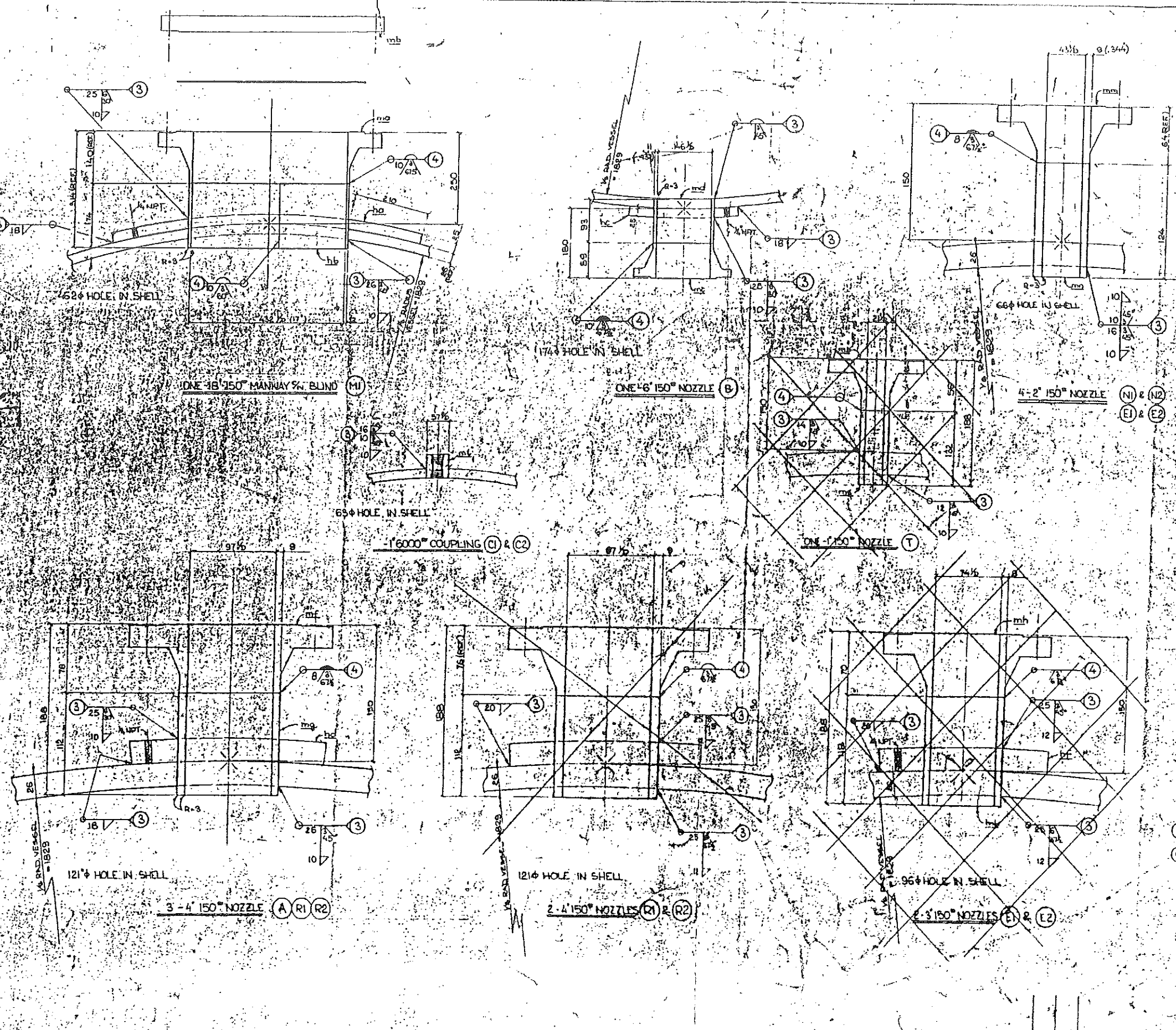


TO VENDOR/TEX 3/6/81



Material List						
Item	Qty	Size and Specs	Mat	LAZY PL	Loc	Remarks
		ONE - 6" MUFFIN	(M-11)			
mc	1	18" 150# RF WN FLG SA105				BORE 17"
mb	1	18" 150# RF WN FLG SA105				
hcr	1	R 25-3763-468% SA5670				
hb	1	R 12-174	SA5670	1395		
		ONE - 6" NOZZLE	(B)			
mc	1	6" 150# RF WN FLG SA105				BORE 5.761
mc	1	PIPE 6" X 8 SA106B		93		
hc	1	R 25-2083-180% SA5670				
		3-4" NOZZLE (A) (R) (R)				
mf	3	4" 150# RF WN FLG SA105				BORE 3.826
mq	3	PIPE 4" X 8 SA106B		112		
hd	3	R 25-2083-126% SA5670				
		4-2" NOZZLES (N) (N) (E) (E)				
mm	4	2" 150# RF WN FLG SA105				BORE 1.695
mn	4	PIPE 2" SCH 160 A106-B		124		
		3-COUPLING 6000	(C) (C) (T)			
ml	3	6000" COUPLING SA105				

16	SI	1/2\"/>
----	----	---------

Please refer this drawing Approved  
 JUN 18 1981  
 Drawings not returned by this date  
 will be considered to be approved  
 Issued.

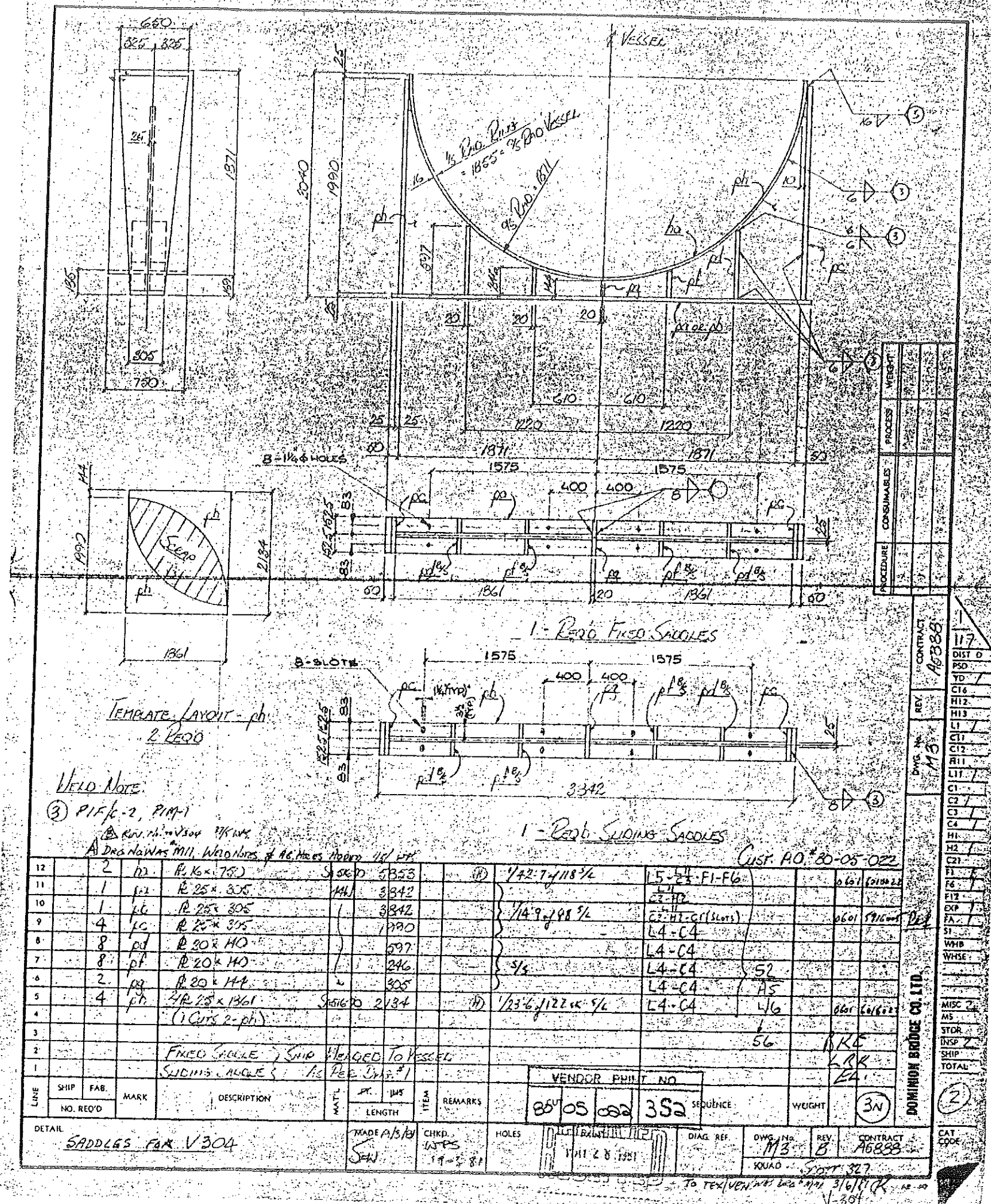
FOR APPROVAL

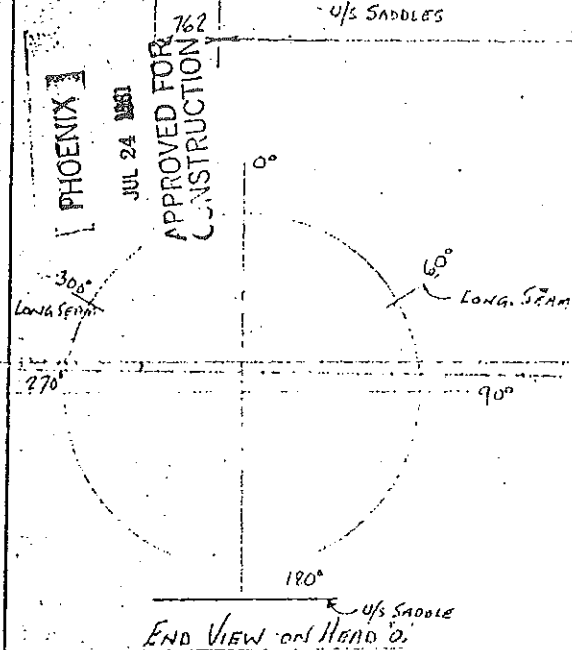
RECEIVED  
 JUN 18 1981

FIELD NOTES  
 (3) WPS PISC-2, DIM-1  
 (4) WPS PISC-2, DIM-4B

VENDOR PART NO.			
20	05	022	6 S1

CUST. PO. # 80-05-022			
DOMINION BRIDGE COMPANY LIMITED ALBERTA			
DESCRIPTION RERUN TANK EV304			
DETAIL NOZZLES			
PURCHASER PHOENIX CONTRACTORS LTD FOR TEXACO LTD BONNEGLEN			
MADE IN CANADA	DATE 4/5/81	CONT. No.	DWG. No.
CHIEF	DATE 1/1/81	APPROB	2
12000 S. IT 227			





PHOENIX

MAY 24 1981

APPROVED FOR  
CONSTRUCTION

RECEIVED  
MAR 24 1961

VENDOR PRINT NO.

80	05	022	1S 2
----	----	-----	------

HENDS NORMALIZED - No  
SHELL NORMALIZED - No  
VESSEL - HT - No  
WELD RT - PARTIAL - "RT2"  
REFER CUST Dwg "V304"

WST P<sup>#</sup> 80-05-022

[illegible]

DETAIL R. R. 11 - V2  
PHOENIX - TEXAS

MAIN

CHND	
------	--

HOLES
1
2
3
4
5
6
7
8
9
10
11
12
13
14
15
16
17
18
19
20
21
22
23
24
25
26
27
28
29
30
31
32
33
34
35
36
37
38
39
40
41
42
43
44
45
46
47
48
49
50
51
52
53
54
55
56
57
58
59
60
61
62
63
64
65
66
67
68
69
70
71
72
73
74
75
76
77
78
79
80
81
82
83
84
85
86
87
88
89
90
91
92
93
94
95
96
97
98
99
100

PAINT

DIAG. REF.
------------

DYWG

REV.	
------	--

CONTRA

CI

CAT

DOMINION BRIDGE CO. LTD.

DWG No P1	REV	CONTRACT A5888
--------------	-----	-------------------

DIST 1
ED
YD
C16
H12
H13
L1
C11
C12
H11
L11
C1
C2
C3
MAIN
H1
H2
C21
F1
F6
EXP
FA
S1

MISC
MS
STOR
INSP
SHIP
TOTAL

CAT

TO TEXACO  
APRIL 13/81

TO VENDOR  
APRIL 10 / 81

SQUAD PLATE: 327

AREA 3