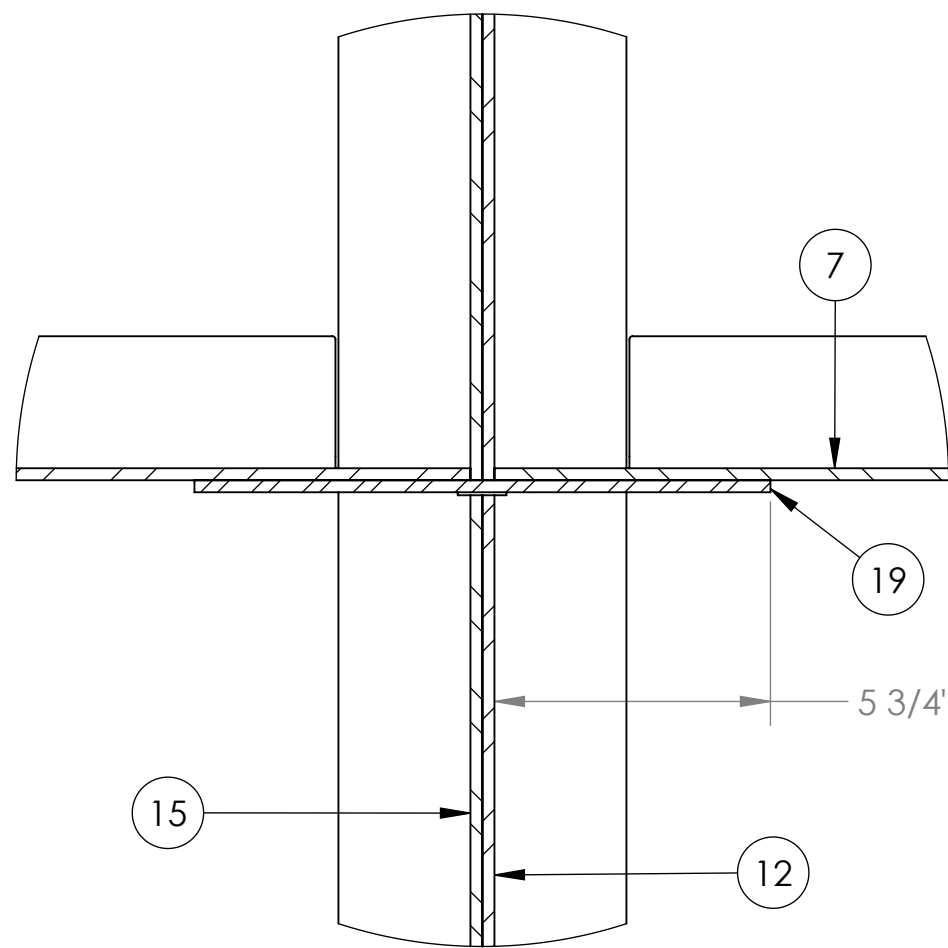
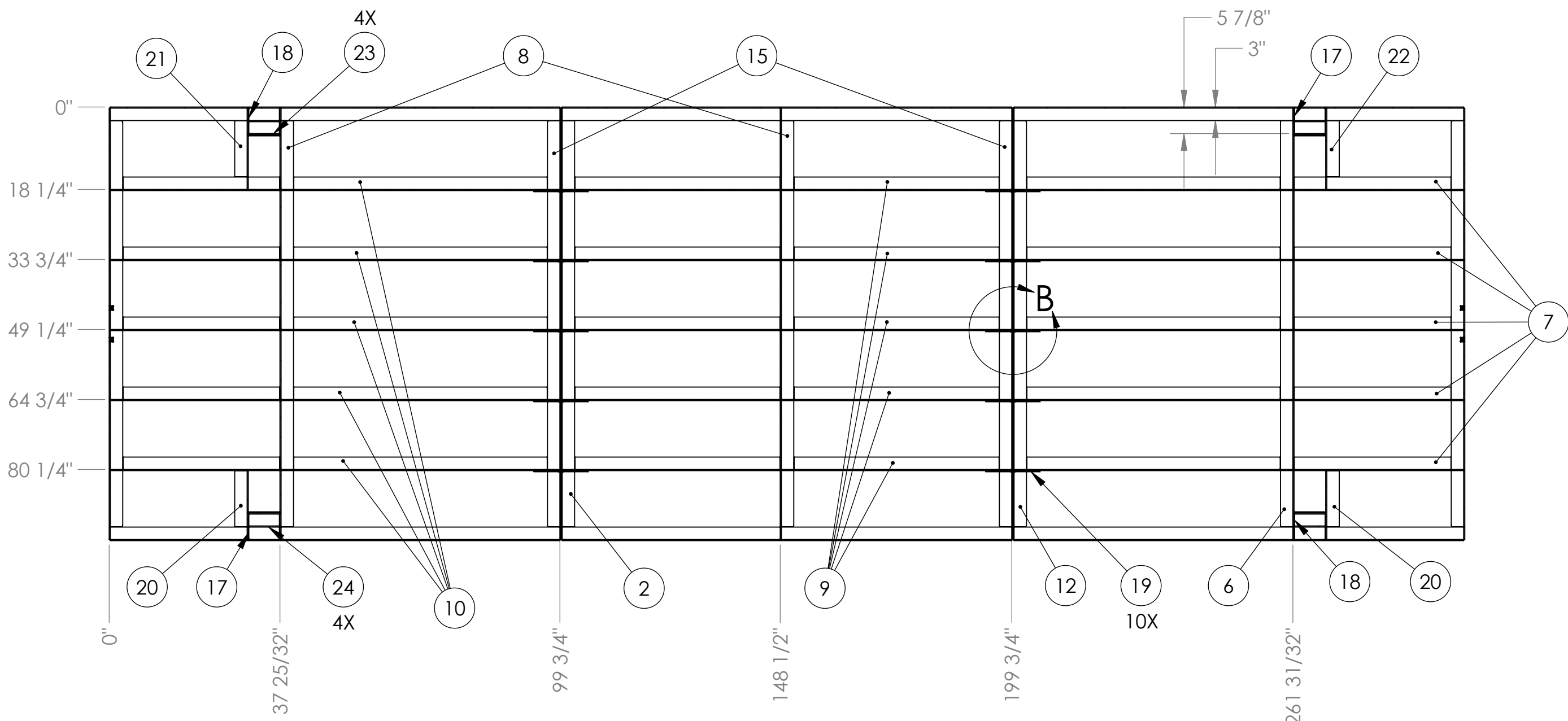
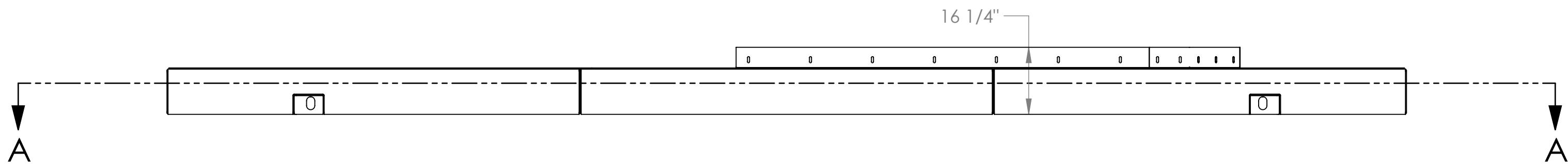
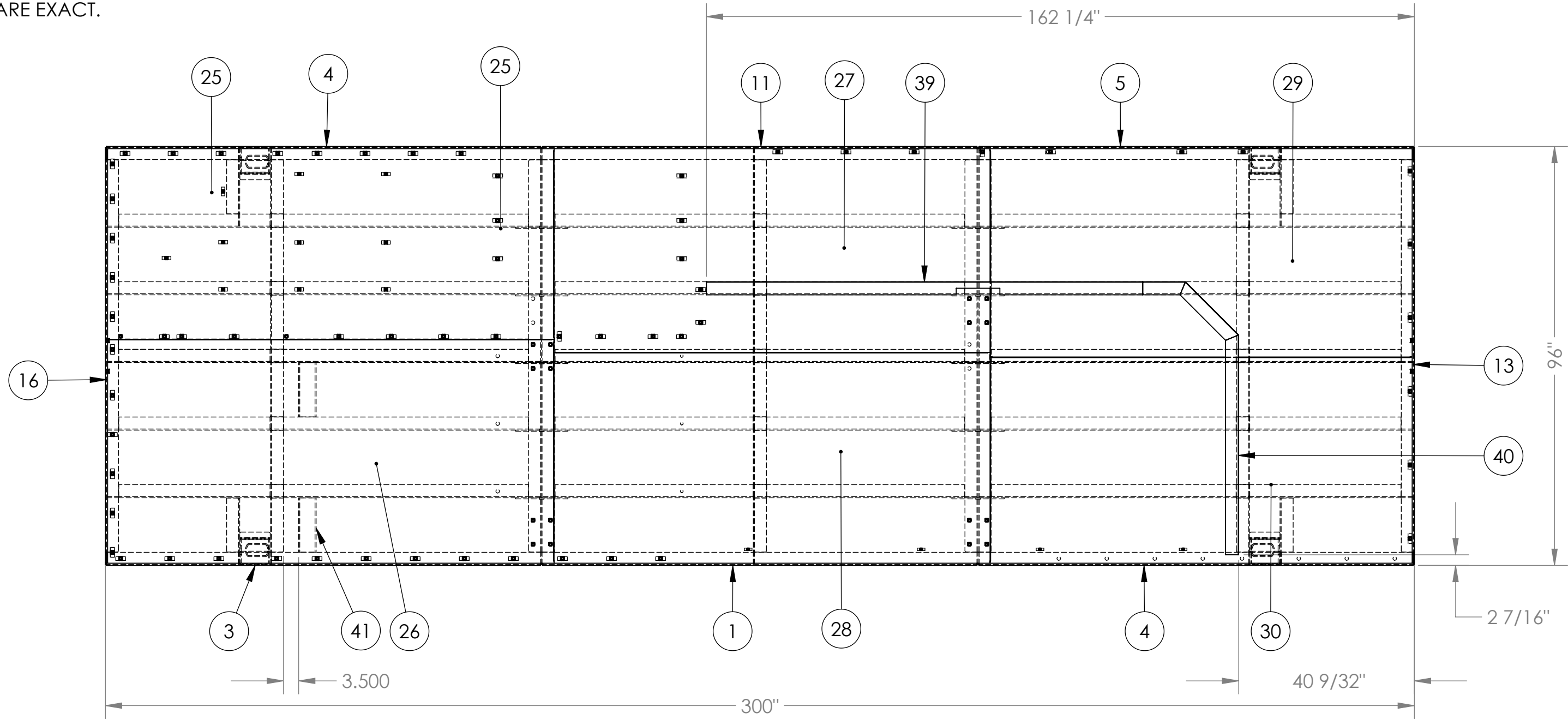
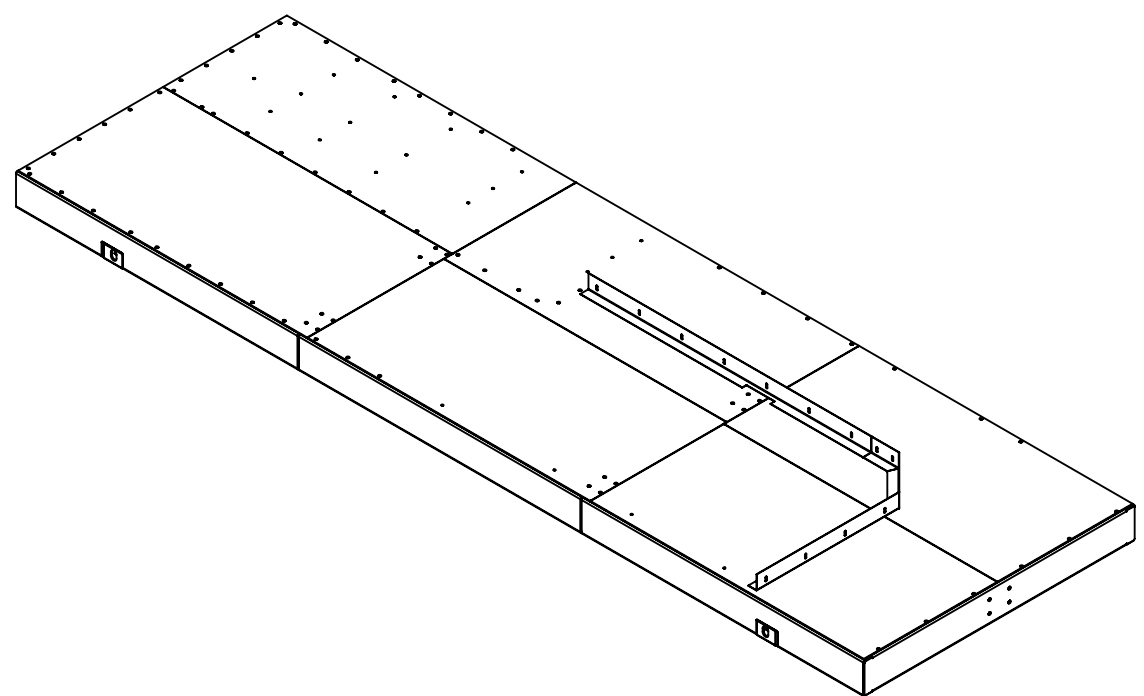


GENERAL NOTES
UNLESS SPECIFIED OTHERWISE:

1. ALL DIMENSIONS ARE IN INCHES.
2. DEBURR AND BREAK ALL SHARP EDGES
3. PAINT AS PER CUSTOMER SPECIFICATION, COLOR: XXXXX
4. ALL THREADS AND MANCHINED SURFACES MUST BE PROTECTED FROM PAINT AND BLASTING MEDIUM.
5. 1/4" FILLET SEAL WELD
6. ALL WELDING PER AWS D1.1
7. VENDOR RESPONSIBLE FOR ADDING APPROPRIATE GAPS WHEN FITTING WELDMENT, ALL DIMENSIONS ARE EXACT.



DETAIL B
SCALE 1 : 4



Rev	ECX	BY:	DATE	DESCRIPTION
A	-	-	-	-
REVISIONS				

ITEM NO.	PART NUMBER	VENDOR	VENDOR NUMBER	DESCRIPTION	QTY
1	01-013170			MAIN SKID BEAM 1	1
2	01-013841			MAIN SKID BEAM 13	1
3	01-013719				1
4	01-013720				2
5	01-013721			MAIN SKID BEAM 4	1
6	01-013731			MAIN SKID CROSSMEMBER	1
7	01-013735			MAIN SKID BEAM 6	5
8	01-013738			MAIN SKID CROSSMEMBER 2	2
9	01-013736			MAIN SKID BEAM 7	4
10	01-013737			MAIN SKID BEAM 8	4
11	01-013778			MAIN SKID BEAM 9	1
12	01-013779			MAIN SKID BEAM 10	1
13	01-013780			MAIN SKID BEAM 11	1
f	01-013774	McMaster Carr	90955A121	EASY ALIGN WELD NUT, 1/2"-13	71
15	01-013838			MAIN SKID BEAM 12	2
16	01-013839			MAIN SKID END BEAM	1
17	01-012481			ISO BLOCK BOTTOM RIGHT	2
18	01-012486			MIRRORISO BLOCK BOTTOM RIGHT	2
19	01-013837			MAIN SKID TIE IN PLATE	10
20	01-013868			MAIN SKID CROSSMEMBER SHORT	2
21	01-013869			MAIN SKID CROSSMEMBER SHORT 2	1
22	01-013870			MAIN SKID CROSSMEMBER SHORT 3	1
23	01-013871			ISO BLOCK TIE-IN PLATE	4
24	01-013872			ISO BLOCK TIE-IN PLATE 2	4
25	01-014945			01-014945	1
26	01-014944			01-014944	1
27	01-014950			01-014950	1
28	01-014946			01-014946	1
29	01-014947			01-014947	1
30	01-014948			01-014948	1
31	01-013790			EASY ALIGN WELD NUT, 1/4"-20	4
32	01-014991			3/8" WELD NUT	10
33	01-015045			5/8" WELD NUT	16
34	01-015046			1/2"-13 SQUARE WELD NUT	2
35	01-015041			MAIN SKID BEAM 7 WITH HOLE	1
36	01-015042			BACKING PLATE: MAIN SKID	1
37	01-015043			BACKING PLATE: MAIN SKID	1
38	01-015044			MAIN SKID BEAM 8 W/ HOLE	1
39	01-015048			ANGLE: ALIGNMENT FOR ELECTRICAL ROOM	1
40	01-015049			ANGLE: BACKING ANGLE FOR ELECTRICAL ROOM ALIGNMENT	1
41		CMC OF GEORGIA		4" PRESSED CHANNEL, SCATTER SHIELD SUPPORT	2

PROPRIETARY AND CONFIDENTIAL

THE INFORMATION CONTAINED HEREON SHALL BE CONSIDERED THE SOLE PROPERTY OF TURBINE POWERED TECHNOLOGY, LLC. AND THE RECIPIENT THEREOF. AGREES NOT TO DISCLOSE SAID INFORMATION TO PARTIES OUTSIDE THE RECIPIENT'S ORGANIZATION AND NOT TO USE, MODIFY, CHANGE OR DUPLICATE SAID INFORMATION FOR ANY PURPOSE EXCEPT AS SPECIFIED BY TURBINE POWERED TECHNOLOGY, LLC. WITHOUT THE WRITTEN PERMISSION TURBINE POWERED TECHNOLOGY, LLC. COPYRIGHT 2019.

UNLESS OTHERWISE SPECIFIED:

DIMENSIONS ARE IN INCHES(mm)

TOLERANCES:

X ±.1

XX ±.03

XXX ±.005

FRACTIONAL: ±1/16"

ANGULAR: ±1/2°

FINISH: 125 μin

FIRST RELEASE INFORMATION

DRAWN BY: JBH 07/17/2013

CHECKED BY: - - -

APPROVED BY: - - -

SCALE: 1:24

THIRD ANGLE PROJECTION

FIRM NAME: wmd² Lafayette, LA

TITLE: WELDMENT, MAIN SKID

SIZE: 11x14x1/4

1. DO NOT SCALE DRAWING

2. INTERPRET DIM. TOL. PER ASME Y14.5M-1994

3. INSIDE CORNERS R.032

OUTSIDE CORNERS R.020

OR CHAM. .020 X 45°

REV A

SHEET 1 OF 1

WEIGHT: 5323.629 lb

PART NO. 01-013172