

| NOZZLE AND COUPLING SCHEDULE | | | | | | | | | | | | | |
|------------------------------|------|------------|------------------------|------------------------|---------------------|---------------------------|-----------------------|--------------------------|------------------------|-----------|-----------------|-------------------|--|
| Mark No. | Qty. | Size | ANSI Rating And Facing | Service | O.D. of Nozzle Neck | Projection Inside Outside | Welding Detail Number | Fillet Weld Size A B C D | Bill of Mat'l Item No. | Remarks | Elevation | Orientation Angle | |
| H1 | 1 | #8 [219mm] | SA 105 150# R.F. | FLARE GAS INLET NOZZLE | 8 5/8 [219] | 0" | 20" | 2,3 | 3/8" | WELD NECK | 10'-0" [3048mm] | 90° | |

NOZZLE SCHEDULE AND WELD DETAILS

| WELD DETAIL 1 | WELD DETAIL 2 | WELD DETAIL 3 | WELD DETAIL 5 |
|-----------------------|-----------------------------|-----------------------------|-----------------------------|
| | | | |
| Weld Procedure: TT-10 | Weld Procedure: TT-1, TT-31 | Weld Procedure: TT-1, TT-31 | Weld Procedure: TT-1, TT-31 |

VENDOR TO PROCEED AS NOTED

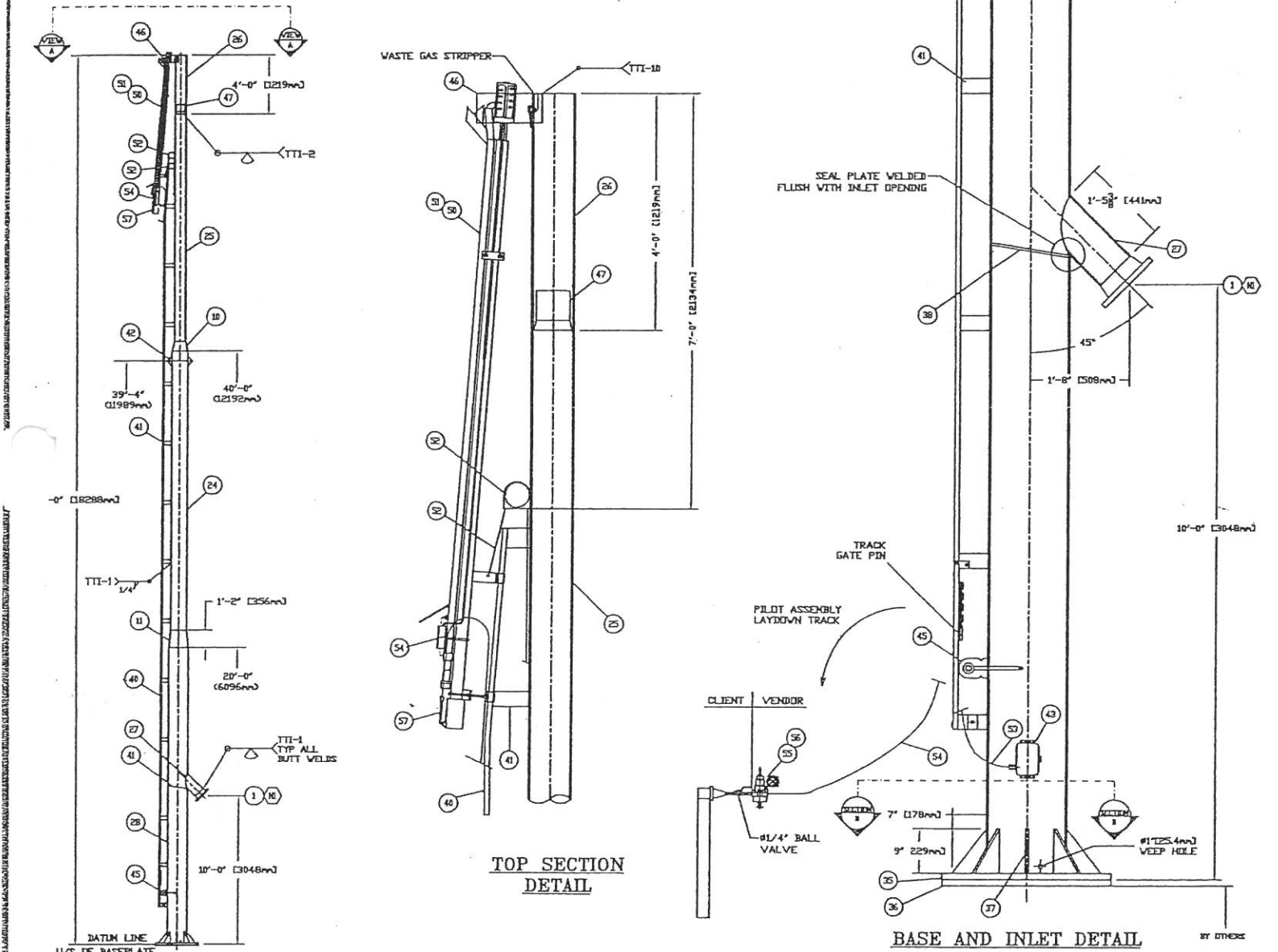
☒ APPROVED FOR CONSTRUCTION.

☐ APPROVED FOR CONST. AS NOTED

☐ REVISE AND RESUBMIT AS NOTED

SIGNED: *[Signature]*

DATE: *Nov 28/06*

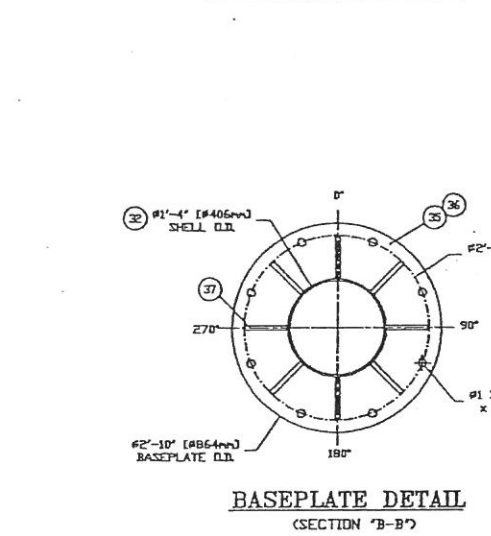
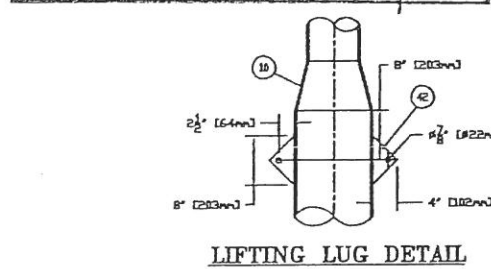


PROJECT NAME:

DATE: *Nov 24/06*

PROJECT #:

RB/RS



| Bill of Materials | | | | | | | | | | | |
|-------------------|-----|----------------------|--------|---------|---------|------|---|----------------------------|-------|--|--|
| No | Qty | Size | Bore | Rating | PCB | Type | Specification/Material | Remarks | Heat# | | |
| 1 | 1 | #8 [219] | STD | 150# | R.F. | W.N. | ANSI SA 105 | H1 - FLARE GAS INLET CONN. | | | |
| 2 | | | | | | | | | | | |
| 3 | | | | | | | | | | | |
| 4 | | | | | | | | | | | |
| 5 | | | | | | | | | | | |
| 6 | | | | | | | | | | | |
| 7 | | | | | | | | | | | |
| 8 | | | | | | | | | | | |
| 9 | | | | | | | | | | | |
| 10 | 1 | 12" x 8" | STD | REDUCER | | | SA 234 WPB | FLUE CONCENTRIC REDUCER | | | |
| 11 | 1 | 16" x 12" | STD | REDUCER | | | SA 234 WPB | FLUE CONCENTRIC REDUCER | | | |
| 12 | | | | | | | | | | | |
| 13 | | | | | | | | | | | |
| 14 | | | | | | | | | | | |
| 15 | | | | | | | | | | | |
| 16 | | | | | | | | | | | |
| 17 | | | | | | | | | | | |
| 18 | | | | | | | | | | | |
| 19 | | | | | | | | | | | |
| 20 | | | | | | | | | | | |
| 21 | | | | | | | | | | | |
| 22 | | | | | | | | | | | |
| 23 | | | | | | | | | | | |
| 24 | 1 | #12 [305] | SMLS | STD | | | SA 106B x 18'-10" [5740] LG. | STACK FLUE | | | |
| 25 | 1 | #8 [219] | SMLS | STD | | | SA 106B x 15'-4" [4674] LG. | STACK FLUE | | | |
| 26 | 1 | #8 [219] | TP 312 | STD | 241 MPa | | 304L S.S. x 4'-0" [1219] LG. | STACK TP | | | |
| 27 | 1 | #8 [219] | SMLS | STD | | | SA 106B x 1'-5 3/8" [441] LG. | STACK INLET EXT. | | | |
| 28 | 1 | #16 [406] | SMLS | STD | | | SA 106B x 20'-0" [6096] LG. | STACK FLUE | | | |
| 29 | | | | | | | | | | | |
| 30 | | | | | | | | | | | |
| 31 | | | | | | | | | | | |
| 32 | | | | | | | | | | | |
| 33 | | | | | | | | | | | |
| 34 | | | | | | | | | | | |
| 35 | 1 | #34 [864mm] | | | | | 1 1/4" THK SA 38 CS PLATE | BASEPLATE | | | |
| 36 | 1 | #34 [864mm] | | | | | 1 1/4" THK SA 38 CS PLATE | MATING BASEPLATE | | | |
| 37 | 8 | 8" x 7" [229 x 178] | | | | | 3/4" THK SA 38 CS PLATE | BASEPLATE GUSSETS | | | |
| 38 | 1 | #15 [381] | | | | | 1/2" THK SA 38 CS PLATE | SEAL PLATE | | | |
| 39 | | | | | | | | | | | |
| 40 | LOT | 2" x 1 [51 x 25] | | | | | 1/8" THK HSS TUBING | PILOT TRACKING | | | |
| 41 | LOT | 3" FLAT | | | | | 1/4" THK SA 38 CS PLATE | TRACKING SUPPORTS | | | |
| 42 | 2 | 8" x 4" [203 x 102] | | | | | 1/2" THK SA 38 CS PLATE | LIFTING LUGS | | | |
| 43 | 1 | | | | | | FS 12 ELECTRICAL JUNCTION BOX | JUNCTION BOX | | | |
| 44 | 1 | | | | | | PILOT RETRACTING ENCLOSED CS PULLEY | PILOT PULLEY | | | |
| 45 | 1 | | | | | | PILOT RETRACTING WINCH | PILOT WINCH | | | |
| 46 | | | | | | | | | | | |
| 46 | 1 | 12" x 8" [305 x 152] | | | | | 1/4" THK 316L S.S. PLATE | PILOT WIND SHROUD | | | |
| 47 | 1 | #8 [203] | | | | | TT 304L S.S. PLATE VELOCITY ARRESTOR (WELD-IN TYPE) | AIR PURGE SEAL | | | |
| 48 | | | | | | | | | | | |
| 49 | | | | | | | | | | | |
| 50 | 1 | | | | | | TORNADO RETRACTABLE FUEL GAS PILOT T3#8 | FUEL GAS PILOT | | | |
| 51 | 1 | | | | | | TORNADO PILOT MONITOR & RELIGHT SYSTEM TPR 120 V.A.C. | RELIGHT SYSTEM | | | |
| 52 | LOT | 3/16" | | | | | S.S. PILOT RETRACTING PULLEY CABLE | PULLEY CABLE | | | |
| 53 | LOT | #16-4 | | | | | SOW ELECTRICAL CABLE | ELECTRICAL CABLE | | | |
| 54 | LOT | 1/4" | | | | | NPT TYPE 3 FLEXIBLE FUEL SUPPLY HOSE | FUEL HOSE | | | |
| 55 | 1 | 1/4" | | | | | NPT BELLOFRAM TYPE 50 REGULATOR | REGULATOR | | | |
| 56 | 1 | 1/4" | | | | | NPT 2" DIAL FACE 0-30 PSI DRY CS GAUGE | GAUGE | | | |
| 57 | 1 | 1/4" | | | | | NPT PARKER INLINE HIGH PRESSURE FUEL FILTER | FUEL FILTER | | | |
| 58 | | | | | | | | | | | |
| 59 | | | | | | | | | | | |
| 60 | | | | | | | | | | | |

General Notes:

Tag #:

Ship To Location:

HARMATTEN CONDENSATE PLANT

Moment At Foundation Base:

Mag Particle Procedure:

Radiography / Iray:

Coolant Tracing:

Aluminum Cladding:

Corrosion Allowance:

Weld Procedure #:

Q.C. Program #:

Ignition System

TORNADO RETRACTABLE FUEL GAS PILOT MODEL TSI #5 c/w RELITE SYSTEM MODEL: TPR 120 V.A.C.

NO

NO

NO

NO

.0625"

#1323.2

AQP-1265

Dwg. By:

EMW

Date:

06 11 22

Y M D

Salesperson:

JERRY SMOLARSKI

JOB#:

QUOTE#:

Sheet 1 of 1

Title:

ø8" x 60'-0" TALL SELF SUPPORTED FLARE STACK c/w ø8" INLET CONNECTION

Customer:

c/o TUNDRA ENGINEERING ASSOCIATES LTD.

P.O.#:

LSD

REV.

ALBERTA

ISSUED FOR APPROVAL PURPOSES

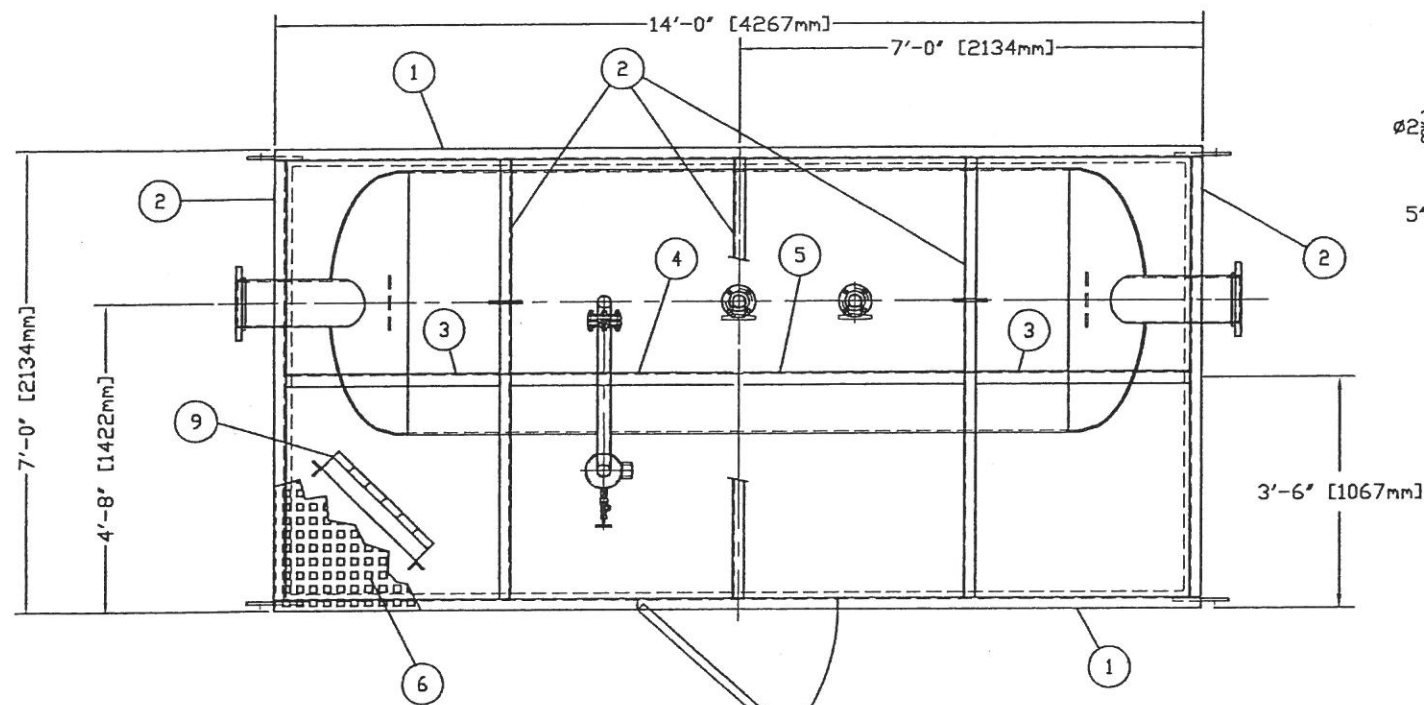
EW 06 11 22

By Y M D

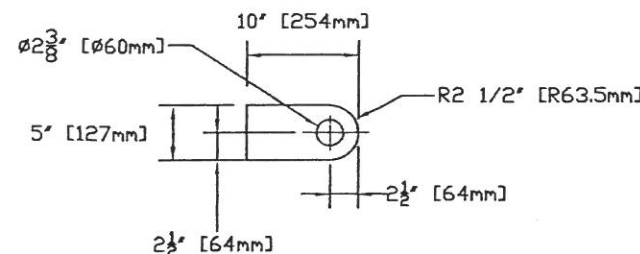
TORNADO TECHNOLOGIES CANADA INC.

Any Technical Data and the Designs Disclosed Herein are the Exclusive Property of Tornado Technologies Inc. and/or Contained the Proprietary Rights of Others and are not to be used or Disclosed to Others without the Written Consent of Tornado Technologies Inc.

PHONE# (403)883-2400
FAX# (403)883-2550
TOLL FREE# 1-800-661-4128
WEB SITE: WWW.TORNADOTECH.NET



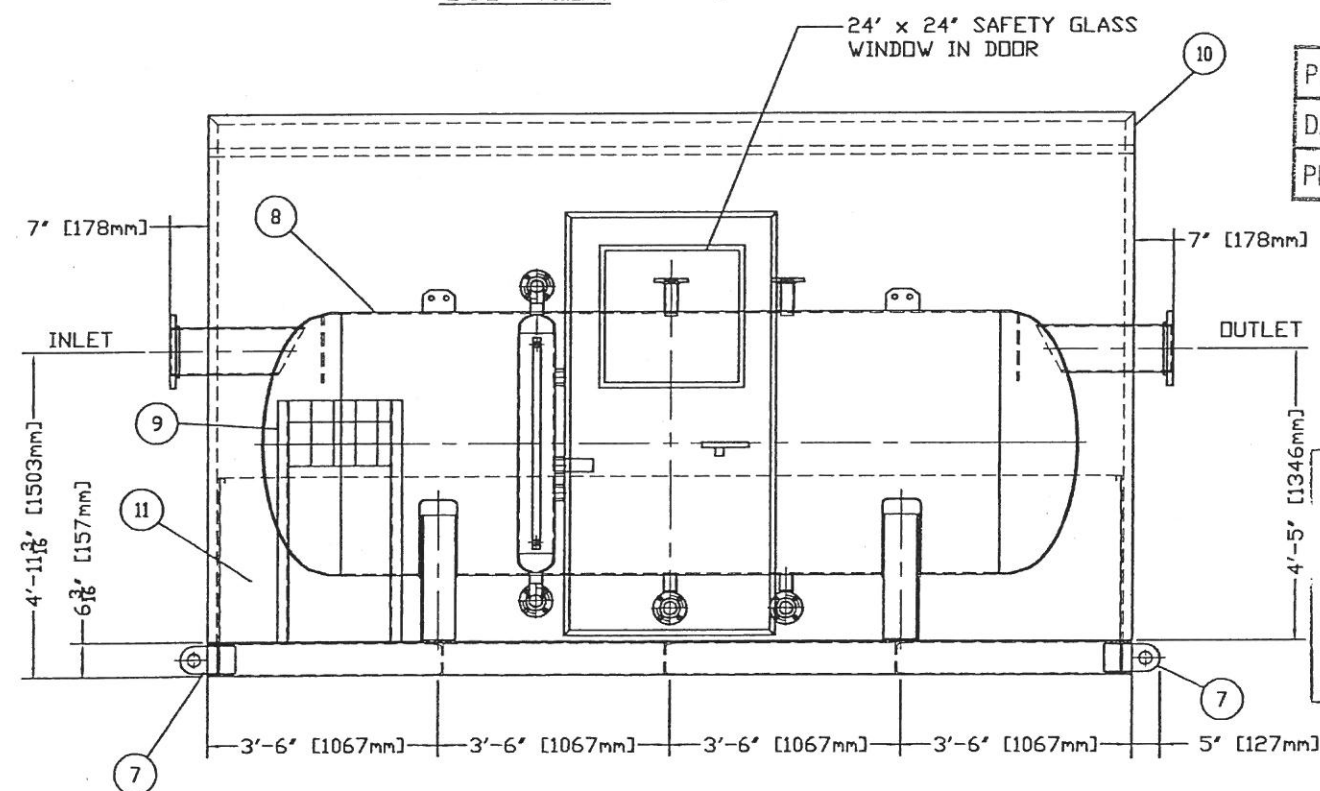
TOP VIEW



SKID LIFTING LUGS (7)

NOTE:
3/16" THK. CHECKER PLATE
SEAL WELDED ON TOP
STITCH WELDED BELOW

| Bill of Materials | | | DESCRIPTION |
|-------------------|-----|--|---|
| No | Qty | | |
| 1 | 2 | | 14'-0" LG. C6 x 8.2 C-CHANNEL (SKID ASSEMBLY) |
| 2 | 5 | | 6'-8" LG. C6 x 8.2 C-CHANNEL (SKID ASSEMBLY) |
| 3 | 2 | | 3'-4 11/16" LG. C6 x 8.2 C-CHANNEL (SKID ASSY.) |
| 4 | 1 | | 3'-3 15/16" LG. C6 x 8.2 C-CHANNEL (SKID ASSY.) |
| 5 | 1 | | 3'-5 11/16" LG. C6 x 8.2 C-CHANNEL (SKID ASSY.) |
| 6 | 1 | | 3/16" THK. x 7' x 14' CHECKER PLATE. |
| 7 | 4 | | 1/2" THK. x 5" WIDE x 10" LG. LIFTING LUGS |
| 8 | 1 | | TTI 04'-0" x 10'-0" LG. SEAM TO SEAM A.G.K.O. |
| 9 | 1 | | 12,000 BTU/HR. SCOTTCAN MODEL CATADYNE FLAMELESS HEATER (24' x 12') c/w 120 VAC START |
| 10 | 1 | | 1 1/2" THK. GALVALUM THERMO PANEL INSULATED BUILDING (WHITE SATIN FINISH) |
| 11 | 1 | | 24" HIGH x 13'-7" LG. x 6'-7" W x 1/8" THK. CONTAINMENT PAN |
| 12 | | | |
| 13 | | | |
| 14 | | | |
| 15 | | | |
| 16 | | | |
| 17 | | | |
| 18 | | | |
| 19 | | | |
| 20 | | | |



SIDE VIEW

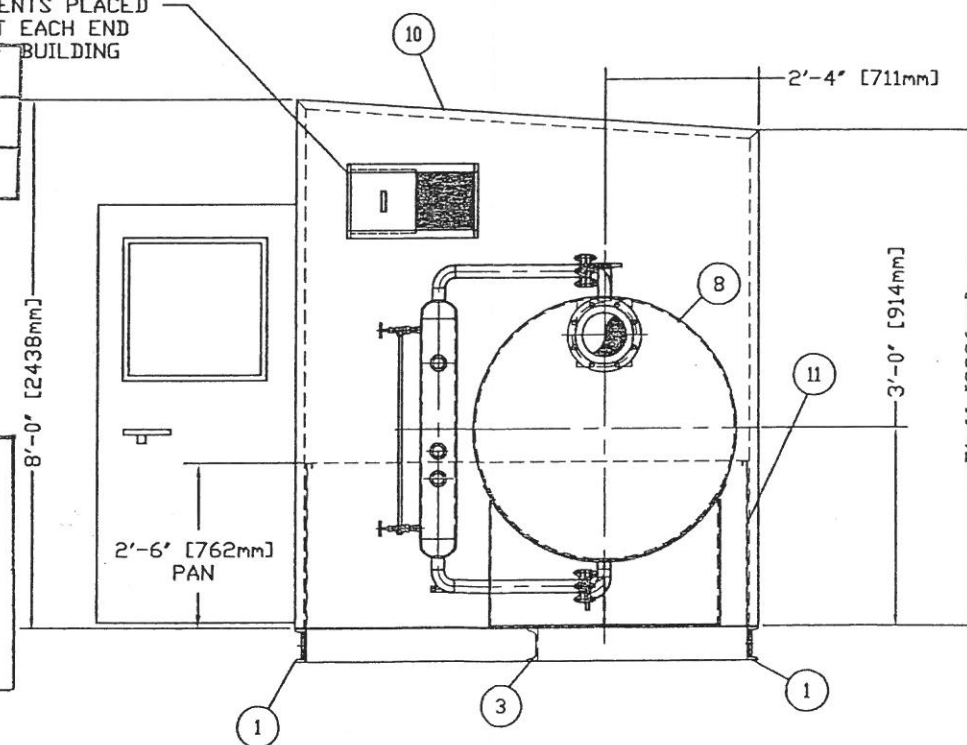
PROJECT NAME:
DATE: Dec 4/06
PROJECT #:

VENDOR TO PROCEED AS NOTED
☐ APPROVED FOR CONSTRUCTION.
☐ APPROVED FOR CONST. AS NOTED
☐ REVISE AND RESUBMIT AS NOTED

SIGNED: _____

DATE: _____

VENTS PLACED
AT EACH END
OF BUILDING



END VIEW

| Rev. | Description | By | Y | M | D |
|------|--|----|----|----|----|
| 0 | ISSUED FOR APPROVAL PURPOSES | EW | 06 | 11 | 28 |
| | UPDATED PART ITEM #10 PER CLIENT REQUEST | EW | 06 | 11 | 30 |

General Notes:

TORNADO TECHNOLOGIES CANADA INC.
Any Technical Data and the Designs Disclosed
Herein are the Exclusive Property of Tornado
Technologies Inc. and/or Contained
the Proprietary Rights of Others and are not to
be used or Disclosed to Others without the Written
Consent of Tornado Technologies Inc.

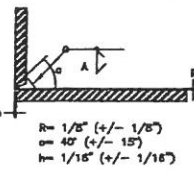
| | |
|--------------------------------------|-------------------------------|
| Tag #: | Design Pressure: 50 PSig |
| Ship To Location: | Hydro Test Pressure: 75 PSig |
| | Operating Pressure: 14.7 PSig |
| Approx. Weight: 6,400 LBS. | Weld Procedure #: #1323.2 |
| Internally Coated with Devco 253: NO | |
| Mag Particle Procedure: NO | |
| Radiography / Xray: NO | |
| Coolant Tracing: NO | |
| Aluminum Cladding: NO | |
| Corrosion Allowance: .0625" | |
| Q.C. Program #: | AQP-1266 |

| | | |
|---------------|------------------------------|---|
| Dwg. By: EMW | DWG#: 06 11 28 | Title: 04'-0" x 10'-0" LG. S/S A.G.K.O. TANK (21 bbl) c/w 08" INLET/OUTLET CONNS. |
| Date: Y M D | Salesperson: JERRY SMOLARSKI | Customer: c/o TUNDEA ENGINEERING ASSOCIATES LTD. |
| JOB#: QUOTE#: | | P.O.#: |
| Sheet 3 of 3 | | ALBERTA |


 PHONE# (403)883-2400
 FAX# (403)883-2550
 TOLL FREE# 1-800-661-4128
 WEB SITE: WWW.TORNADOTECH.NET

NOZZLE SCHEDULE & WELD DETAILS

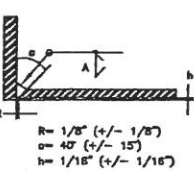
WELD DETAIL #1



Weld Procedure

WP#1

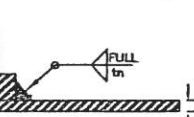
WELD DETAIL #2



Weld Procedure

TM-10

WELD DETAIL #4

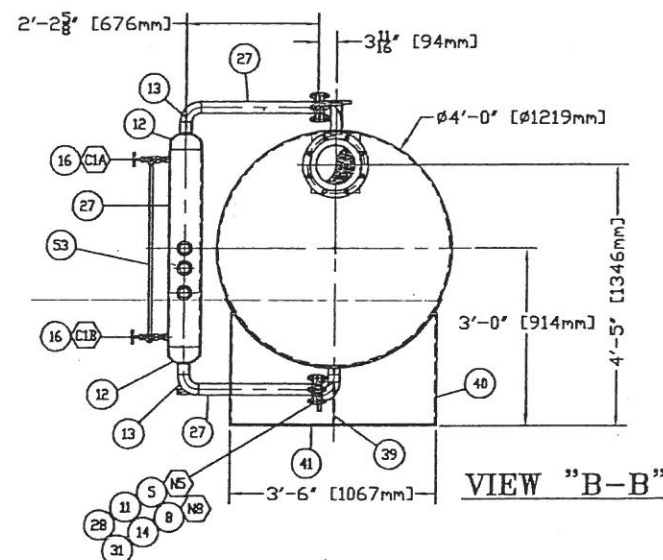
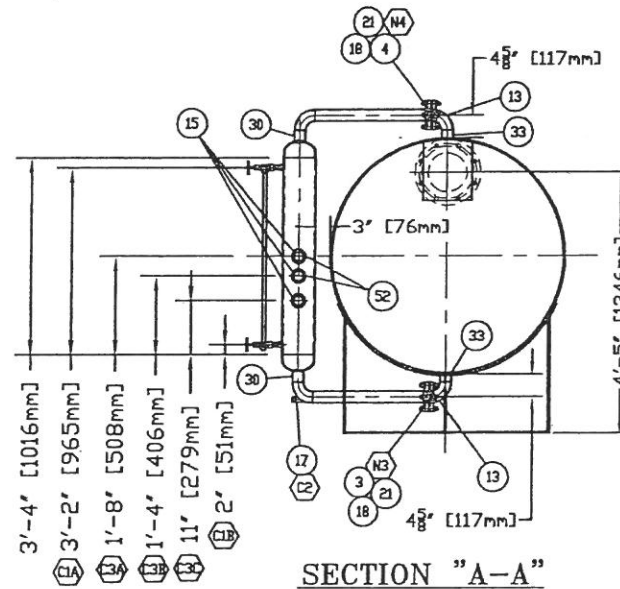
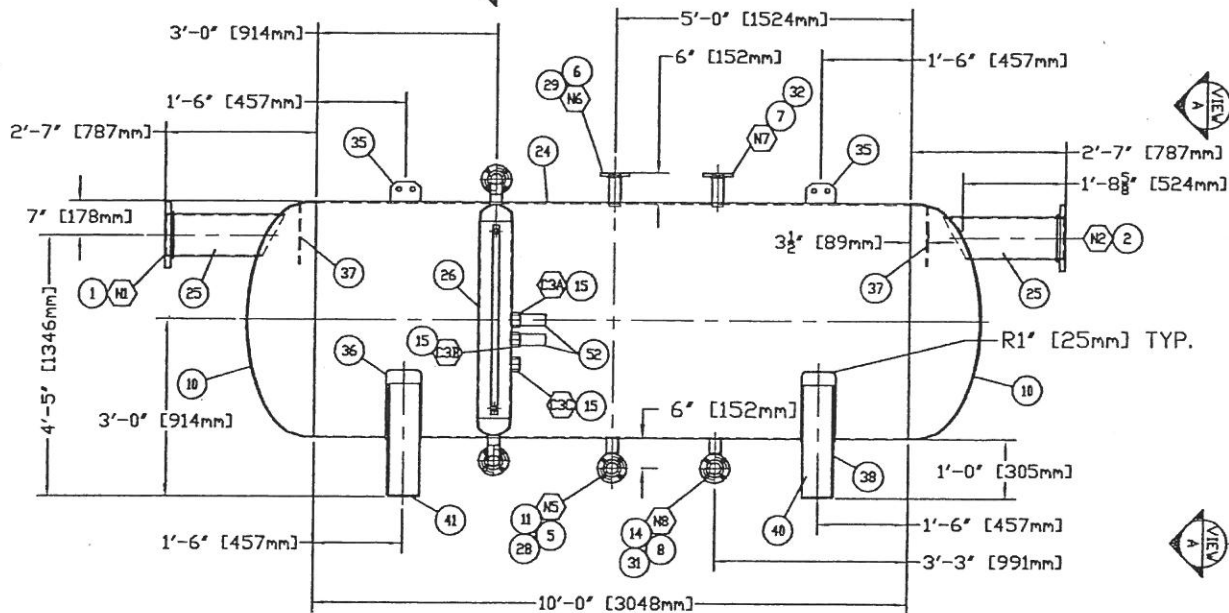
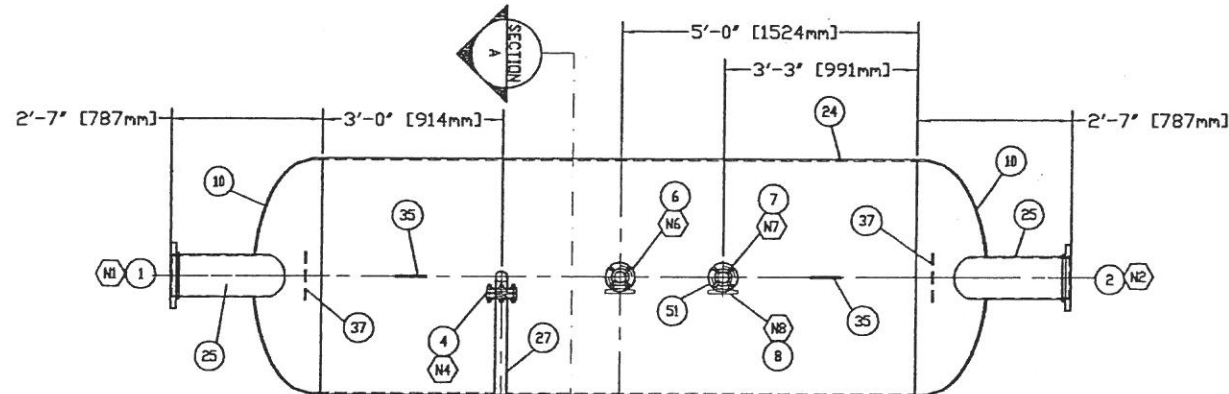


Weld Procedure

TM-1

NOZZLE AND COUPLING SCHEDULE

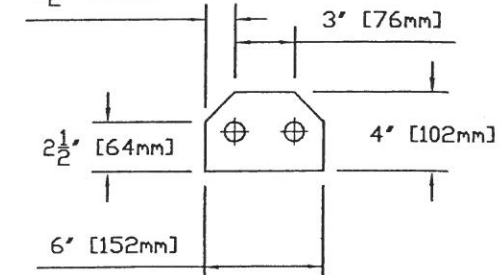
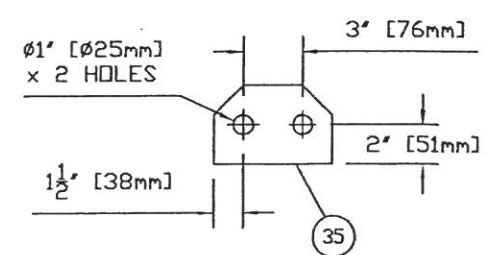
| Mark No. | Qty. | Size | ANSI Rating And Facing | Service | O.D. of Nozzle Neck | | Welding Detail Number | Fillet Weld Size | | | | Bill of Mat'l Item No. | Remarks | Elevation | Orientation Angle |
|----------|------|-----------------|------------------------|-------------------------|---------------------|--------------|-----------------------|------------------|---|---|---|------------------------|---------------|--------------------|-------------------|
| | | | | | Inside | Outside | | A | B | C | D | | | | |
| N1 | 1 | ø8\" [219mm] | SA 105 150# R.F. | INLET CONNECTION | 4 1/2\" [114] | 1\" 20.63" | 4,5 | 3/8" | | | | 1,25 | SLIP ON | 4'-5 1/2\" [1359] | END |
| N2 | 1 | ø8\" [219mm] | SA 105 150# R.F. | OUTLET CONNECTION | 4 1/2\" [114] | 1\" 20.63" | 4,5 | 3/8" | | | | 2,25 | SLIP ON | 4'-5 1/2\" [1359] | END |
| N3 | 1 | ø2\" [60.3mm] | SA 105 150# R.F. | FLOAT BRIDLE CONNECTION | 2 3/8\" [60.3] | 0\" 4 5/8" | 4,5 | 3/8" | | | | 3,27 | SLIP ON | 7 7/16\" [189mm] | BOTTOM |
| N4 | 1 | ø2\" [60.3mm] | SA 105 150# R.F. | FLOAT BRIDLE CONNECTION | 2 3/8\" [60.3] | 1/2\" 4 5/8" | 4,5 | 3/8" | | | | 4,27 | SLIP ON | 5'-4 9/16\" [1640] | TOP |
| N5 | 1 | ø2\" [60.3mm] | SA 105 150# R.F. | DRAIN OUTLET CONNECTION | 2 3/8\" [60.3] | 0\" 6" | 4,5 | 3/8" | | | | 5,11 | SLIP ON | 6\" [152mm] | BOTTOM |
| N6 | 1 | ø2\" [60.3mm] | SA 105 150# R.F. | SPARE CONNECTION | 2 3/8\" [60.3] | 1/2\" 6" | 4,5 | 3/8" | | | | 6,29 | SLIP ON | SEE DRAWING | TOP |
| N7 | 1 | ø2\" [60.3mm] | SA 105 150# R.F. | VENT CONNECTION | 2 3/8\" [60.3] | 1/2\" 6" | 4,5 | 3/8" | | | | 7,32 | SLIP ON | SEE DRAWING | TOP |
| N8 | 1 | ø2\" [60.3mm] | SA 105 150# R.F. | TRUCKOUT CONNECTION | 2 3/8\" [60.3] | 0\" 6" | 4,5 | 3/8" | | | | 8,31 | SLIP ON | 6\" [152mm] | BOTTOM |
| C1A/B | 2 | ø1 1/2\" [38mm] | 3000# NPT | SIGHT GLASS CONNECTION | 1 1/8\" [28mm] | 0\" 0" | 9 | 1/4" | | | | 16 | HALF COUPLING | SEE DRAWING | |
| C2 | 1 | ø1 1/2\" [38mm] | 3000# NPT | FLOAT BRIDLE DRAIN | 1 1/8\" [28mm] | 0\" 0" | 9 | 1/4" | | | | 17 | WELDOLET | SEE DRAWING | |
| C3A-C | 3 | ø2\" [60.3mm] | 3000# NPT | LEVEL CHECK CONNECTION | 3\" [76.2mm] | 0\" 0" | 9 | 1/4" | | | | 15 | HALF COUPLING | SEE DRAWING | |



PROJECT NAME: _____

DATE: Dec 4/06 RS

PROJECT #: _____



LIFTING/HANDLING LUG DETAIL

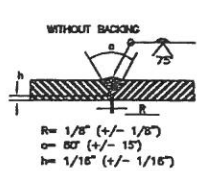
- VENDOR TO PROCEED AS NOTED
- ☐ APPROVED FOR CONSTRUCTION.
- ☐ APPROVED FOR CONST. AS NOTED
- ☐ REVISE AND RESUBMIT AS NOTED

SIGNED: _____

DATE: _____

NOZZLE SCHEDULE & WELD DETAILS

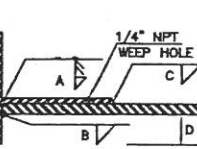
WELD DETAIL #5



Weld Procedure

WP#5

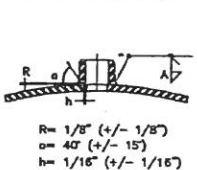
WELD DETAIL #6



Weld Procedure

TM-1

WELD DETAIL #9



Weld Procedure

WP#9

General Notes:

TORNADO TECHNOLOGIES CANADA INC.
Any Technical Data and the Designs Disclosed Herein are the Exclusive Property of Tornado Technologies Inc. and/or Contained the Proprietary Rights of Others and are not to be used or Disclosed to Others without the Written Consent of Tornado Technologies Inc.

| | |
|-----------------------------------|----------------------------|
| Tag #: | |
| Ship To Location: | HARMATTEN CONDENSATE PLANT |
| Approx. Weight: | 2,800 LBS. |
| Internally Coated with Devco 253: | NO |
| Mag Particle Procedure: | NO |
| Radiography / Xray: | NO |
| Coolant Tracing: | NO |
| Aluminum Cladding: | NO |
| Corrosion Allowance: | .0625" |
| Q.C. Program #: | AQP-1266 |

| | |
|----------------------|-----------------|
| Design Pressure: | 50 PSig |
| Hydro Test Pressure: | 75 PSig |
| Operating Pressure: | 14.7 PSig |
| Weld Procedure #: | #1323.2 |
| Salesperson: | JERRY SMOLARSKI |
| JOB#: | QUOTE#: |

| | | | | |
|----------------------------|----|---------|----|--|
| Dwg. By: | | DWG#: | | |
| EMV | | | | |
| Date: | 06 | 11 | 27 | |
| | Y | M | D | |
| Salesperson: | | | | |
| JERRY SMOLARSKI | | | | |
| JOB#: | | QUOTE#: | | |
| | | | | |
| Sheet <u>1</u> of <u>3</u> | | | | |

| | |
|-----------|--|
| Title: | ø4'-0" x 10'-0" LG. S/S A.G.K.O. TANK (21 bbl) c/w ø8" INLET/OUTLET CONNS. |
| Customer: | c/o TUNDRA ENGINEERING ASSOCIATES LTD. |
| P.O.#: | |
| LSB | |
| REV. | |
| ALBERTA | |

TORNADO TECHNOLOGIES CANADA INC.

PHONE# (403)883-2400
FAX# (403)883-2550
TOLL FREE# 1-800-661-4128
WEB SITE: WWW.TORNADOTECH.NET

| Rev. | Description | By | Y | M | D |
|------|---|-----|----|----|----|
| 1 | UPDATED COUPLING C3A PER CLIENT'S REQUEST | EW | 06 | 11 | 30 |
| 0 | ISSUED FOR APPROVAL PURPOSES | EMW | 06 | 11 | 27 |

Bill of Materials

| FLANGES | | | | | | | | | | Heat# |
|-------------------------------|-----|--|---------------------------|--------------------------|---------------------------------|-----------------------------|-------------------------------|------------------------------|--------------------------|-------|
| No | Qty | Size | Sch. | Rating | Face | Type | Material Specification | Remarks | Heat# | |
| 1 | 1 | Ø8"[219] | STD. | 150# | R.F. | S.O. | ANSI SA 105 | N1 - INLET CONNECTION | | |
| 2 | 1 | Ø8"[219] | STD. | 150# | R.F. | S.O. | ANSI SA 105 | N2 - OUTLET CONNECTION | | |
| 3 | 2 | Ø2"[60.3] | 80 | 150# | R.F. | S.O. | ANSI SA 105 | N3 - FLOAT BRIDLE CONNECTION | | |
| 4 | 2 | Ø2"[60.3] | 80 | 150# | R.F. | S.O. | ANSI SA 105 | N4 - FLOAT BRIDLE CONNECTION | | |
| 5 | 1 | Ø2"[60.3] | 80 | 150# | R.F. | S.O. | ANSI SA 105 | N5 - DRAIN OUTLET CONNECTION | | |
| 6 | 1 | Ø2"[60.3] | STD. | 150# | R.F. | S.O. | ANSI SA 105 | N6 - SPARE CONNECTION | | |
| 7 | 1 | Ø2"[60.3] | 80 | 150# | R.F. | S.O. | ANSI SA 105 | N7 - VENT CONNECTION | | |
| 8 | 1 | Ø2"[60.3] | 80 | 150# | R.F. | S.O. | ANSI SA 105 | N8 - TRUCK OUT CONNECTION | | |
| 9 | 1 | Ø2"[60.3] | 80 | 150# | R.F. | BLIND | ANSI SA 105 c/w 2" I.D. THD. | VENT CONNECTION BLIND FLANGE | | |
| WELD FITTINGS | | | | | | | | | | Heat# |
| No | Qty | Size | Sch. | Description | Rating | Ends | Material Specification | Remarks | Heat# | |
| 10 | 2 | 48"[1219] | 3/8" | 2:1 S.E. HEADS | | | SA 516 GR70 | VESSEL HEADS | | |
| 11 | 1 | Ø2"[60.3] | 80 | 90° WELD ELL | | | SA 234 WPB | N5 - DRAIN OUTLET CONNECTION | | |
| 12 | 2 | Ø6"[168] | STD. | END CAPS | | | SA 234 WPB | FLOAT BRIDLE CONTAINER | | |
| 13 | 4 | Ø2"[60.3] | 80 | 90° WELD ELLS | | | SA 234 WPB | FLOAT BRIDLE INLETS | | |
| 14 | 1 | Ø2"[60.3] | 80 | 90° WELD ELL | | | SA 234 WPB | N8 - TRUCK OUT CONNECTION | | |
| COUPLINGS | | | | | | | | | | Heat# |
| No | Qty | Size | Description | Rating | Ends | Material Specification | Remarks | Heat# | | |
| 15 | 3 | Ø2"[60.3] | HALF COUPLING | 3000# | NPT | SA 105 | C3A/B/C - LEVEL CHECK CONN. | | | |
| 16 | 2 | Ø1/2"[13] | HALF COUPLING | 3000# | NPT | SA 105 | C1A/B - SIGHT GLASS CONN. | | | |
| 17 | 1 | Ø1/2"[13] | WELD OLET | 3000# | NPT | SA 105 | C2 - FLOAT BRIDLE DRAIN CONN. | | | |
| GASKETS | | | | | | | | | | Heat# |
| No | Qty | Size | Thickness | Rating | Description | Specification/Material | Remarks | Heat# | | |
| 18 | 2 | Ø2"[60.3] | 1/8" | 150# | FLEXITALIC | NON-ASBESTOS | FLOAT BRIDLE CONNECTIONS | | | |
| 19 | | | | | | | | | | |
| 20 | | | | | | | | | | |
| STUD BOLTS C/W 2 HKX NUTS/EA | | | | | | | | | | Heat# |
| No | Qty | NO/SET | Sets | Diameter | Length | Bolt Spec. | Nut Spec. | Match Item | Remarks | |
| 21 | 8 | 4 | 2 | 5/8"[16] | 4"[102] | SA193 B7M | SA194 2HM | 3,4,18 | FLOAT BRIDLE CONNECTIONS | |
| 22 | | | | | | | | | | |
| 23 | | | | | | | | | | |
| PIPE | | | | | | | | | | Heat# |
| No | Qty | Size | Type | Sch. | Material Specification | Remarks | Heat# | | | |
| 24 | 1 | Ø4"-0"[1219] | ROLLED | 3/8" | SA 516 GR70 x 10'-0"[3048] LG. | KNOCKOUT SHELL | | | | |
| 25 | 2 | Ø6"[168] | SMLS | STD. | SA 106B x 1'-11 1/4"[590mm] LG. | N1/N2 - INLET/OUTLET CONNS. | | | | |
| 26 | 1 | Ø6"[168] | SMLS | STD. | SA 106B x 3'-4"[1016mm] LG. | FLOAT BRIDLE CONTAINER | | | | |
| 27 | 2 | Ø2"[60.3] | SMLS | 80 | SA 106B x 1'-11"[584mm] LG. | FLOAT BRIDLE INLET/OUTLET | | | | |
| 28 | 1 | Ø2"[60.3] | SMLS | 80 | SA 106B x 3 3/8"[86mm] LG. | N5 - DRAIN OUTLET EXT. | | | | |
| 29 | 1 | Ø2"[60.3] | SMLS | STD. | SA 106B x 6 1/4"[159mm] LG. | N6 - SPARE NOZZLE EXT. | | | | |
| 30 | 2 | Ø2"[60.3] | SMLS | 80 | SA 106B x 2 5/8"[66.7mm] LG. | FLOAT BRIDLE INLET/OUTLET | | | | |
| 31 | 1 | Ø2"[60.3] | SMLS | 80 | SA 106B x 3 3/8"[86mm] LG. | N8 - TRUCK OUT EXT. | | | | |
| 32 | 1 | Ø2"[60.3] | SMLS | 80 | SA 106B x 6 1/4"[159mm] LG. | N7 - VENT OUTLET EXT. | | | | |
| 33 | 2 | Ø2"[60.3] | SMLS | 80 | SA 106B x 2"[50.8mm] LG. | FLOAT BRIDLE INLET/OUTLET | | | | |
| 34 | | | | | | | | | | |
| PLATE | | | | | | | | | | Heat# |
| No | Qty | Size | Material Specification | Remarks | Heat# | | | | | |
| 35 | 2 | 8" x 4" [152 x 102] | 1/2" THK. SA 36 CS PLATE | LIFTING/HANDLING LUG | | | | | | |
| 36 | 2 | 7" WIDE x 4'-6" LG. | 3/8" THK. SA 36 CS PLATE | VESSEL SUPPORT REPAD | | | | | | |
| 37 | 2 | 10" x 8" [254 x 203] | 3/8" THK. SA 36 CS PLATE | INLET/OUTLET DEFLECTORS | | | | | | |
| 38 | 2 | 42" x 22 11/16" (SHAPE TO VESSEL) | 3/8" THK. SA 36 CS PLATE | VESSEL STAND SIDE COVERS | | | | | | |
| 39 | 2 | 11 1/4" LG. x 6"W [286 x 152] | 3/8" THK. SA 36 CS PLATE | VESSEL STAND STIFFENER | | | | | | |
| 40 | 4 | 22 11/16" LG. x 6"W [576 x 152] | 3/8" THK. SA 36 CS PLATE | VESSEL STAND END PLATES | | | | | | |
| 41 | 2 | 42" LG. x 6"W [1067 x 152] | 3/8" THK. SA 36 CS PLATE | VESSEL STAND BASES | | | | | | |
| 42 | | | | | | | | | | |
| 43 | | | | | | | | | | |
| 44 | | | | | | | | | | |
| 45 | | | | | | | | | | |
| 46 | | | | | | | | | | |
| 47 | | | | | | | | | | |
| 48 | | | | | | | | | | |
| 49 | | | | | | | | | | |
| 50 | | | | | | | | | | |
| IGNITION SYSTEM / MISC. PARTS | | | | | | | | | | Heat# |
| No | Qty | Description | Remarks | Heat# | | | | | | |
| 51 | | | | | | | | | | |
| 52 | 2 | Ø2" LINC 120 V.A.C. ELECTRIC LEVEL SWITCH WITH MANUAL OVERRIDE | LEVEL SWITCH | | | | | | | |
| 53 | 1 | FLOAT BRIDLE NPT SIGHT GLASS c/w ISOLATING VALVE SET | C1A,B - SIGHT GLASS ASSY. | | | | | | | |
| 54 | | | | | | | | | | |
| 55 | | | | | | | | | | |
| 56 | | | | | | | | | | |
| 57 | | | | | | | | | | |
| 58 | | | | | | | | | | |
| 59 | | | | | | | | | | |
| 60 | | | | | | | | | | |
| 61 | | | | | | | | | | |
| 62 | | | | | | | | | | |
| 63 | | | | | | | | | | |