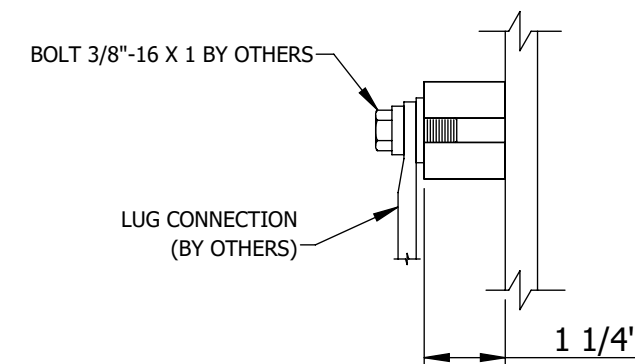


CONNECTION LEGEND

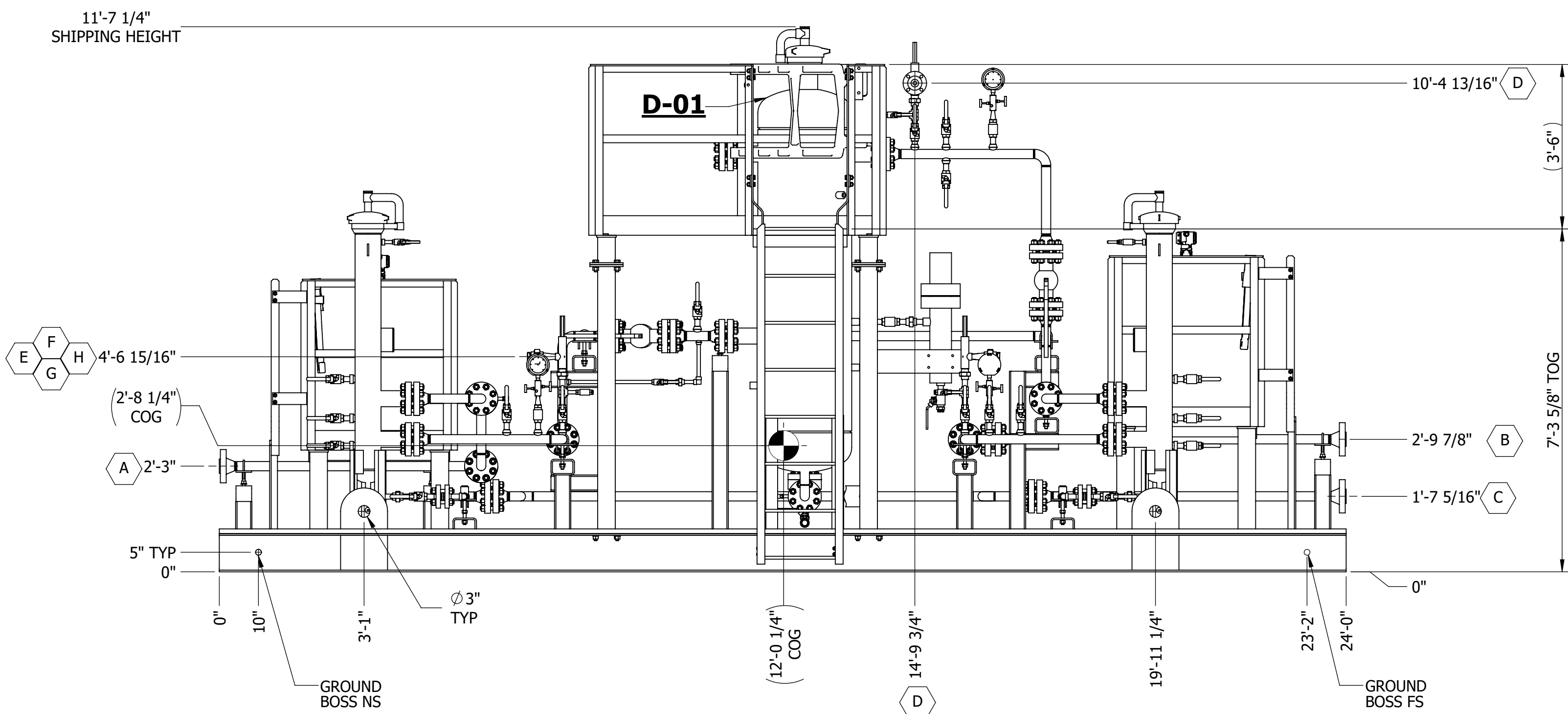
- A INLET
2" 900# RF FLANGE
- B OUTLET
2" 900# RF FLANGE
- C DRAIN
2" 900# FLANGE
- D D-01 PSV CONNECTION
2" 150# FLANGE
- E H AF-01/02;PF-01/02 PSV CONNECTION
1 1/2" FNPT

APPROX WEIGHT FULL: 20,000 LBS

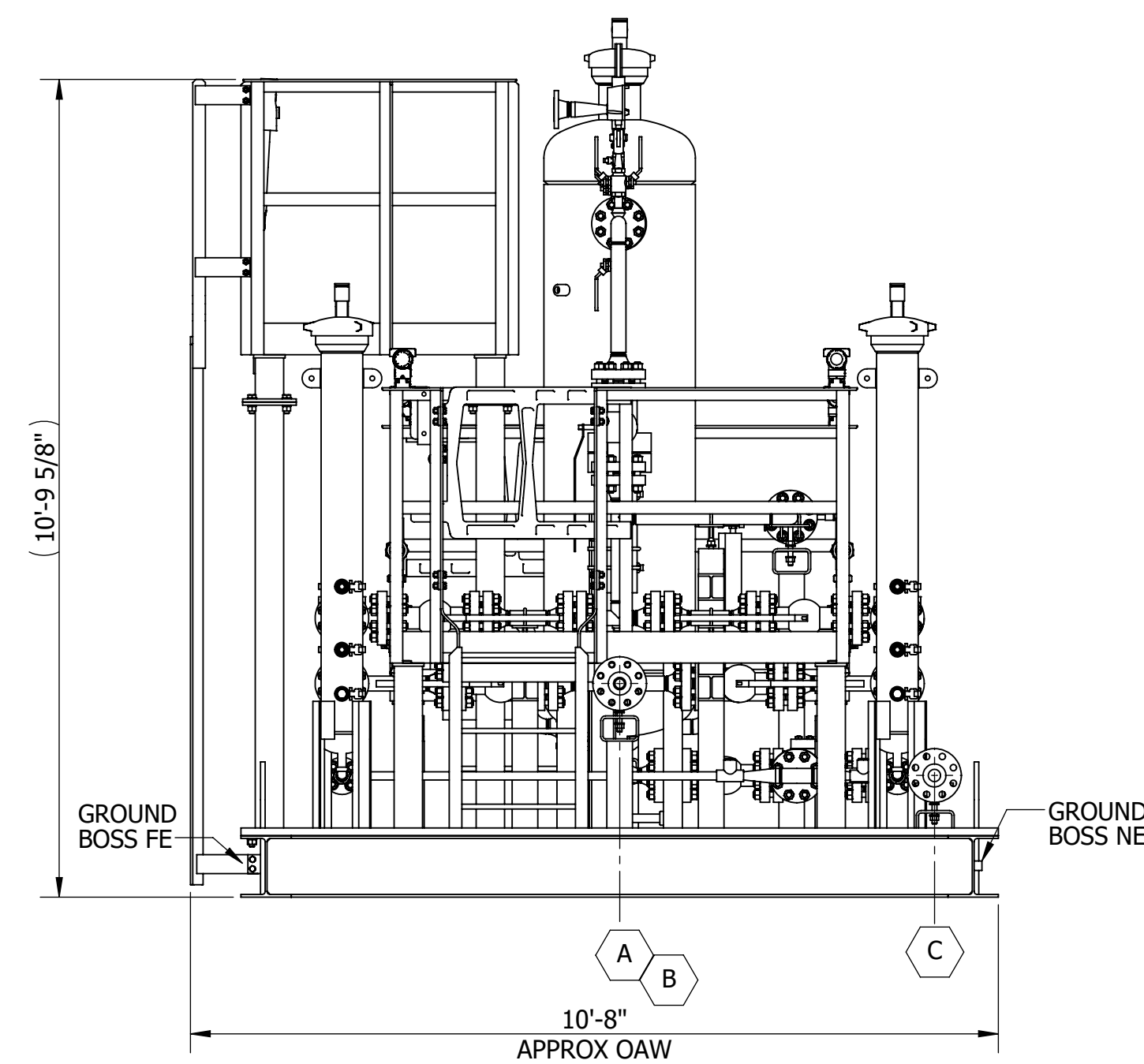
APPROX HYDROTEST
VOLUME = 40 CU FT = 300 GAL



GROUND BOSS DETAIL
(2 PLC'S)



ELEVATION VIEW





ELEVATION VIEW

GENERAL NOTES:

1. ALL FLANGES TO HAVE BOLT HOLES STRADDLING TRUE CENTERLINES.
2. ALL CONNECTIONS TO BE PROTECTED BEFORE SHIPPING.
3. ALL PIPING TO BE CONSTRUCTED AND TESTED IN ACCORDANCE WITH ASME B31.8.
4. ALL STRUCTURAL STEEL TO BE DESIGNED IN ACCORDANCE WITH AISC STANDARDS.
5. SURFACE PREPARATION AND COATING SPECIFIED IN PAINT MATRIX.
6. PRELIMINARY ARRANGEMENT FOR APPROVAL. GASTECH SUPPLIED CANOPY TO BE ADDED. CANOPY IS CUSTOMER ASSEMBLED.

GENERAL NOTES:

0	07/23/2021	RAJ	JT	DN	ISSUED FOR FABRICATION
B	07/06/2021	BWM	JT	DN	ISSUED FOR APPROVAL
A	06/01/2021	BWM	JT	DN	ISSUED FOR APPROVAL
REV.	DATE	BY	CHKD	APPD	DESCRIPTION

			REVISION HISTORY						
DRAWING APPROVALS			 2110 INDUSTRIAL ROAD SAPULPA, OK 74066 (918) 663-8383						
INITIALS		DATE							
DRAWN	BWM	05/25/2021							
CHECKED	JT	05/28/2021							
APPROVED	DN	06/01/2021		TITLE					
THIRD ANGLE PROJECTION			GENERAL ARRANGEMENT						
 DIMENSIONS ARE IN INCHES WITH TOLERANCES $\pm 1/8"$ UNLESS OTHERWISE NOTED			SIZE	JOB NUMBER	DRAWING NO.		REV		
			D	50005	50005-200		0		
			PO#	3100061695			SHEET	1 OF 3	