

4



DATE APR 04 1995

כ

1

4

(x)

WALL INTERIOR LINER	: 24 GAUGE BONE WHITE
WALL EXTERIOR LINER	: 22 GAUGE BONE WHITE
ROOF INTERIOR LINER	: 24 GAUGE BONE WHITE
ROOF EXTERIOR LINER	: 22 GAUGE BONE WHITE
TRIM	: DOFASCO RED QC250
COOLER	: PRIMED ONLY
EQUIPMENT	: RUSTOLEUM 906 GREY (STANDARD)
SKID	: RUSTOLEUM 906 GREY (STANDARD)
GRATING	: BLACK (STANDARD)
ENGINE/COMPRESSOR	: WAUKESHA ORANGE

WIDTH	:	23'-0"
LENGTH	:	34'-0"
EAVE HEIGHT	:	13'-0"
ROOF SLOPE	:	4:12

MAKE NO REVISIONS
TO THIS REPRODUCIBLE

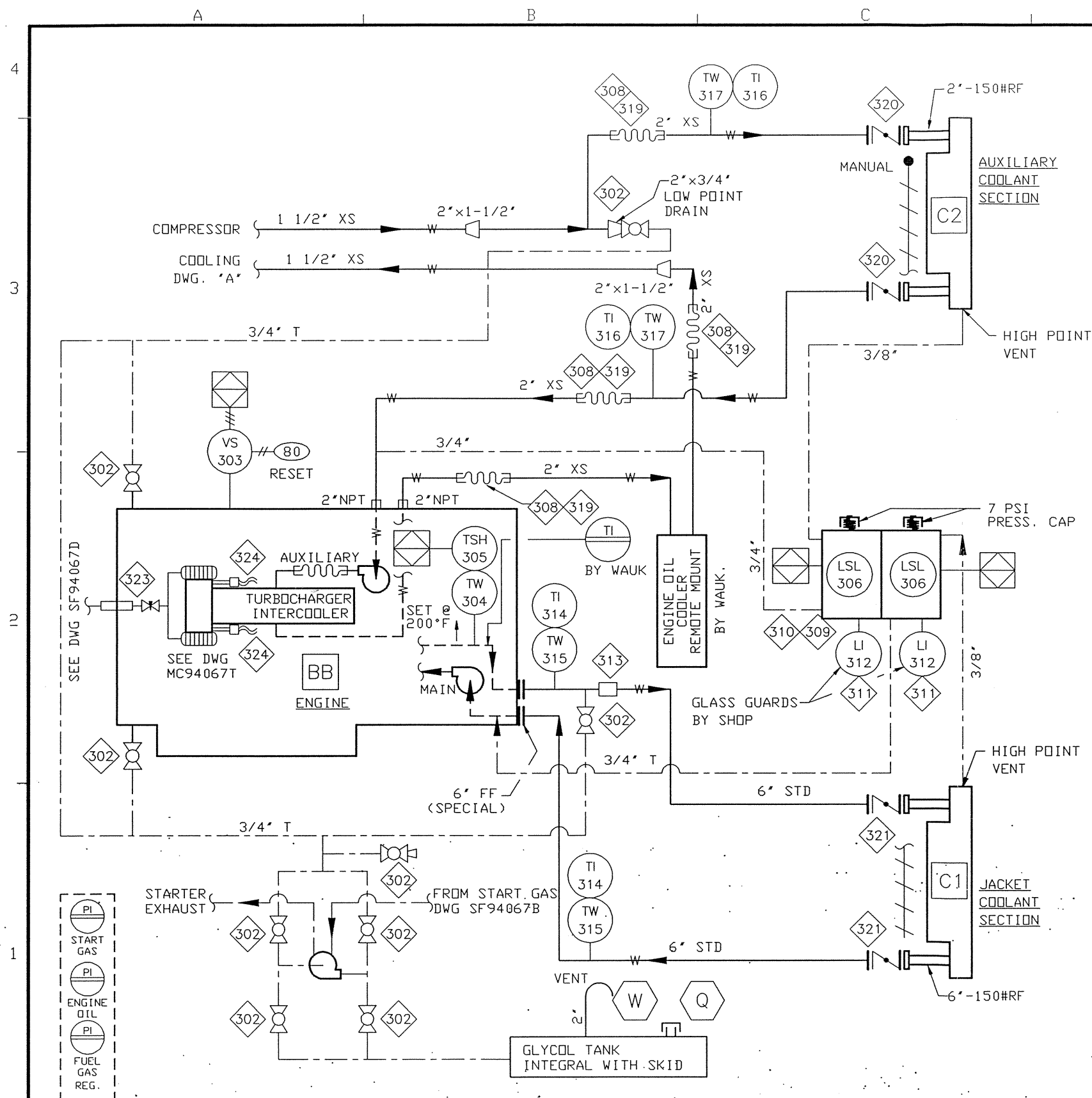
AE

Q

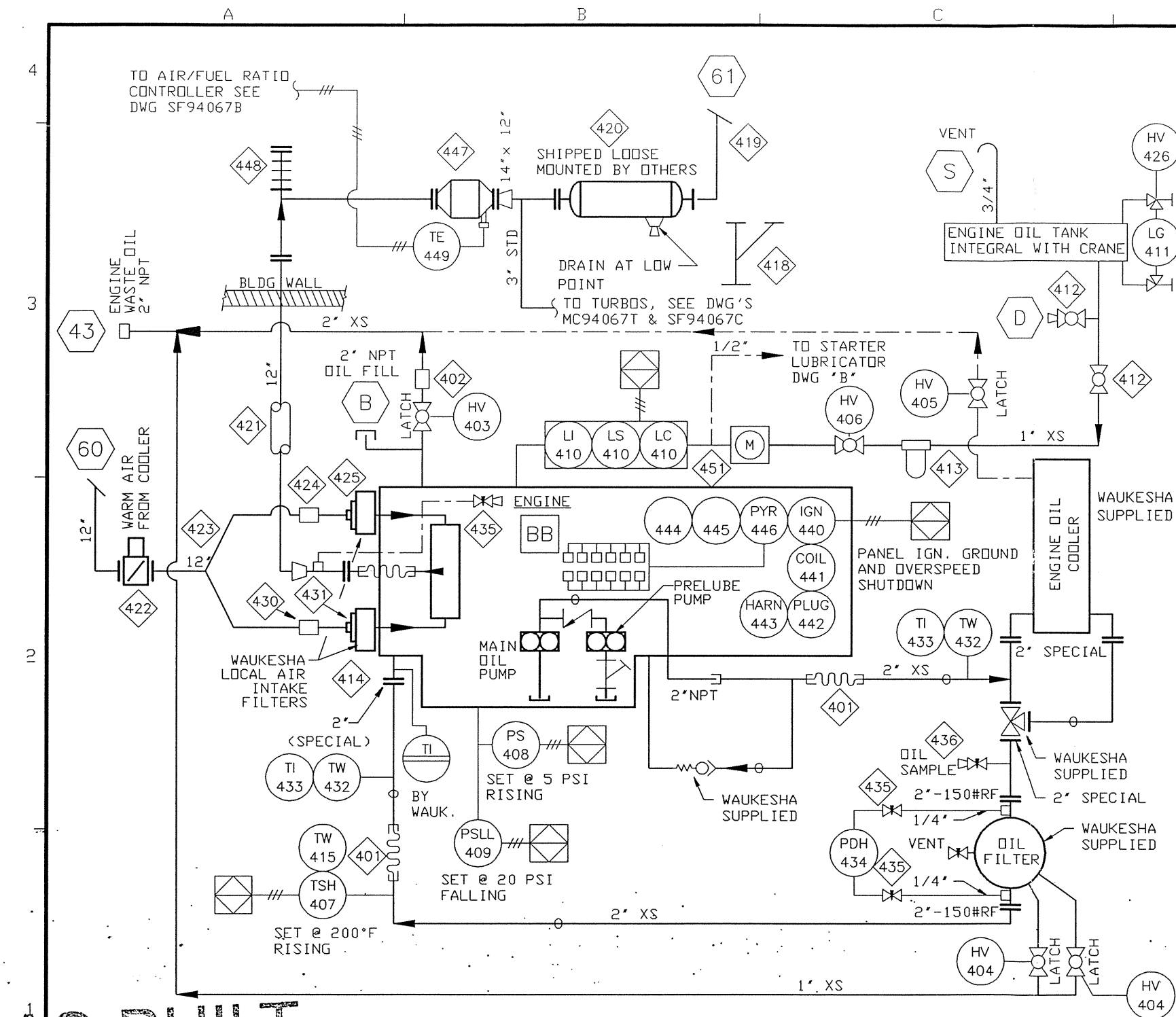
I

E

F

[illegible]

FILENAME:	ISSUE#:	<div>Enerflex Systems Ltd.</div>	CUSTOMER:				ORIG DWN BY: D. DUCK	TITLE: COOLING SYSTEM SCHEMATIC		
			PINNACLE RESOURCES LTD.	2	AS BUILT	DRD	95-03-27	DATE: 94-10-20	ENGINE EQUIPMENT & CONTROLS	
				1	FOR CONSTRUCTION	KJB	94-11-08	APPR'D BY: [Signature]	WAUKESHA L-VHP-GSI SERIES	
LAST DRAWING SAVE DATE:				0	FOR APPROVAL	DRD	94-10-20	DATE: 94-10-20	DWG. SF94067C	OPER'N #: 24
94/11/08 07:20			JOB No.: 94067	Rev.	Description	By	Date			



AS-BUILT

DATE APR 04 1995

ENGINE EQUIPMENT AND CONTROLS - OIL, IGNITION, AIR, EXHAUST

CAD
MAKE NO REVISIONS
TO THIS REPRODUCIBLE

BILL OF MATERIAL

ITEM	QTY.	CODE No.	DESCRIPTION
401	2	BBH-2012	BRAIDED STEEL HOSE, 2" NPTM ENDS, 12" LONG
402	1	BDR-C20	SLEEVE COUPLING, 2" DRESSER STYLE 90 STRAIGHT
403	1	BNI-T5620	BALL VALVE, NPT NIBCO T560-CS R-25 2" RP WI LATCHING HANDLE
404	2	BNI-T5610	BALL VALVE, NIBCO T560-CS-R-25 1" WI LATCHING HANDLE
405	1	BNI-T5604	BALL VALVE, NIBCO T560-CS-R-25 1/2" WI LATCHING HANDLE
406	1	BGR-391104	BALL VALVE, GRINNELL 1/2" NPT, FIG 3911, 2000 WDG, RP, CS
407	1	BTE-69TU147	TEMP SW, CCS, 6900TU14-7001 GP 80-205R, 60-198F, SS, 10' CAP
408	1	BTE-604GZJ1	PRES SW, CCS 604GZJ-1, 500 MWP .8-18R, .3-17.5F, GP, SS
409	1	BTE-69GZ14	PRES SW, CCS 6900GZ14, 500 MWP 9-75R, 3-69F, GP, SS
410	1	BKE-LCE17	LEVEL CONTROLLER WI SWITCH, KENCO LCE-17 CSA XP
411	1	XSIGHTGLASS	GAUGE GLASS, CLEAR ACRYLIC TUBING, BY SH&P
412	2	BGR-391110	BALL VALVE, GRINNELL, 1" NPT, FIG 3911, 2000# WDG, CS, RP
413	1	BBA-BF914	GAS FILTER, BALDWIN BF914 1" NPT WI BF915 ELEMENT
415	1	BTE-TW7525	T'WELL, CCS 3/4", 2 1/2" U, 304SS # 6509TW34025204 C/W 2" T LAG
416	1	BRE-MRM	SLOW FLOW METER, REN MRM (METRIC)
418	1	XMUFLERSTAN	AIR EXHAUST MUFLER STAND PER DWG MC94067B
419	1	XSTACK	EXHAUST STACK 1.5 X BLDG HEIGHT AS MANUFACTURED BY ESL
420	1	BSI-JAT14EE	MUFLER, SILEX JAT14 RES GR END IN/OUT 14"-150#
421	1	BEX-CF	EXH INS, ALUM CLAD CERAM FIBRE BATT WI GALV LNR & AIR RINGS
422	1	BEN-WAS12	WARM AIR SELECTOR, 12" PER DWG MC94067A
423	1	BLS-YM1012	AIR LINE Y-MANIFOLD, 16 G ST 10" D. IN/12" D. OUT
424	2	BDD-P11H10	RUBBER HOSE CONN, DONALDSON P11-1414, 10" STRAIGHT
425	2	BLS-AFA3T10	AIR FILTER ADAPTOR 16 G ST FOR FLVHP 'GL', 10" D.D.
426	1	BJE-170	SET GAUGE VALVE JERGUSON-#170 1/2" NPT., CS, NACE
432	2	BTW-062	THERMOWELL, 1/2" X 3/4" NPTM X 2-1/2" LONG 304SS U = 1"
433	2	BTR-30251	TI, TREND 33025 2-1/2" STEM BM 3" D DUAL 0-250 DEG. F
434	1	BMI-AA30	DIFF PRES GAUGE, MID-WEST 120-AA-10-50-30, 0-30 PSID
435	3	BWH-2NVS	NEEDLE VALVE, WHITEY S-1VS4, 1/4" TBG CS
436	1	NPN3-8806	NEEDLE VALVE, CENTURY MODEL CM2-3-M22T-B-16, 1/4" F X 1/4" M
440	1	ZNPN-CEC	ALTRONIC CEC IGNITION 24 VDC CLASS 1, DIV 1, (BY WAUKESHA)
441	12	BAL-VHP	COILS, ALTRONIC 591-011B (BY WAUKESHA)
442	12	BCH-VHP	SPARK PLUGS, CHAMPION, RTM77N (BY WAUKESHA)
443	1	BPA-VHPF	HARNESS, PAMCO, C1WVHP-3 FOR WAUKESHA 6VHP ENGINE
444	12	BDM-2Q07	THERMOCOUPLE, 2007-1-k 12/16 cyl SS ADAPT. FOR WAUK VHP G & GS
445	1	BWH-LGL25	PYRO HARNESS, 13 POINT FOR L-SERIES GL, 25' LEADS
446	1	BDY-TMP10014	PYROMETER, DYNALCO TMP 100-14, 19 POINT, TYPE K T'COUPLE
447	1	NPN	CATALYTIC CONVERTER SYSTEM, MECHANICAL EQUIP MODEL 337-1 (BY PAMCO)
448	1	NPN	EXPLOSION PROOF RELIEF, MEI 12H-000 12" (BY PAMCO)
449	1	NPN	THERMOCOUPLE #PAMK49TC (BY PAMCO)

LAST DRAWING SAVE DATE:
94/11/08 07:27

Enerflex
Systems Ltd.

CUSTOMER:

PINNACLE RESOURCES LTD.

JOB No.: 94067

2

1

0

Rev.

AS BUILT

FOR CONSTRUCTION

FOR APPROVAL

Description

DRO

KJB

DRO

By

95-03-27

94-11-08

94-10-20

Date

DWN BY: D. OBUCK

DATE: 94-10-20

CHK'D BY: [Signature]

DATE: 94-10-20

TITLE:

STANDARD SCHEMATIC
ENGINE EQUIPMENT AND CONTROLS
WAUKESHA L SERIES VHP-GL: OIL, IGNITION, AIR, EXHAUST

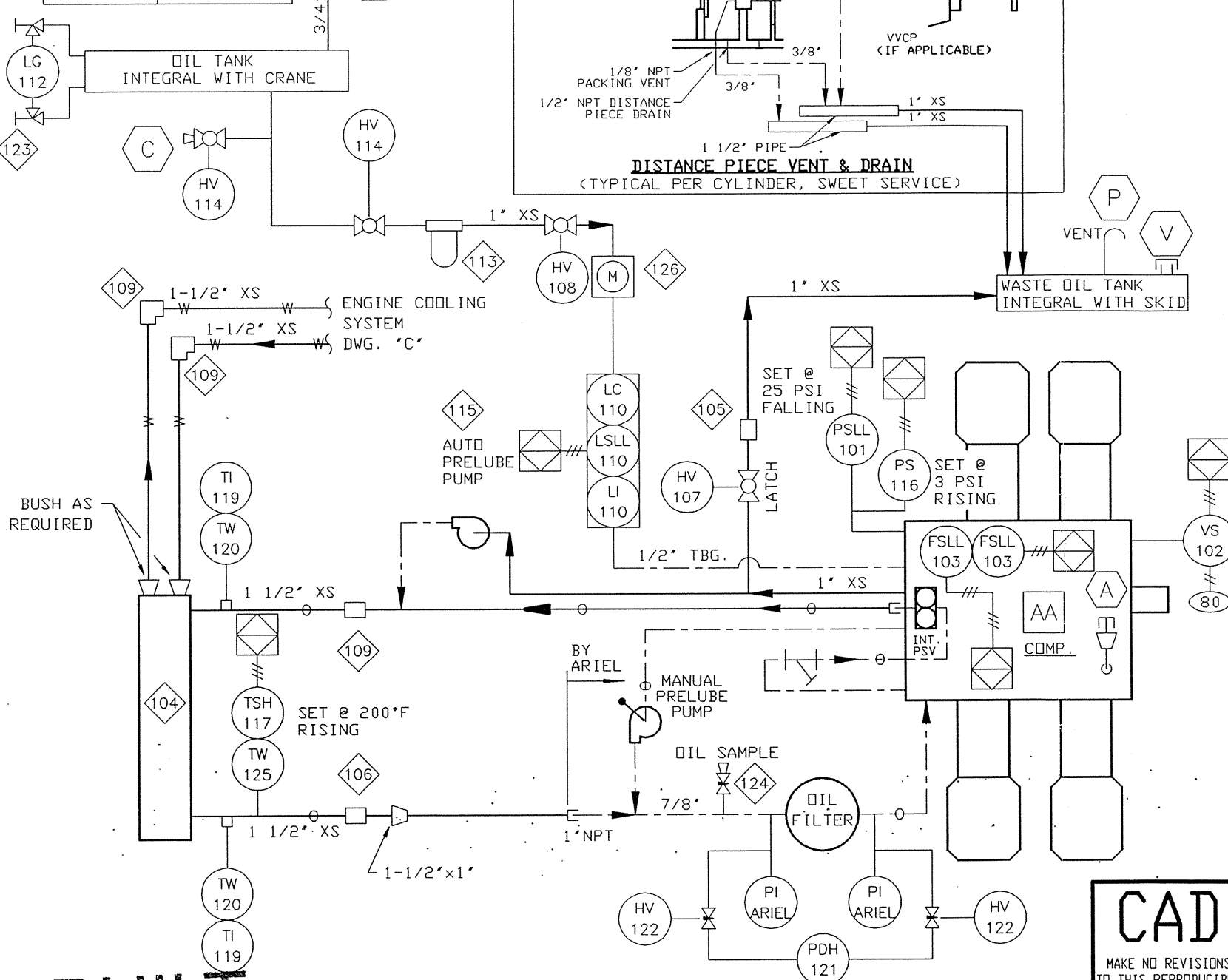
DWG.

SF94067D

REV 0P26

1. SEE THE GENERAL ARRANGEMENT DRAWING FOR THE CORRECT CYLINDER ORIENTATION.

OIL CAP.	155 L
OIL FLOW	95 L/min.



MAKE NO REVISIONS
TO THIS REPRODUCIBLE

[illegible]

AS-BUILT
DATE: APR 04 1995

COMPRESSOR EQUIPMENT AND CONTROLS

Enerflex
Systems Ltd.

CUSTOMER:

PINNACLE RESOURCES LTD.

JOB No.:	94067
----------	-------

LAST DRAWING SAVE DATE:
94/11/07 07:51

3	AS BUILT	DRO	95-03-2
2	REVISED OIL COOLER FROM K-712	DRO	95-02-1
1	FOR CONSTRUCTION	DRO	94-11-0
0	FOR APPROVAL	DRO	94-10-2
Rev.	Description	By	Date

DWN. BY: D. OBUCK
DATE: 94-10-20
CHK'D BY: [Signature]
DATE: 12/04/02

TITLE: STANDARD SCHEMATIC
COMPRESSOR EQUIPMENT AND CONTROLS:
ARIEL JGK/4

DWG.	SF94067A
------	----------

REV. 0P20

