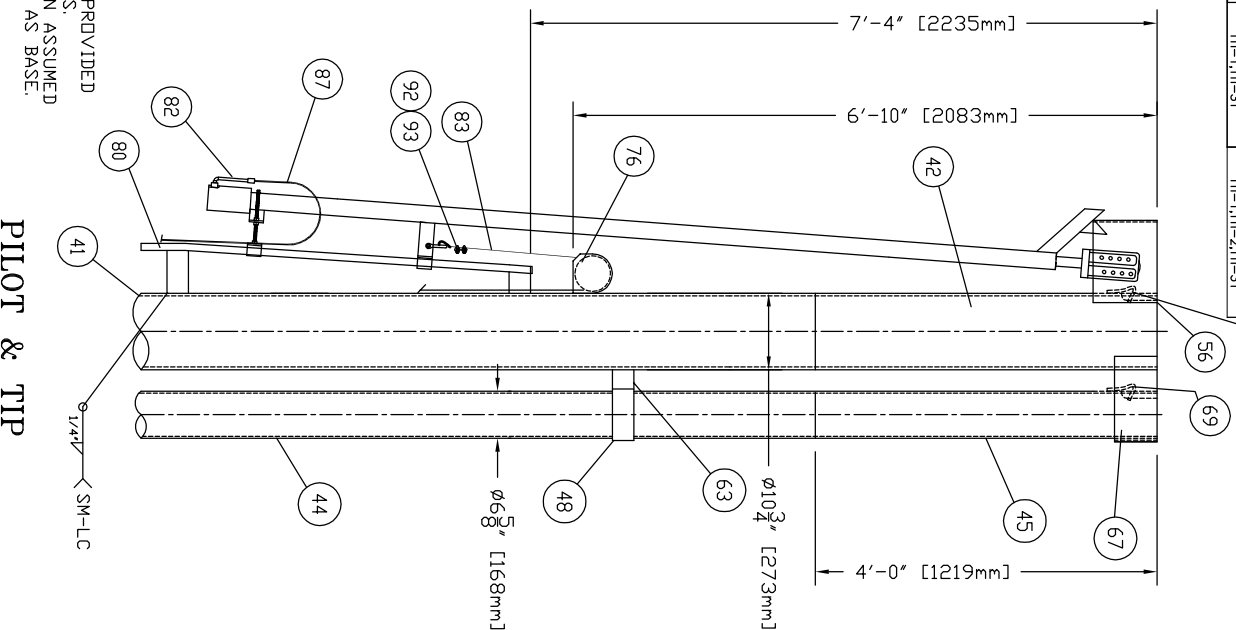
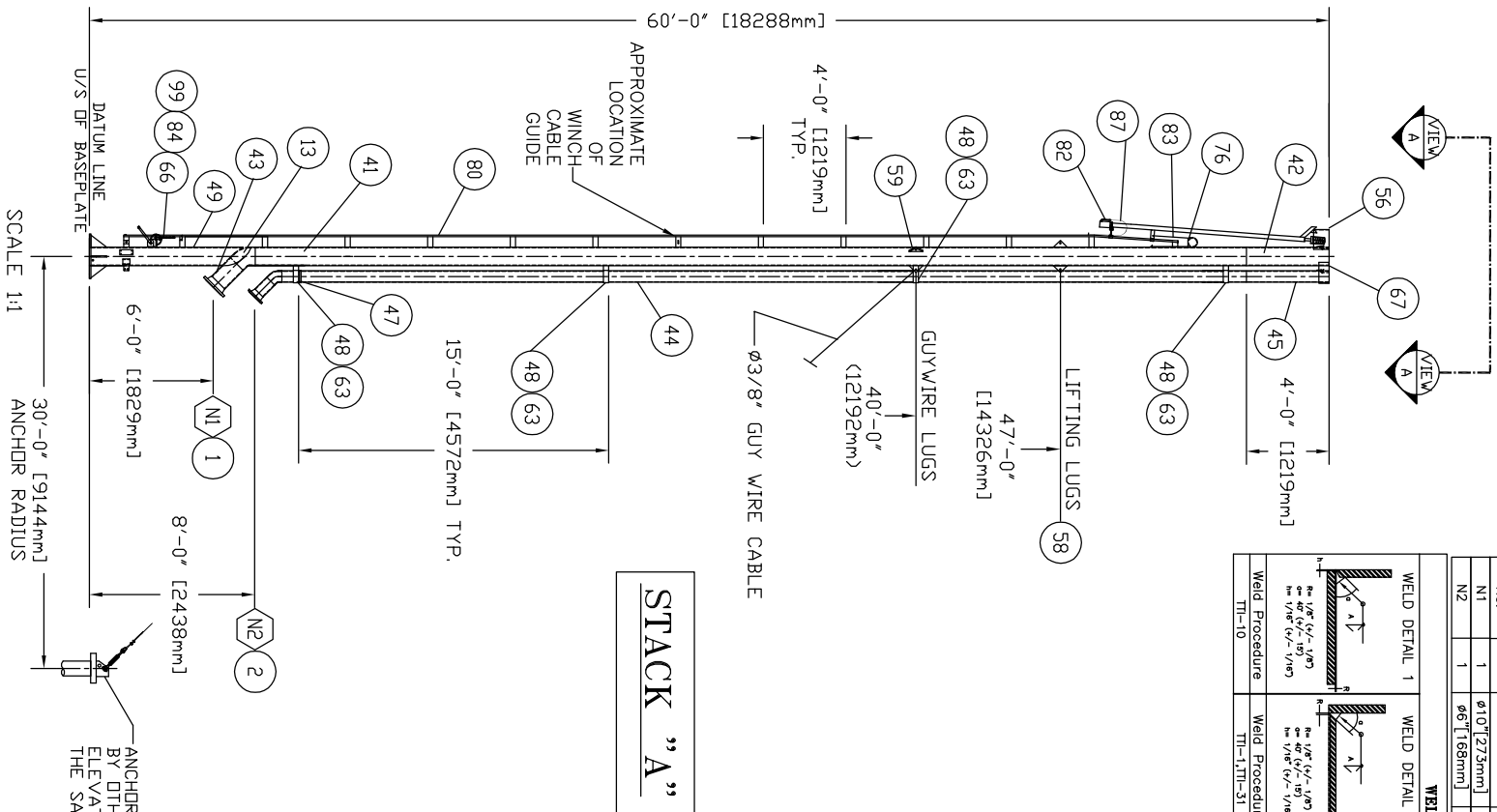


## NOZZLE & COUPLING SCHEDULE

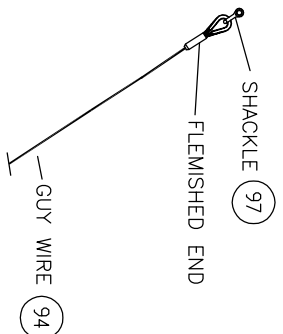
Mark No.	Qty.	Size	Material	Rating	Service	Flillet Weld Size				Description	Elevation	Orientation Angle
						Projection Inside	Welding Detail Number	A	B			
N1	1	ø10[12,7mm]	SA 105N	150#	H.P. FLARE GAS INLET CONNECTION	0"	18"	2,3	3/8"	R.F. WELD NECK	6--0[1,828mm]	90°
N2	1	ø6[1,68mm]	SA 105N	150#	L.P. FLARE GAS INLET CONNECTION	0"	12"	2,3	3/8"	R.F. WELD NECK	8--0[2,438mm]	90°

WELD DETAILS				
WELD DETAIL 1		Weld Procedure TM-10	WELD DETAIL 2	
WELD DETAIL 3		Weld Procedure TM-1, TM-31	WELD DETAIL 5	



## GUYWIRE LUG CONNECTIONS

ONE - 5/8" G2130 SCREW PIN SAFETY SHACKLE  
ONE - 3/8" 6 x 26 GALVANIZED IRWC CABLE F.O.E.  
(TYP. 3 SETS TOP)

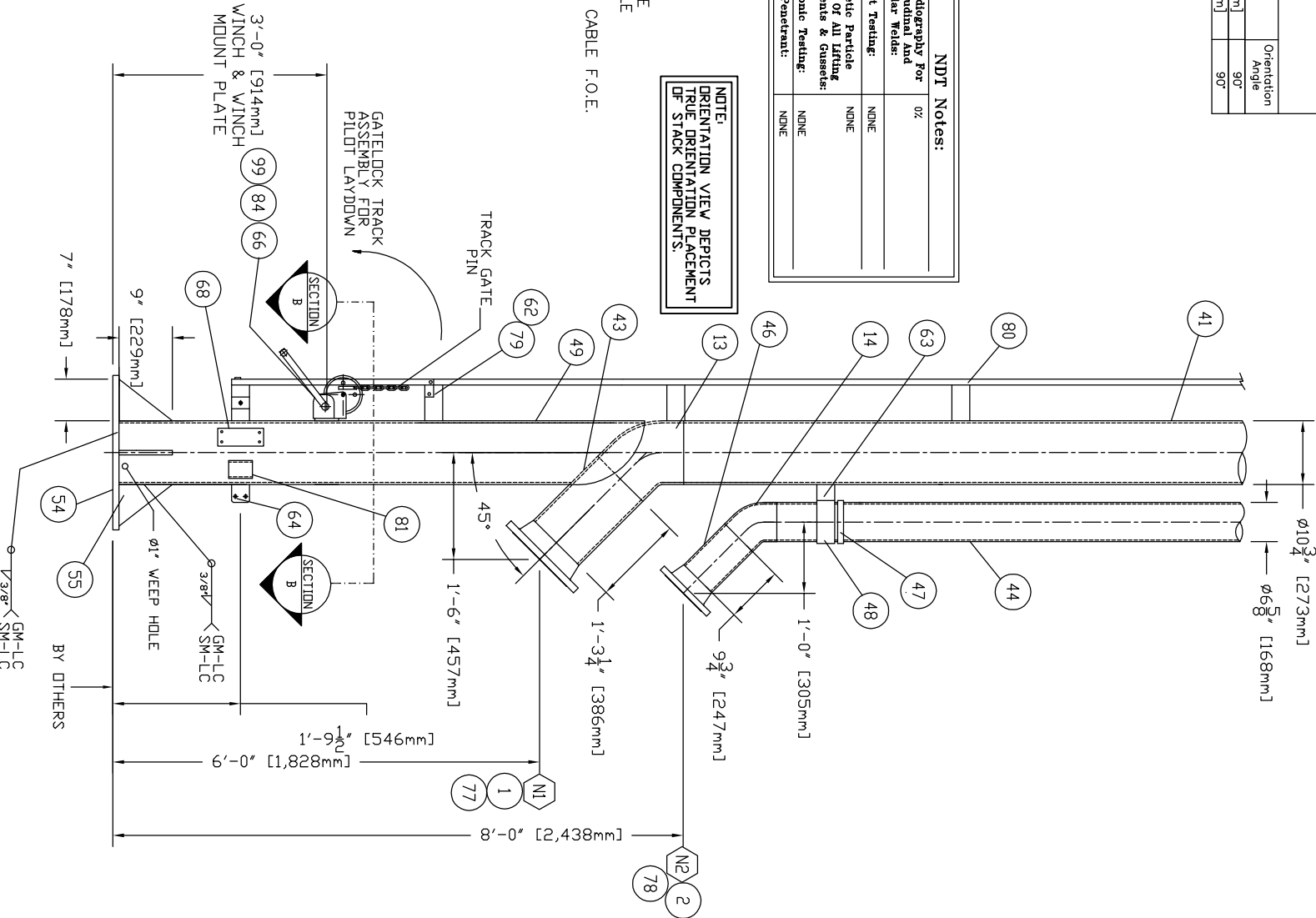
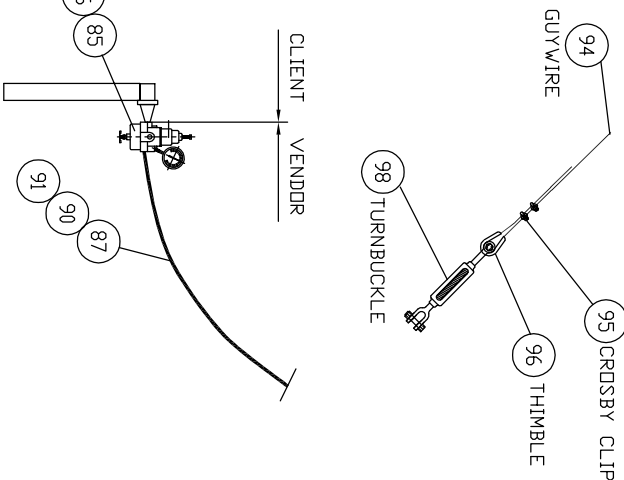


NDT Notes:	
% of Radiography Per Longitudinal And Circular Welds:	02
Impact Testing:	NONE
Magnetic Particle Testing Of All Lifting Attachments & Connects:	NONE
Ultra Sonic Testing:	NONE
Dye Penetrant:	NONE

**NOTE:**  
ORIENTATION VIEW DEPICTS  
TRUE ORIENTATION PLACEMENT  
OF STACK COMPONENTS.

## GUYWIRE ANCHOR CONNECTIONS

ONE - 7/8" x 18" J & J TURNBUCKLE  
ONE - 3/8" GALVANIZED HEAVY THIMBLE  
TWO - 3/8" CROSBY CLIPS  
ONE - 3/8" 6 x 26 GALVANIZED IRWC CABLE F.O.E.  
(TYP 3, SETS BOTTOM)



## PILOT & TIP

0			ISSUED FOR APPROVAL PURPOSES		KW	12	05	30		
Rev.			Description		By	Y	M	D		

Coating & Preparation:		Ignition System:	
1.) STACK EXTERIOR, SANDBLAST, SSPC-SP6 PRIMER: DEVCON CATHACDUT 302H, 2.5-4.0 mils DFT TOPCOAT: CLOVERDALE ARMOURSHIELD 2-3 mils DFT GLUSS BLACK		TORNAOD RETRACTABLE CONSTANT IGNITION FUEL GAS PILOT MODEL TSI #6	
General Notes:		Fabrication Tolerances *	
1.) MFRS PROVIDED ON REQUEST AND RECEIPT OF ORDER. 2.) FOUNDATION STANDARD FOR PLUMBERS TOLERANCE IS 1 INCH PER 100 FEET OF VERTICAL HEIGHT. 3.) BASE PLATE ANCHORS TO BE DOUBLE NUTTED. 4.) FOUNDATION TO BE DESIGNED BY A QUALIFIED ENGINEER.		<b>Fractional:</b> 00" to 024" ±1/8" Greater than 024" ±1/4"	
		<b>Decimal:</b> 00" to 024" ±1/8" Greater than 024" ±1/4"	
		<b>Angular:</b> All ±2°	
		*Unless otherwise stated	


Name of Plant:	ALBERTA
Lease:	-
Approx. Weight:	3,870 LBS.
Max. Horiz. Load At Base:	-LBS.
Max. Vert. Load At Base:	- LBS.
Net Overturning Moment:	- FT.-LBS.
Design Wind Pressure:	- kPa
Design Wind Velocity:	- mph
Gust Factor:	-
Weld Procedure:	#1323,2
APDECA Permit To Practice:	#P10806
CMB Registration Number:	TBRN01

Drawing Number:	Progress-12515-GA(1)
Drawn By:	KW
Checked By:	EW
Date Drawn:	30/05/12
Job Number:	12515
Quote Number:	Prog0512
Tag Number:	-
Design Code:	NBC 2010
Exposure Factor:	-
Anchor Diameter (Base):	Ø 1"
Corrosion Allowance:	-

<b>Title:</b>	ø10" X 60'-0" TALL GUYWIRE SUPPORTED FLARE STACK c/w ø6" L.P STACK RISER
<b>Customer:</b>	PROGRESS ENERGY RESOURCES
<b>P.O.#:</b>	-
<b>Salesperson:</b>	DAYNOD STELERT

Sheet 1 of 2

---



**TORNADO COMBUSTION  
TECHNOLOGIES INC.**

**1-888-882-3882**

Any Technical Data and the Design Disclosed Herein are the Exclusive Property of Tornado Technologies Inc. and/or Combined the Design and/or Technology of the Design Disclosed or Otherwise to Others without the Written Consent of Tornado Technologies Inc.