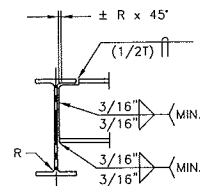
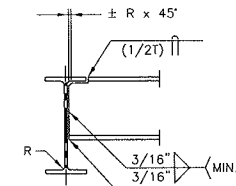
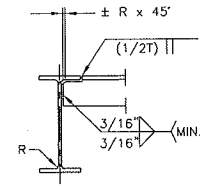
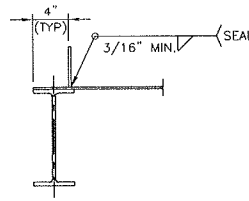
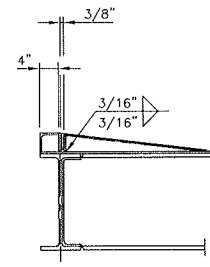
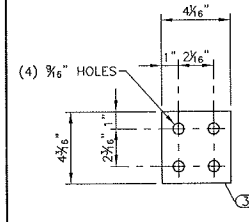
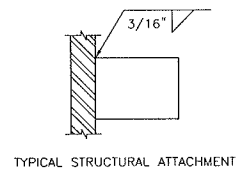
COPING DETAIL
MAIN MEMBERSCOPING DETAIL
BEAM TO BEAMCOPING DETAIL
CHANNEL TO BEAMCOPING DETAIL
ANGLE TO BEAM

CONTAINMENT LIP

DOOR THRESHOLD DETAIL
MINIMUM 40" LONG

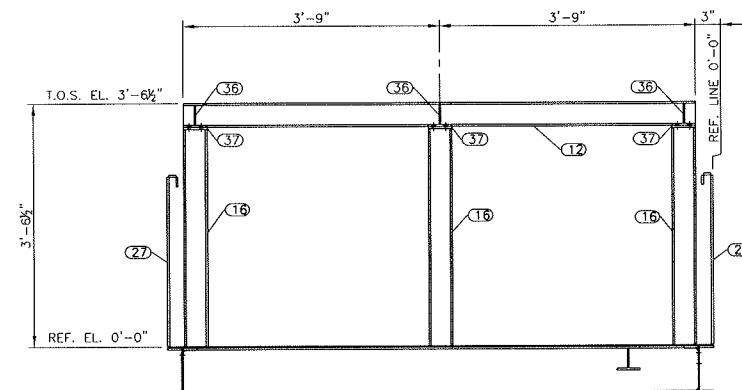
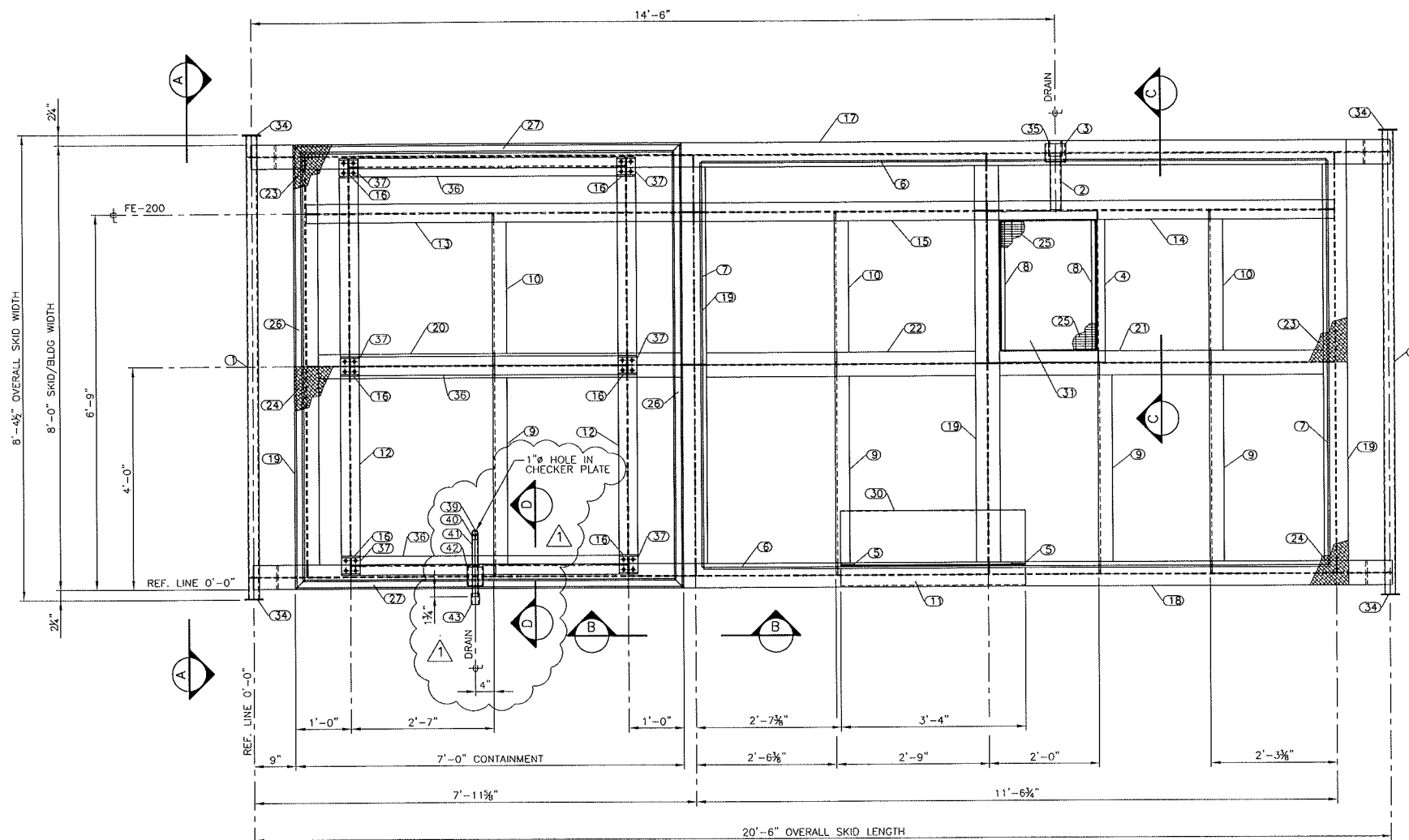
CONNECTION PLATE DETAIL



TYPICAL STRUCTURAL ATTACHMENT

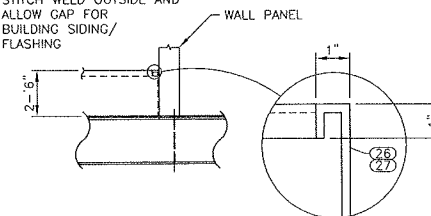
BILL OF MATERIALS

MARK	DESCRIPTION	LENGTH	COUNT	MATERIAL
1	2" SCH XH SMLS PIPE	8'-4"	2	SA-106-B
2	2" SCH XH SMLS PIPE	1'-0 1/4"	1	SA-106-B
3	4" SCH STD SMLS PIPE	4"	1	SA-106-B
4	C4 x 5.4#	2'-8 3/4"	1	SAG40.2144W
5	FB 2 1/2" x 3/8"	3"	2	SAG40.2144W
6	FB 3" x 3/8"	11'-3 1/4"	2	SAG40.2144W
7	FB 3" x 3/8"	7'-3 1/4"	2	SAG40.2144W
8	L 1 1/4" x 1 1/4" x 1/4"	2'-4 1/4"	2	SAG40.2144W
9	L 3" x 3" x 3/8"	3'-9 1/4"	4	SAG40.2144W
10	L 3" x 3" x 3/8"	2'-8 3/4"	3	SAG40.2144W
11	L 4" x 3" x 3/8"	3'-4"	1	SAG40.2144W
12	W4 x 13#	7'-6"	2	SAG40.2150W
13	W4 x 13#	6'-11 3/4"	1	SAG40.2150W
14	W4 x 13#	6'-3 1/4"	1	SAG40.2150W
15	W4 x 13#	5'-3 1/4"	1	SAG40.2150W
16	W4 x 13#	3'-1 15/16"	6	SAG40.2150W
17	W8 x 18#	20'-6"	1	SAG40.2150W
18	W8 x 18#	20'-6"	1	SAG40.2150W
19	W8 x 18#	7'-6 1/2"	4	SAG40.2150W
20	W8 x 18#	6'-11 3/4"	1	SAG40.2150W
21	W8 x 18#	6'-3 1/4"	1	SAG40.2150W
22	W8 x 18#	5'-3 1/4"	1	SAG40.2150W
23	CHECKER PLATE 4'-0" x 1/4"	19'-0"	1	SAG40.2144W
24	CHECKER PLATE 4'-0" x 1/4"	19'-0"	1	SAG40.2144W
25	1/4" x 3/16" SERR. GRATING x 1'-8 3/8"	2'-3 7/8"	1	SAG40.2144W
26	PLATE 2'-8" x 3/16" (SEE DETAIL)	7'-11 5/8"	2	SAG40.2144W
27	PLATE 2'-8" x 3/16" (SEE DETAIL)	6'-11 5/8"	2	SAG40.2144W
30	PLATE 1'-2 1/4" x 1/4"	3'-4"	1	SAG40.2144W
31	PLATE 1'-11 7/8" x 3/8"	2'-8 3/4"	1	SAG40.2144W
34	PLATE 4" x 1/4"	N/A	4	SAG40.2144W
35	2" CL. 3000 FULL CPLG	N/A	1	SA-105N
36	W4 x 13#	4'-11 3/4"	3	SAG40.2150W
37	PLATE 4 1/16" x 3/8" (SEE DETAIL)	4 3/8"	6	SAG40.2144W
38	1/2" CAPSCREW c/w (1) HEX NUT	1 3/4"	24	SEE NOTE #2
39	1" SCH STD SMLS PIPE	2 1/2"	1	SA-106-B
40	1" SCH STD 90° LR BW ELL	N/A	1	SA-234-WPB
41	1" SCH STD SMLS PIPE	1'-0 1/4"	1	SA-106-B
42	3" SCH STD SMLS PIPE	4"	1	SA-106-B
43	1" CL. 3000 FULL CPLG	N/A	1	SA-105N

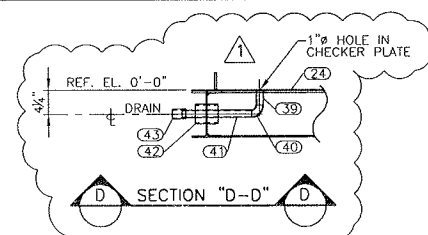


SECTION "A-A"

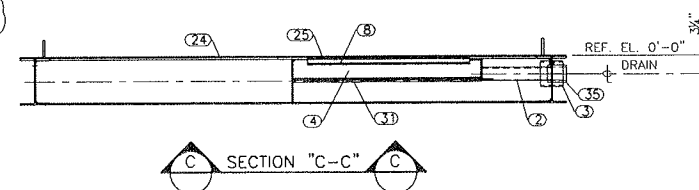
SHOP NOTE:
SEAL WELD REQUIRED ON
INSIDE OF ITEMS #26 & #27;
STITCH WELD OUTSIDE AND
ALLOW GAP FOR
BUILDING SIDING/
FLASHING



SECTION "B-B"



SECTION "D-D"



SECTION "C-C"

(1) SHOWN
(5) REQUIRED

NOTES

- ALL FABRICATION SHALL BE CARRIED OUT IN CWB APPROVED FABRICATION SHOPS AND MUST CONFORM TO CURRENT 2003 CSA W47 AND W59. ALL WELD MATERIAL SHALL BE CSA STD W48 SERIES APPROVED. FOR QUALITY OF WELD, REFER TO COMPANY CWB WELDING CERTIFICATION UNDER NUMBER 150-2/SUBCONTRACTOR
- ALL BOLTING TO BE ELECTRO GALVANIZED ASTM A325 AND ASTM A563DH MATERIAL.
- TOP OF CHECKER PLATE REFERENCE ELEVATION 0'-0".
- CHECKER PLATE SEAMS TO BE SEAL WELDED.
- CHECKER PLATE PERIMETER TO BE STITCH WELDED.
- CHECKER PLATE TO BE STITCH WELDED TO ALL SUPPORTS.
- STRUCTURAL SKID TO BE COMMERCIAL SANDBLASTED PER SSPC-SP6.
- SANDBLASTING SHALL NOT BE CONDUCTED ON SURFACES THAT ARE LESS THAN 3'F ABOVE DEWPOINT, OR WHEN THE RELATIVE HUMIDITY OF THE AIR IS GREATER THAN 80%.
- STRUCTURAL SKID TO RECEIVE (1) COAT VALSPAR ZINC PHOSPHATE PRIMER AND (2) COATS OF DARK GREY MOBIL F-15 (INDUSTRIAL GREY).
- SKID MUST BE ADEQUATELY SUPPORTED BY THE CUSTOMER IN THE FIELD.
- TOTAL APPROXIMATE SKID WEIGHT: 6650 lbs (3016 kg).

CUSTOMER REFERENCE 7-783-KKK-1041

CUSTOMER: PETRO CANADA OIL AND GAS

JOB NO. B7458-10

PROJECT: 4" SOUR METERING PACKAG - LEFT HAND ENTRY
B.C. STOCKTITLE: SKID DETAIL
8'-0" x 20'-6" LG w/ W8 x 18# MAIN MEMBERS

DRAWN: JC CHECKED: [Signature] SCALE: 3/4"=1'-0" DATE: 07/11/16 DWG NO: B7458-00-DR-10-001 SHIT TFL 1

Presson
ENERFLEX

NO.	REVISION	BY	CHKD.	DATE
1	AS BUILT	JC	[Signature]	08/05/28
0	ISSUED FOR CONSTRUCTION	AEB		07/12/11
A	ISSUED FOR APPROVAL	AEB		07/11/30

May 28