

THE CONTENTS OF THIS DRAWING ARE CONFIDENTIAL AND MAY NOT BE REPRODUCED WITHOUT WRITTEN PERMISSION

PROPERTY OF CAPE MANUFACTURING LTD.

V-1100 120" FLARE KNOCKOUT DRUM

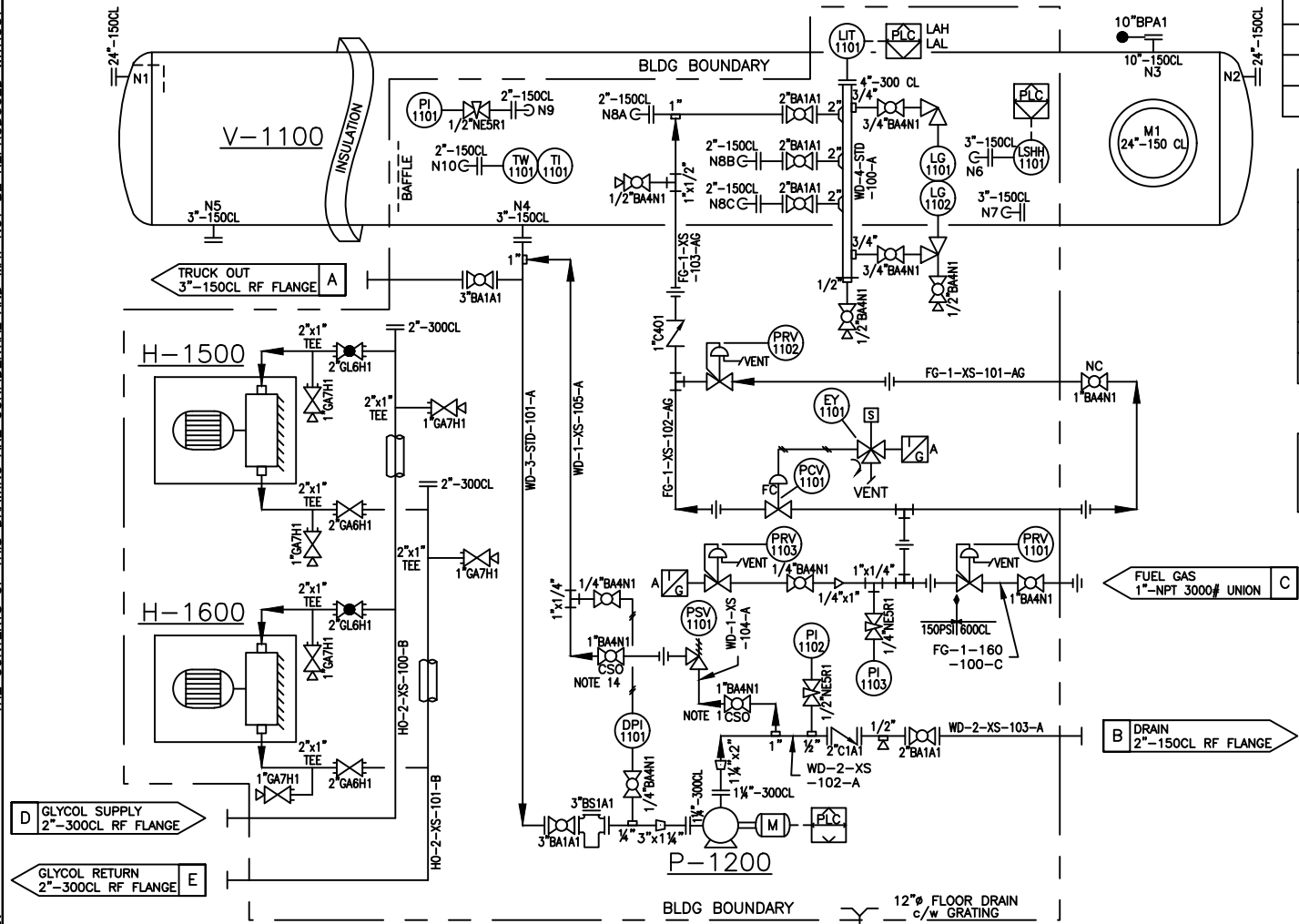
120" ID x 40'-0" s/s
MAWP: 75 PSIG
-20°F/100°F
1/16" CORROSION ALLOWANCE
RT-2

P-1200 BOOST PUMP

MAKE: GRUNDFOS
MODEL: CRN 3-15
363 PSIG @ 194°F
3HP, 3450 RPM, 230/460V/3PH/60Hz

BH-1500/1600 HOT OIL HEATERS

MAKE: HAZLOC
MODEL: HUH2-16-C-3-115160-E
16"Ø FAN, 2"-NPT CONNECTIONS
¼HP 115V/1PH/60Hz MOTOR



NOTES:

- QUANTITIES IN B.O.M. ARE FOR ONE (1) UNIT.
- ALL PIPING TO BE IN ACCORDANCE WITH ASME B31.3, 2014 EDITION.
- WELDED PIPING TO BE: SA-106B SMLS;
 - SPEC A - 2" & UNDER: SCH. XS
 - 3" & UP: SCH. STD
- THREADED PIPING TO BE: SA-106B SMLS;
 - SPEC A/AG - ½" THRU 2": SCH. XS
- WELDED FITTINGS TO BE: SA-234-WPB c/w SA-105N FLANGES.
- FORGED STEEL FITTINGS TO BE: SA-105N CL3000 (min.) RATING.
- TUBING DETAILS;
 - INSTRUMENT: ¾"(0.035"WT) 316SS TUBING
 - PROCESS: ½"(0.049"WT) 316SS TUBING
 - c/w HY-LOK 316SS FITTINGS & FERRULES.
- REMOVE ALL FLOATS/DISPLACERS FROM ALL LEVEL CONTROLLERS/SWITCHES.
- PROTECT ALL OPENINGS FOR SHIPMENT.
- VENT ALL INSTRUMENTS OFF SKID (o/s).
- PIPING & INSTRUMENTS SECURELY SUPPORTED.
- ELECTRICAL SUPPLIES & EQUIPMENT INSTALLED BY OTHERS.
- 10% X-RAY OF ALL WELDED PIPING.

END CONNECTION:

FLANGED RF= 1
FLANGED RTJ=2
BUTTWELDED= 3
THREADED F-F= 4
THREADED M-F= 5
SOCKETWELD= 6
SW/THRD= 7
TUBING= 8

VALVE LEGEND

VALVE TYPE:
BALL(R.P.)=BA
BALL (F.P.)=BAF
NEEDLE=NE
FULL BODY CHECK=C
GATE=GA
GLOBE=GL
PISTON CHECK=CP
Y-STRAINER=Y
BASKET STRAINER=BS

ANSI CLASS:

CL150=A
CL300=B
CL400=C
CL600=D
CL900=E
CL1500=F
CL2500=G

VALVE SERVICE:

NORMAL TEMP, SWEET PROCESS=1
NORMAL TEMP, SOUR PROCESS=1S
LOW TEMP, SWEET PROCESS=2
LOW TEMP, SOUR PROCESS=2S

THREADED/SOCKET WELDED CLASS:

API 602 WOG
CLASS 800=H 250 WOG=L
CLASS 1500=J 1000 WOG=M
CLASS 2500=K 2000 WOG=N
2160 WOG=O
3000 WOG=P
3600 WOG=Q
6000 WOG=R
10000 WOG=S
TUBING RATING=T

VALVE LIST

TAG	QTY.	MAKE	DESCRIPTION
¼"BA4N1	3	MAS	¼"-NPT 2000 WOG RP BALL VALVE
½"BA4N1	3	MAS	½"-NPT 2000 WOG RP BALL VALVE
3/4"BA4N1	2	MAS	3/4"-NPT 2000 WOG RP BALL VALVE
1"BA4N1	4	MAS	1"-NPT 2000 WOG RP BALL VALVE
2"BA1A1	4	FUSION	2"-150CL RF, RP BALL VALVE
3"BA1A1	2	FUSION	3"-150CL RF, RP BALL VALVE
1"C401	1	WHEATLEY	1"-NPT 2160 WOG SWING CHECK VALVE
2"C1A1	1	WHEATLEY	2"-150CL RF, SWING CHECK VALVE
1"GA7H1	6	OMB	1"-SWxNPT, 900CL GATE VALVE
2"GA6H1	2	OMB	2"-SW 900CL, GATE VALVE
2"GL6H1	2	NAVCO	2"-SW 900CL, GLOBE VALVE
¼"NE5R1	1	WGI	¼"-NPT MxF 6000 WOG NEEDLE VALVE, CS
½"NE5R1	2	WGI	½"-NPT MxF 6000 WOG NEEDLE VALVE, CS
3"BS1A1	1	ALTA	3"-150CL RF, BFS150 ALTA BASKET STRAINER
10"BPA1	3	BURST PLATE	10"-150CL, TYPE B, BURST PRESS.: 75PSIG c/w FA-7R HOLDER

TAPPED & BLIND FLANGES

QTY.	DESCRIPTION
1	2"-150 CL RF BLIND FLANGE TAPPED ½"-NPT, SA-105N
1	2"-150 CL RF BLIND FLANGE TAPPED ¾"-NPT, SA-105N
1	3"-150 CL RF HUB BLIND FLANGE TAPPED 2"-NPT, SA-105N
2	2"-300 CL RF BLIND FLANGE, SA-105N
2	3"-150 CL RF BLIND FLANGE, SA-105N

TW-1101	1	MASTER TEMP	TEMPERATURE INDICATOR 3" FACE x ½" x 9" STEM, -40/160°F c/w ½"-FNPT x ¾"-MNPT x 9" 316 SST THERMOWELL
---------	---	-------------	---

NOTE 14:

ISOLATION VALVES ON ALL AND ANY PSV ARE THE REQUEST OF THE OWNER AND THEY HAVE APPROVED ADMINISTRATIVE AND OPERATION CONTROL PROCEDURES FOR THESE VALVES. THESE VALVES MUST COME COMPLETE WITH MECHANICAL LOCKS ON THEM.
COMPANY: _____

SIGNATURE: _____

SHIP LOOSE ITEMS

- 1- TUBES OF CAULKING
- 1- PARTS MANUAL
- 2- BURST PLATES

BILL OF MATERIALS

TAG	QTY.	MAKE	DESCRIPTION
DPI-1101	1	WGI OR EQUAL	PRESSURE GAUGE, LIQUID FILLED, SS 2½" FACE x ¼"-NPT, 0-10 PSIG
EF-1101	1	ASCO	3-WAY SOLENOID, MODEL: EF8320G202-24VDC
LG-1101/02	2	PENBERTHY	2RM8-NE LEVEL GAUGE c/w 330J GAUGE VALVES
LIT-1101	1	ROSEMOUNT	5301 GUIDED WAVE RADAR LEVEL TRANSMITTER MODEL:5301HA1S1B5AE00506CAE6B3 580 PSIG @ 302°F 66" FLEXIBLE SINGLE LEAD PROBE 4"-150CL PROCESS CONNECTIONS w/ DIGITAL DISPLAY
LSHH-1101	1	KIMRAY	HIGH LEVEL SHUTDOWN, 2"-NPT, ELECTRIC MODEL: CEC2 SS FLOAT, SS BODY, SNAP ACTING, MANUAL OVERRIDE
PCV-1101	1	FISHER	D2 PRESSURE CONTROL VALVE, 1"-NPT, FC SWEET SERVICE, ½" FLO-PRO TRIM
PRV-1101	1	FISHER	PRESSURE REGULATOR, 627, 2000 PSIG MAWP 1"-NPT, 70-150 PSIG RANGE, 1/8" ORIFICE, NYLON DISC
PRV-1102	1	FISHER	PRESSURE REGULATOR, 627, 2000 PSIG MAWP 1"-NPT, 5-20 PSIG RANGE, 1/8" ORIFICE, NYLON DISC
PRV-1103	1	FISHER	PRESSURE REGULATOR 67CFR-362SC ¼"-NPT, 0-35 PSIG RANGE
PI-1101/02	2	WGI OR EQUAL	PRESSURE GAUGE, LIQUID FILLED, SS 4" FACE x ½"-NPT, 0-100 PSIG
PI-1103	1	WGI OR EQUAL	PRESSURE GAUGE, LIQUID FILLED, SS 2½" FACE x ¼"-NPT, 0-200 PSIG
PSV-1101	1	TAYLOR	△ PRESSURE SAFETY VALVE, MODEL: 8200 1"-NPT, WCB BODY, SET@190 PSIG, "D" ORIFICE

SKID & BUILDING DESCRIPTION

TAG	QTY.	DESCRIPTION
BUILDING		9'-6" WIDE x 35'-0" LONG UNDERBELLY HUTCH, FOAM PANEL 4'-6" WIDE x 8'-0" LONG x 9'-0" LOW EAVE, FOAM PANEL
INSULATION		R12 IN ROOF & WALLS
EXTERIOR		24 GA GALVALUME
DOORS	2	36" x 36" REMOVABLE PANELS
	1	3' x 7' FOAM PANEL c/w IGW WINDOW
HARDWARE		CHECK CHAIN, BARREL BOLT, & WEATHER STRIPPING
VENT	3	12" x 12" ADJUSTABLE LOUVRE & SCREEN
OPTIONS		ICE RAKES, EAVES TROUGH & DOWNSPOUTS
SKID		13'-6" WIDE x 37'-2" LONG
FLOOR		3/16" CHECKER PLATE, 2" CONTAINMENT, 12"Ø FLOOR DRAIN
INSULATION		2" THK MIN POLYURETHANE INSULATION UNDER BLDG 1½" FOAM PANEL FLOOR ON HUTCH
SKID PREP & PAINT		SSPC-SP3, 1 COAT CLOVERDALE PRIMER, 1 COAT CLOVERDALE GREY ENAMEL
PIPE EXTERNAL		SSPC-SP3, 1 COAT CLOVERDALE PRIMER, 1 COAT CLOVERDALE GREY ENAMEL
PIPE INSULATED		HEATER SUPPLY & RETURN LINES TO BE INSULATED
VESSEL EXTERIOR	IN BLDG OUT BLDG	SSPC-SP3, 1 COAT CLOVERDALE PRIMER, 1 COAT CLOVERDALE GREY ENAMEL SSPC-SP3, 1 COAT CLOVERDALE PRIMER, 1 1/2" FIBERGLASS INSULATION & 0.020 CORRUGATED EMBOSSED ALUMINUM CLADDING
VESSEL INTERNAL		NONE



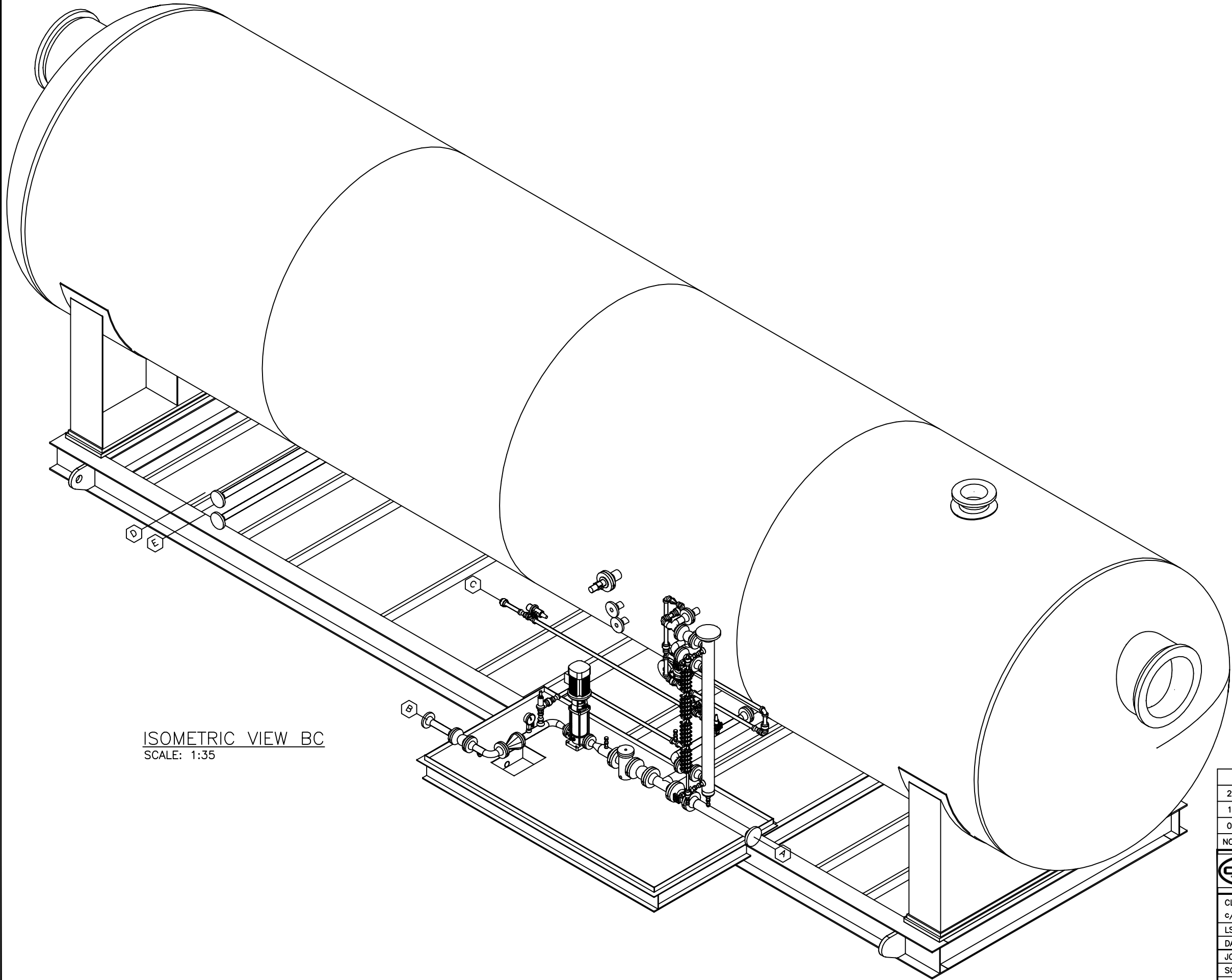
CAPE MANUFACTURING LTD.
PO BOX# 216 HALKIRK, AB T0C 1M0
TELEPHONE: (403) 884-2442





CLIENT: c/o:	DATE: 16-10-27	120" FLARE KNOCKOUT
LSD:	JOB NO.: CML-160563	120" SEPARATOR, 40'-0" s/s
SCALE: N.T.S.	DRAWN BY: KG	75 PSIG @ -20°F / 100°F
CHECKED BY:	DWG NO.: CML-160563PID	REV. 2
SHEET 1 OF 1		

THE CONTENTS OF THIS DRAWING ARE CONFIDENTIAL AND MAY NOT BE REPRODUCED WITHOUT WRITTEN PERMISSION

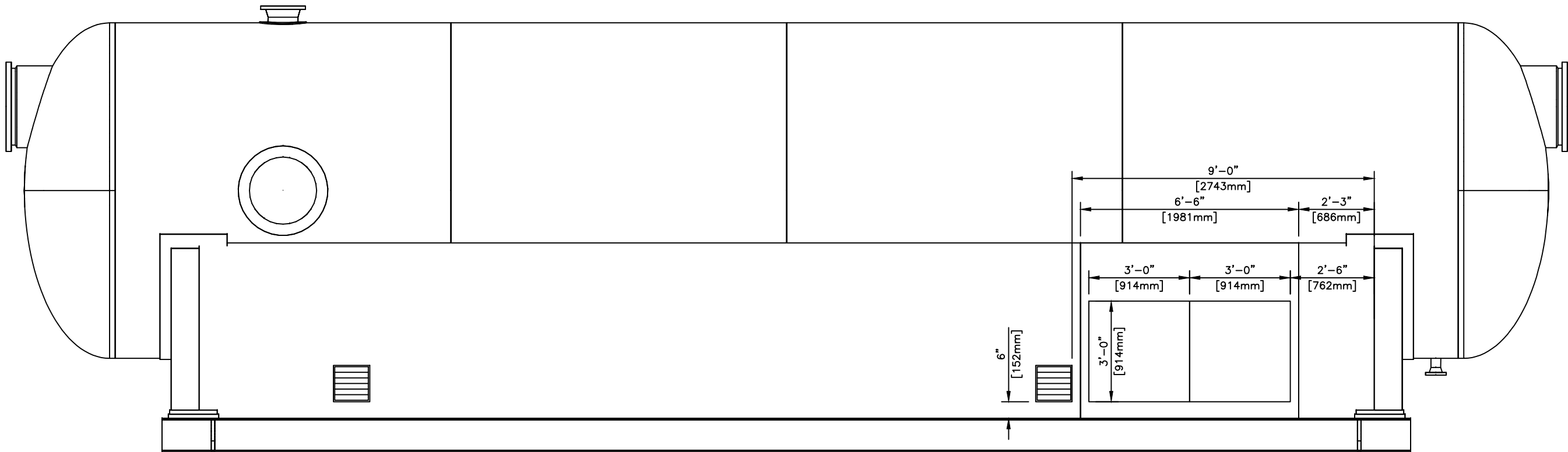
PROPERTY OF CAPE MANUFACTURING LTD.



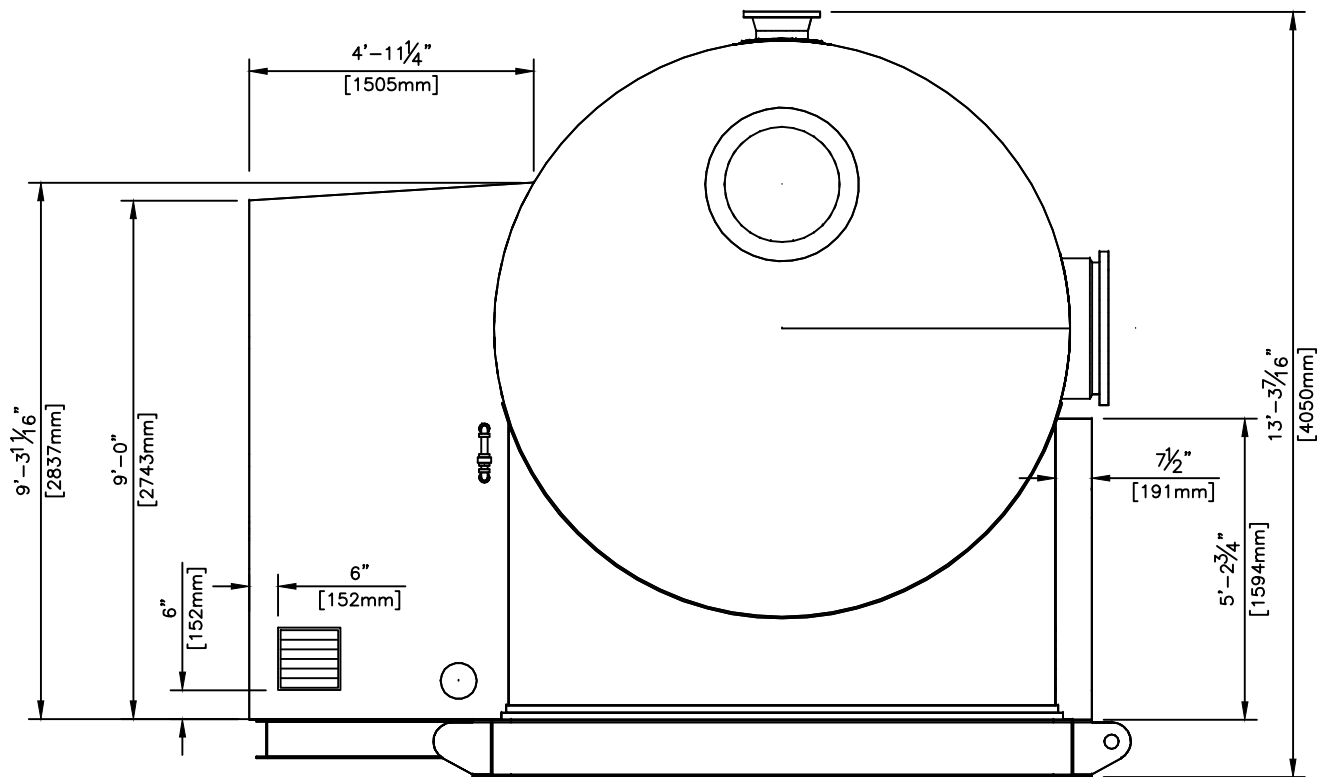
ISOMETRIC VIEW BC
SCALE: 1:35

2	17-03-30	AS BUILT	KG		
1	16-12-23	REVISED PUMP	KG	JB	
0	16-12-09	ISSUED FOR CONSTRUCTION	KG	DH	
NO.	DATE	REVISION	BY	APP	
<div><div></div><div>CAPE MANUFACTURING LTD. PO BOX# 216 HALKIRK, AB T0C 1M0 TELEPHONE: (403) 884-2442</div><div></div></div>					
CLIENT: c/o:					
LSD:		120" FLARE KNOCKOUT 120" SEPARATOR, 40'-0" s/s 75 PSIG @ -20°F / 100°F			
DATE:		16-11-22			
JOB NO.:		CML-160563			
SCALE:		SEE DWG.			
DRAWN BY:		KG			
CHECKED BY:		DWG NO.:		REV.	
SHEET 3 OF 3		CML-160563ISO		2	



PROPERTY OF CAPE MANUFACTURING LTD. THE CONTENTS OF THIS DRAWING ARE CONFIDENTIAL AND MAY NOT BE REPRODUCED WITHOUT WRITTEN PERMISSION



ELEVATION VIEW A
SCALE: 1:40

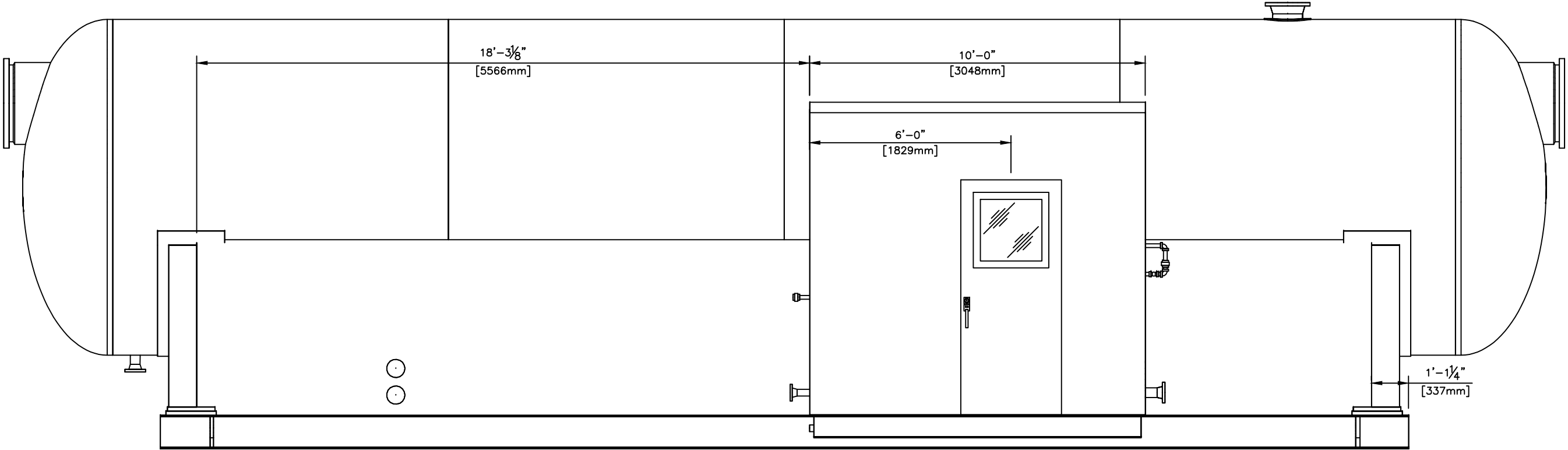


ELEVATION VIEW B
SCALE: 1:40

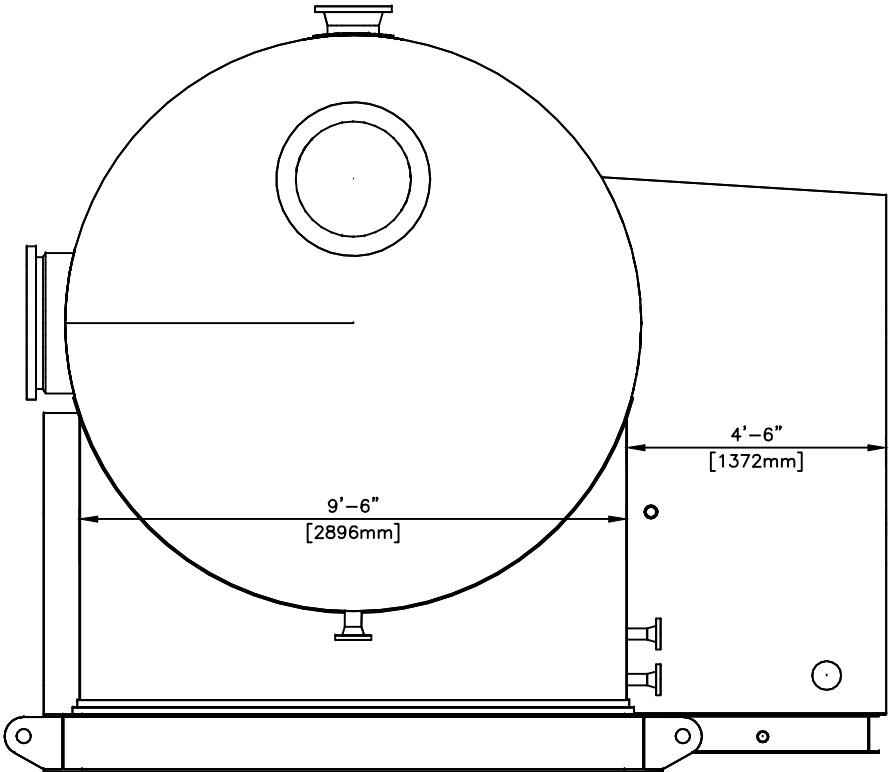
2	17-03-30	AS BUILT	KG	
1	17-01-10	ADDED EXTENSION	KG	JG
0	16-12-09	ISSUED FOR CONSTRUCTION	KG	DH
NO.	DATE	REVISION	BY	APP
<div><div>CAPE MANUFACTURING LTD. PO BOX# 216 HALKIRK, AB T0C 1M0 TELEPHONE: (403) 884-2442</div><div></div></div>				
CLIENT:				
c/o:				
LSD:		120" FLARE KNOCKOUT		
DATE:		16-11-22	120" SEPARATOR, 40'-0" s/s	
JOB NO.:		CML-160563	75 PSIG @ -20°F / 100°F	
SCALE:		SEE DWG.		
DRAWN BY:		KG		
CHECKED BY:				
SHEET 1 OF 2		DWG NO.:	CML-160563BLDG1	REV. 2

THE CONTENTS OF THIS DRAWING ARE CONFIDENTIAL AND MAY NOT BE REPRODUCED WITHOUT WRITTEN PERMISSION



PROPERTY OF CAPE MANUFACTURING LTD.



ELEVATION VIEW C
SCALE: 1:40



ELEVATION VIEW D
SCALE: 1:40

2	17-03-30	AS BUILT	KG	
1	16-12-23	REVISED PUMP	KG	JB
0	16-12-09	ISSUED FOR CONSTRUCTION	KG	DH
NO.	DATE	REVISION	BY	APP
<div><div>CAPE MANUFACTURING LTD. PO BOX# 216 HALKIRK, AB T0C 1M0 TELEPHONE: (403) 884-2442</div><div></div></div>				
CLIENT: c/o:				
LSD:		120" FLARE KNOCKOUT		
DATE:		16-11-22	120" SEPARATOR, 40'-0" s/s	
JOB NO.:		CML-160563	75 PSIG @ -20°F / 100°F	
SCALE:		SEE DWG.		
DRAWN BY:		KG		
CHECKED BY:			DWG NO.:	REV.
SHEET 2 OF 2			CML-160563BLDG2	2