



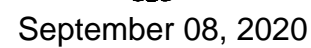
electrical specifications

equipment list

skid legend

Beam Size	W/ 12" @ 26 lb/ft.
# of Beams	Three (3)
End Members	7'0" x 97" Long
Cross Members	5 1/2"0" x 42 1/2" Long
Bumper Posts	4 - 7'0" x 48" High
Painting	1 Coat Black
Checker Plate	3/16" Steel
Front End	42"W x 92"L
Back End	39"W x 92"L
Boiling	16" / 32" o.c. (See Floor Plan)
"Z" Clamps	6 - 5/16" x 10"H

Copyrighted Material: No Reproduction of any kind of this document and attachments
hereto unless with the written consent from Alta-Fab Structures Ltd.
©2005 Alta-Fab Structures Ltd.



Design Loads

Design Loads

Floor Live Load: 2.4 kPa

Floor Live Load: 2.4 kPa

revisions

Rev.	Date	Description	By	App
	Metal Angle)			
	Le-Out Arbonite Top			

door schedule

window schedule

floor

Metal

ALTA FAD

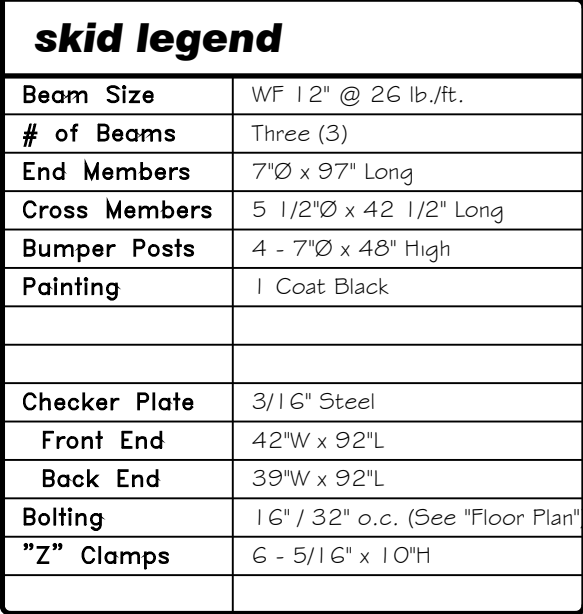
[illegible]

Style Number	#148936 Tannery	Wall	Finish	Material
--------------	-----------------	------	--------	----------

Wall	Finish	Material	LPG Enclosure	Royal Blue	26 Ga.
------	--------	----------	---------------	------------	--------

	Plastic Laminate	0
--	------------------	---

Drawn: K.C.	Checked:	Date: March 15, 2005
-------------	----------	----------------------

[illegible]

September 08, 2020

Copyrighted Material: No Reproduction of any kind of this document and attachments
hereto unless with the written consent from Alta-Fab Structures Ltd.
©2005 Alta-Fab Structures Ltd.

[illegible]

ALTA-FAB
structures ltd.
the Ultimate in transportable buildings ...

504 - 13th Avenue, Nisku
Alberta, Canada
Telephone: (780) 955-7733
Fax: (780) 955-7851
Toll Free: 1-800-252-7990

This Drawing is the Sole Property of Alta-Fab Structures Ltd. (Nisku, Alberta, Canada) and is loaned subject to return upon demand. This Drawing is to be only used for the intended project, and it is not to be reproduced or used in whole or in part for manufacturing purposes or otherwise without written consent or used for any purpose directly or indirectly detrimental to our interest.

Client:	-
---------	---

Engineering Firm:	N/A
-------------------	-----

Site:	N/A
-------	-----

Legal Site Description:	NA
Model:	

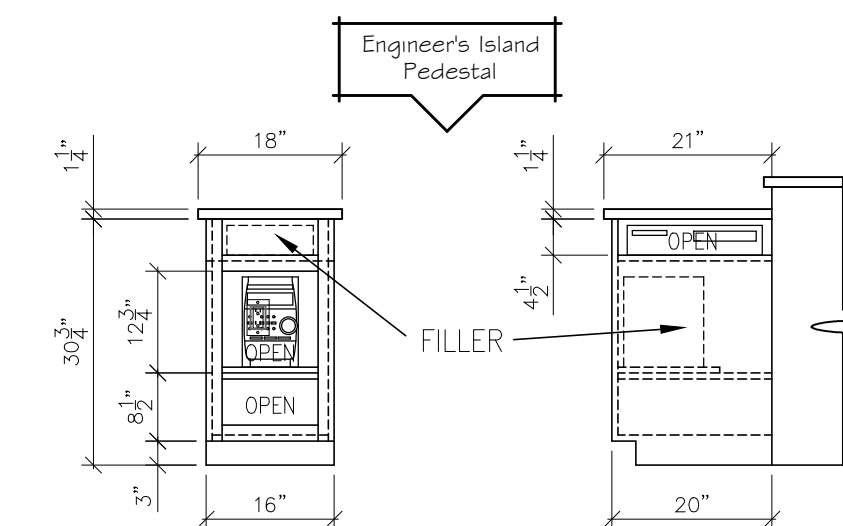
11'-9" x 38' (skid) Wellsite

Drawn: K.C.	Checked:	Date: March 15, 2005
-------------	----------	----------------------

Scale: 1/4" = 1'-0"	Approved:	CAD: 051238-5-5126
---------------------	-----------	--------------------

AFS Serial Number: 051228 G E 120 W/G Department: 2

051230-5-5125-W5	/ 3
------------------	-----



Technical drawing of a mobile office unit with various equipment and structural details labeled:

- Travel Restraint Bracket "A"
- Travel Restraint Center Pass-Thru Bracket
- Antenna Mounting Bracket (ITEM # 125)
- Recessed 70 Watt HPIS c/w Photocell
- Antenna Mounting Bracket (ITEM # 125)
- Travel Restraint Bracket "B"
- Baranway # 000
- Client Unit (Center)
- BBQ Enclosure
- Exterior Slide-Out
- Job Number
- # 0000
- 1 1/2" Filler
- 1500

Technical drawing of the back of a dryer, showing dimensions and component labels. The drawing includes the following labels and dimensions:

- Travel Restraint Bracket "B"
- Electrical Cord Guide
- Co-Axial Cable Box
- Satellite Mounting Bracket
- Royal Blue Metal Upper Fascia
- Black Metal Upper Trim
- Bone White Split Metal Cladding
- Black Metal Mid-Band
- Royal Blue Metal Starter Strip
- Electrical Cord
- Load Release Bolt
- 15"
- 6"
- 32"
- 72"
- Dryer Vent
- 4000-0008
- EPFB

Side elevation drawing of the mobile office unit. The drawing shows the following features and dimensions:

- Washroom Exhaust Fan:** Located on the left side of the unit.
- LPG Sealed Combustion Water Heater Exhaust:** Located on the left side of the unit.
- Radio Antenna:** Located on the roof of the unit.
- Furnace Fresh-Air Vent:** Located on the left side of the unit.
- Engineer's Kitchen Fume Hood Vent:** Located on the right side of the unit.
- Removable Plumbing Access Panel:** Located on the right side of the unit.
- Dimensions:**
 - 20'-0" (Overall length)
 - 8'-0" (Overall height)
 - 4'-0" (Height of the upper section)
 - 4'-0" (Height of the lower section)

Technical drawing of a mobile office unit, showing various components and labels:

- Travel Restraint Bracket "A"
- Client Logo (Centered)
- Derailway
- Exterior Incandescent Light Fixture
- Client Unit Number (Centered)
- Load This End Stop
- 1977
- Gas Line
- Unit

A circular professional engineer seal for the Province of British Columbia. The outer ring contains the text "PROFESSIONAL ENGINEER". Inside the ring, it says "PROVINCE OF" at the top, "M. OLESIW" in the center, "#45805" below the name, and "BRITISH COLUMBIA" at the bottom. A handwritten signature is written across the seal.

Copyrighted Material: No Reproduction of any kind of this document and attachments hereto unless with the written consent from Alta-Fab Structures Ltd.
©2004 Alta-Fab Structures Ltd.

✓